



Pickleball At El Cerrito Park Options Update

Donna Finch

Community Services Director

The Ask

That the City Council provide direction on its preferred option for CIP FC-2026-05 (Pickleball Facility at El Cerrito Park)



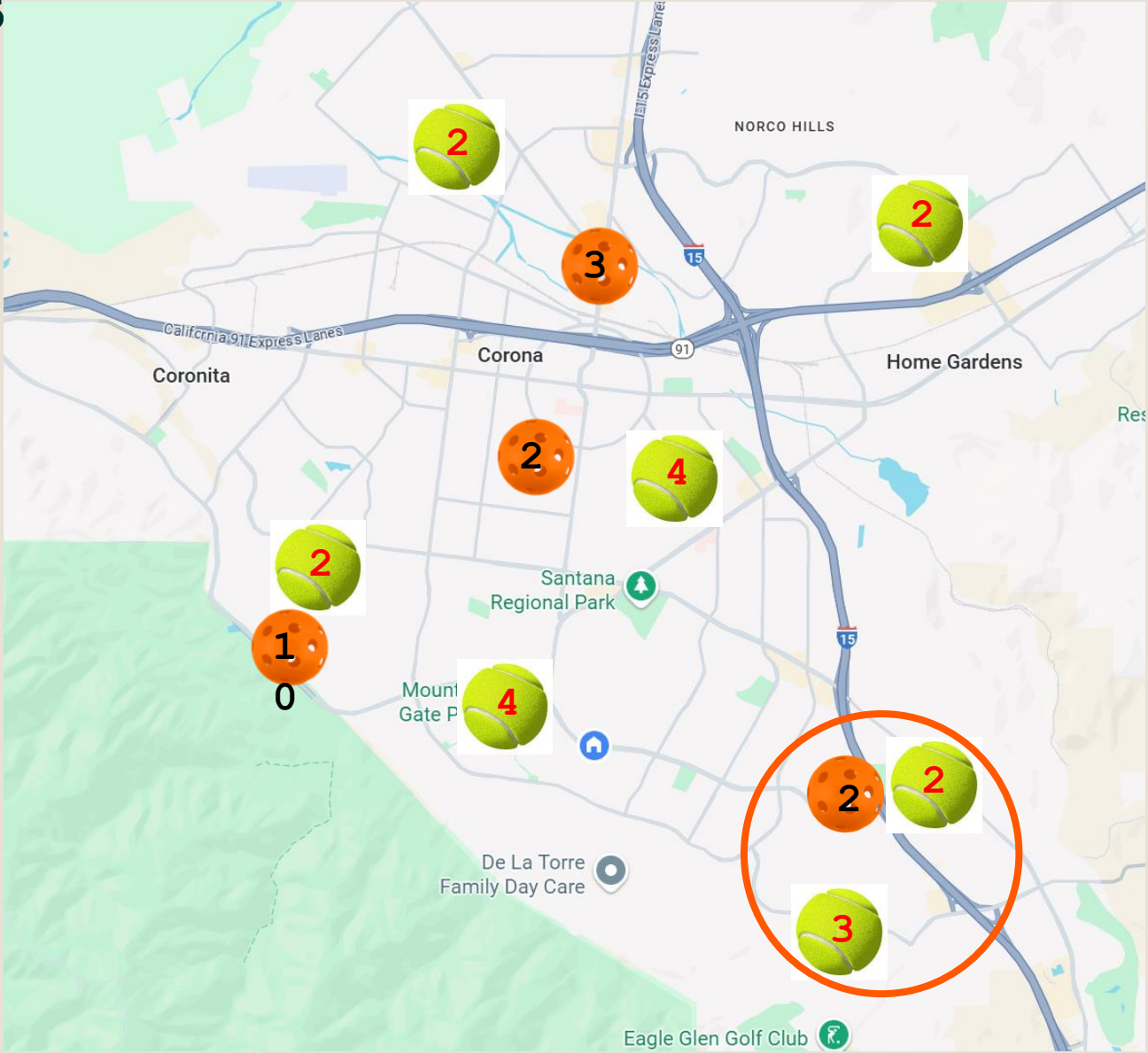


Background

- Demand growing for pickleball – ranked fastest growing sport in U.S. (46% 2023-2024, SFIA) ↑
- Pickleball courts identified as one of the top four outdoor features by residents in the Parks & Recreation Master Plan (PRMP)
- **PRMP calls for 23 pickleball courts** to meet level of service guidelines (1/7,300 residents)
 - **Currently 17 total pickleball** courts - 12 dedicated and 5 multi-use
 - Pickleball only: Border Park (10) and Husted Park (2)
 - Multi-use w/pickleball: Circle City Center (3) and El Cerrito Park (2)
 - **Leaves 6 more needed to reach 23**

Background – Tennis Courts

- Demand for tennis also growing (8% 2023-2024, USPTA)
- **PRMP calls for 18~ tennis courts** to meet service level guidelines (1/8,207 residents)
- **Corona has 19 tennis courts** located at 7 parks, achieving our desired service level.
 - El Cerrito (2), Eagle Glen (3), Mountain Gate (4), Kellogg (4), Mangular (2), Promenade (2), Auburndale (2)
 - 3 courts at Eagle Glen Park located 1.8 miles from proposed project site (El Cerrito Park)



Background

Proposed Pickleball Courts at El Cerrito Park

- New pickleball courts proposed at El Cerrito Park in FY2025-26 CIP Budget
 - Project involved **replacing 2 tennis courts** with pickleball courts & building **4 new courts**
 - Approximately \$1.1 million cost
- June 4, 2025 – City Council voted to pause project during budget adoption
- July 2, 2025 – Councilmember Richins asked for a reconsideration of the project
- August 6, 2025 – Project brought back to City Council for reconsideration

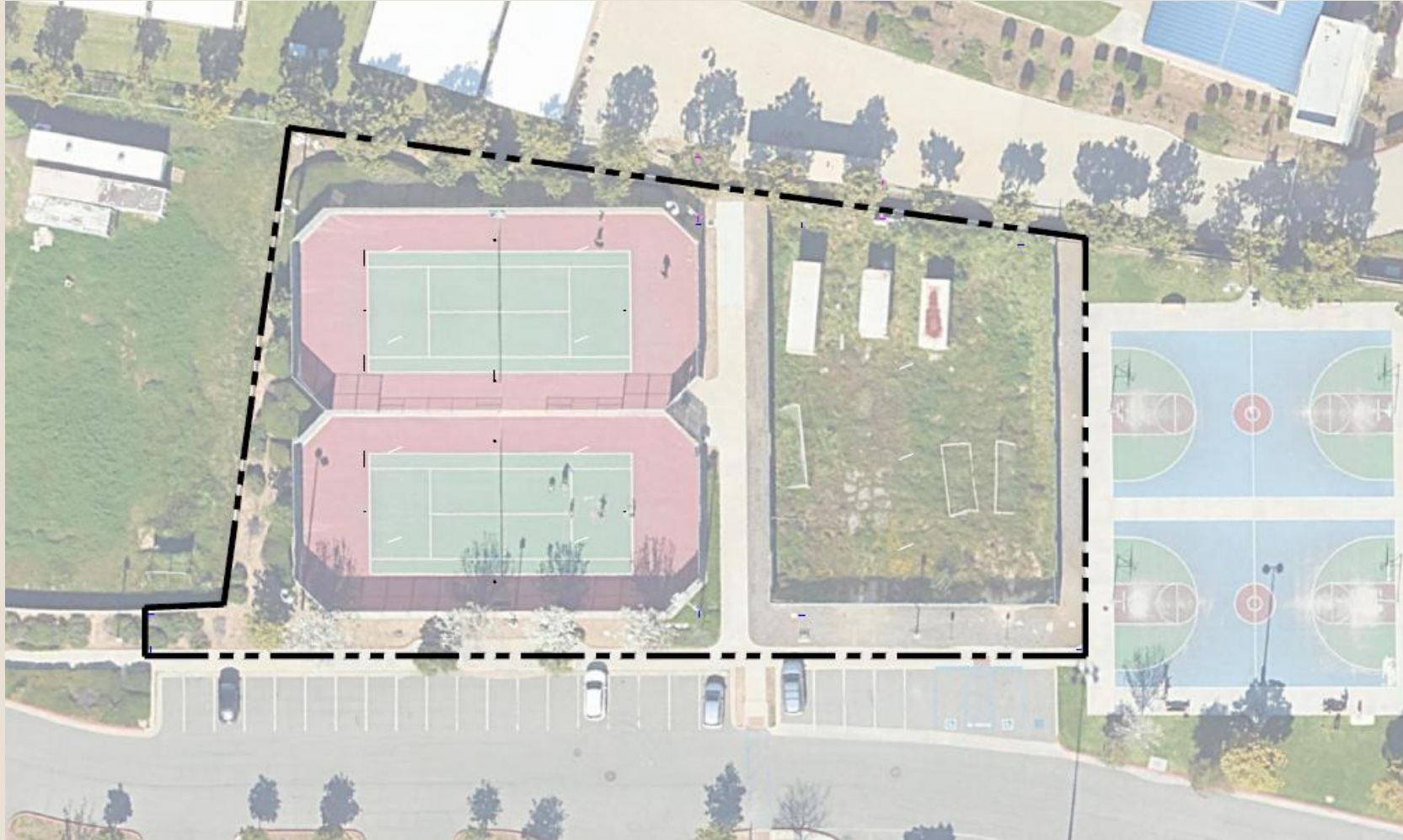


Original Alternatives

Presented August 6, 2025

Alternative Option 1

No Change to El Cerrito Park

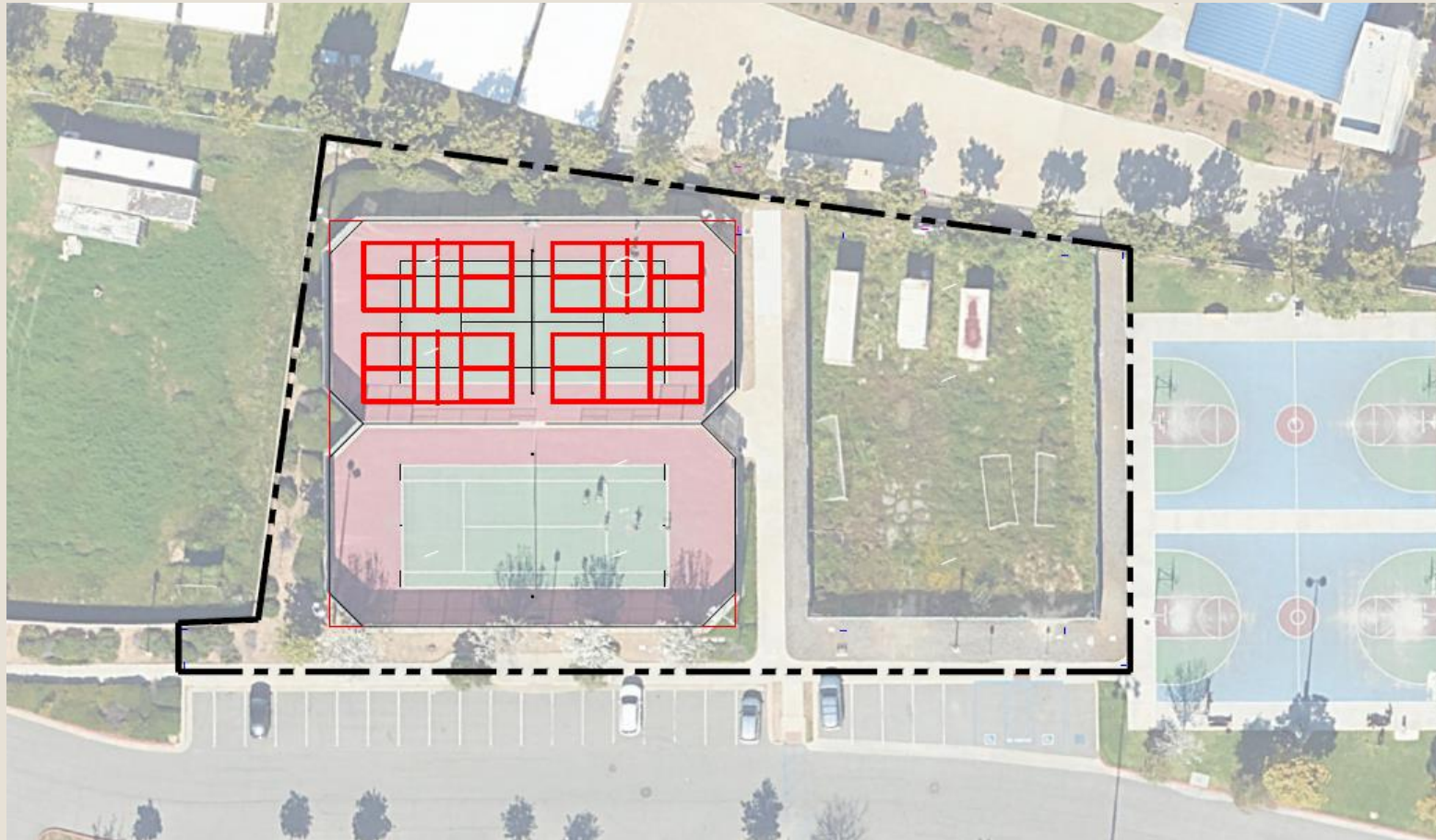


Alternative Option 2a

Convert only 1 tennis court at El Cerrito Park to pickleball courts

Net Pickleball Courts (+4)

Net Tennis Courts (-1)



Alternative Option 2b

Convert both tennis courts at El Cerrito Park to pickleball courts

Net Pickleball Courts (+8)

Net Tennis Courts (-2)

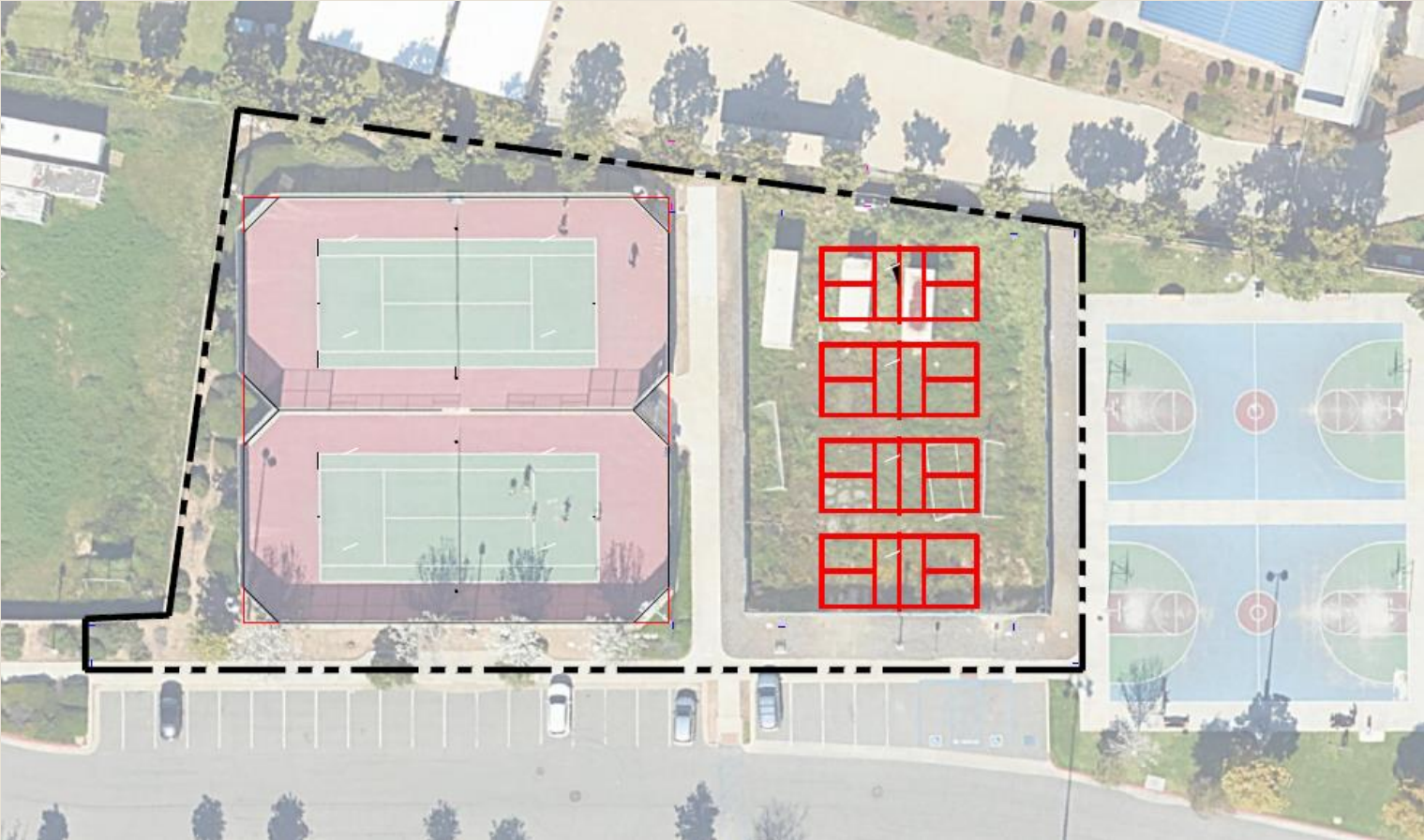


Alternative Option 3

Convert vacant parcel only at El Cerrito Park to pickleball courts

Net Pickleball Courts (+4)

Net Tennis Courts (0)



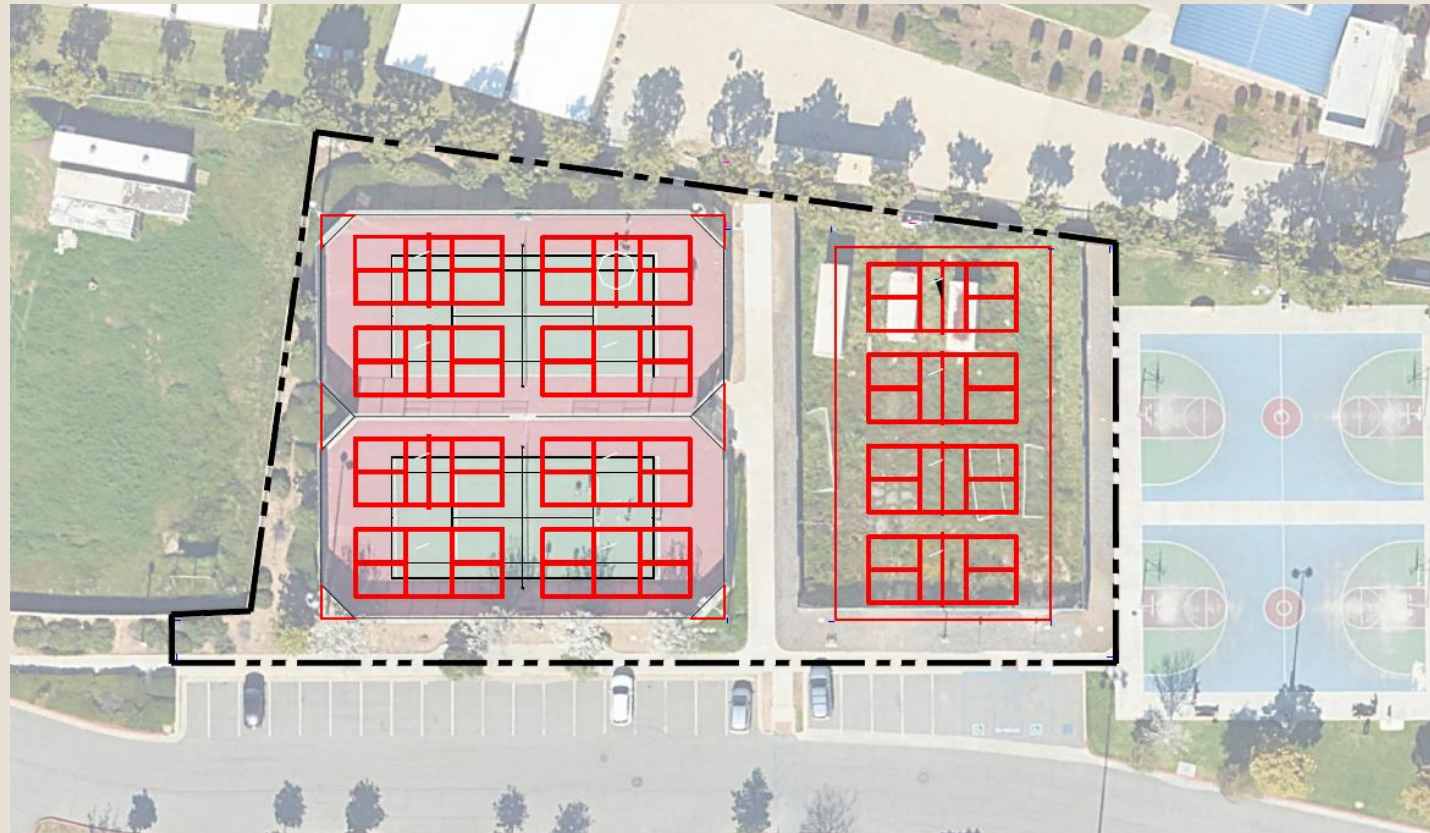
Alternative Option 4

(ORIGINAL CIP PROJECT)

Convert both vacant parcel AND tennis courts at El Cerrito Park to pickleball courts

Net Pickleball Courts (+12)

Net Tennis Courts (-2)



Alternative Option 5

(Recommended Compromise)

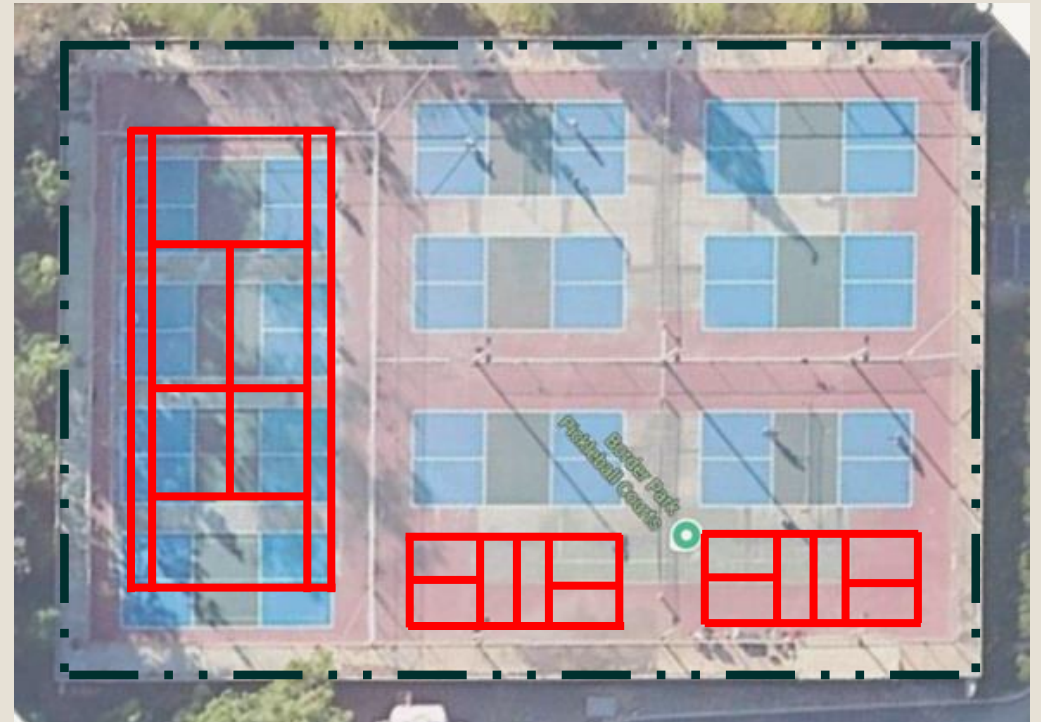
Add 8 Pickleball Courts to El Cerrito Park, but retain 1 tennis court *and* bring 1 tennis court back to Border Park

Net Pickleball Courts (+6)

Net Tennis Courts (0)



El Cerrito Park



Border Park

Alternative Options Summary

Option 1

Status Quo

Option 2a

Convert 1 tennis court at El Cerrito Park to pickleball courts

Option 2b

Convert both tennis courts at El Cerrito to pickleball courts

Option 3

Convert vacant parcel only at El Cerrito to pickleball courts

Option 4

(Original CIP Project)
Convert both tennis courts *AND* vacant parcel at El Cerrito to pickleball courts

Option 5

Add 8 pickleball courts, retain 1 tennis court at El Cerrito Park *and* bring 1 tennis court back to Border Park **(RECOMMENDED)**

Pros

- | | | | | | |
|---|---|---|---|---|---|
| <ul style="list-style-type: none"> No cost Keeps the 2 tennis courts at El Cerrito Allows time to evaluate the impact of new private pay pickleball courts at Eagle Glen Golf Club | <ul style="list-style-type: none"> Low cost to convert tennis court than build new pickleball courts (\$16,000 each) Retains 1 tennis court at El Cerrito Preferred location by pickleball community | <ul style="list-style-type: none"> Low cost to convert tennis courts than build new courts (\$16,000 each) Preferred location by pickleball community Adds 8 new pickleball courts to improve LOS per the PRMP | <ul style="list-style-type: none"> Retains both tennis courts at El Cerrito Preferred location for pickleball community No conflict between Tennis & Pickleball uses | <ul style="list-style-type: none"> Adds 12 new pickleball courts, reaching the LOS per the PRMP Preferred location by pickleball community Good per court cost (\$91,483 each) | <ul style="list-style-type: none"> Retains 1 tennis court at El Cerrito Brings tennis back to Border Park No net loss of tennis courts Reduces pickleball noise at Border Park Achieves PRMP LOS for Pickleball and Tennis Good per court cost (\$150,000 each) |
|---|---|---|---|---|---|

Cons

- | | | | | | |
|---|--|--|---|--|---|
| <ul style="list-style-type: none"> Does not meet PRMP LOS for Pickleball | <ul style="list-style-type: none"> Removes 1 tennis court at El Cerrito Only provides 4 new pickleball courts (vs. 12) | <ul style="list-style-type: none"> Reduces the overall # of Tennis courts in the city to 17 vs. 18, 1 short of the desired LOS. | <ul style="list-style-type: none"> Only provides 4 new pickleball courts (vs. 12) High cost for 4 courts (\$243,000 each) | <ul style="list-style-type: none"> Removes tennis courts at El Cerrito Reduces the overall # of Tennis courts in the city to 17 vs. 18, 1 short of the desired | <ul style="list-style-type: none"> Removes 1 tennis court at El Cerrito Costs approx. \$100k more than original CIP project |
|---|--|--|---|--|---|

August 6, 2025 Meeting

Recap

- Differing views provided in support and opposition of the project from the tennis and pickleball communities
- Varying levels of interest expressed by Council for options 3, 4 & 5
- City Council directed staff to:
 - Continue pause on project
 - Evaluate impact of new pickleball courts at Eagle Glen Golf Club
 - Identify alternative options, including:
 - Utilizing space in corner of El Cerrito Park near freeway
 - Returning tennis to Border Park
 - Return to City Council with an update

Eagle Glen Golf Club

New Pickleball Club

- Opened September 2025
- 17 new outdoor pickleball courts
- Pay to play

Impacts on Border Park pickleball courts

- July 2025 (**prior to** Eagle Glen courts opening)
 - 55 players avg. on Sat. @ 9am
 - 59 players avg. on Wed. @ 7pm
- October 2025 (**after** Eagle Glen courts opening)
 - 64 players avg. on Sat. @ 9am
 - 62 players avg. on Wed. @ 7pm



New Options

El Cerrito Park

Reference Slide (Options 1–3)

1. Northwest corner of park*
2. Potential additional parking
3. Existing tennis courts
4. Vacant parcel
5. Existing basketball courts



**Not suitable for pickleball due to proximity to homes; per the PRMP, pickleball courts should be at least 350 ft. away from nearest residence.*

New Option 6

El Cerrito & Border Parks

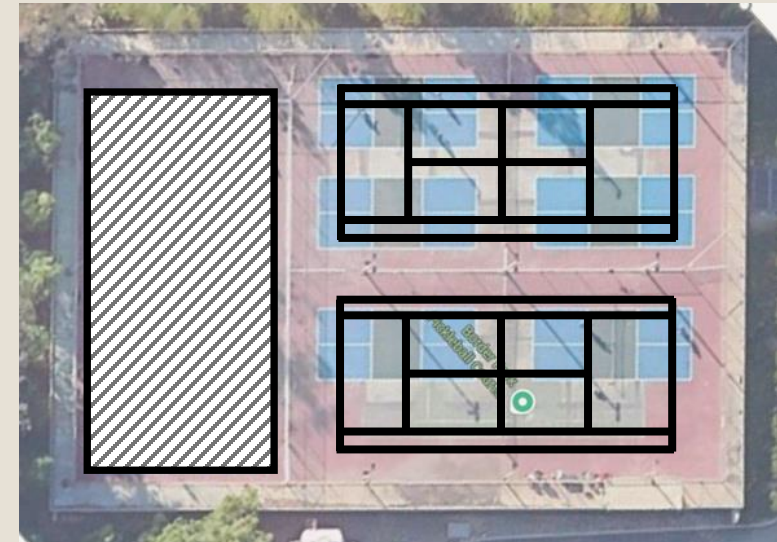
- a. Construct **12 new pickleball courts** at El Cerrito Park *tennis courts AND vacant parcel*
- b. Convert **6 pickleball courts at Border Park back to 2 tennis courts**
 - 1. Option to retain four remaining pickleball courts or convert these courts back to basketball

Net Pickleball Courts (+2 to +6)

Net Tennis Courts (0)



a



b

New Option 7

El Cerrito Park

- a. Construct **12 new pickleball courts** at El Cerrito Park *tennis courts AND vacant parcel*
- b. **Relocate 2 tennis courts** to northwest corner of El Cerrito Park
- c. Construct **additional parking** at El Cerrito Park

Net Pickleball Courts (+12)

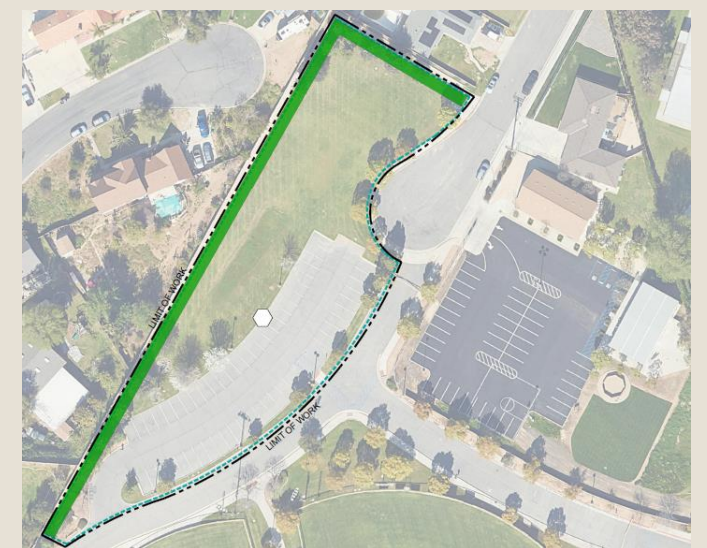
Net Tennis Courts (0)



a



b



c

New Option 8

El Cerrito Park

- a. Construct **11 new pickleball courts** at El Cerrito Park *basketball courts* AND *vacant parcel*
- b. **Relocate basketball courts** to northwest corner of El Cerrito Park
- c. Construct **additional parking** at El Cerrito Park

Net Pickleball Courts (+11)
Net Tennis Courts (0)



a



b



c

New Option 9

Butterfield Park

- a. Construct **10 new pickleball courts** at Butterfield Park

Net Pickleball Courts (+10)

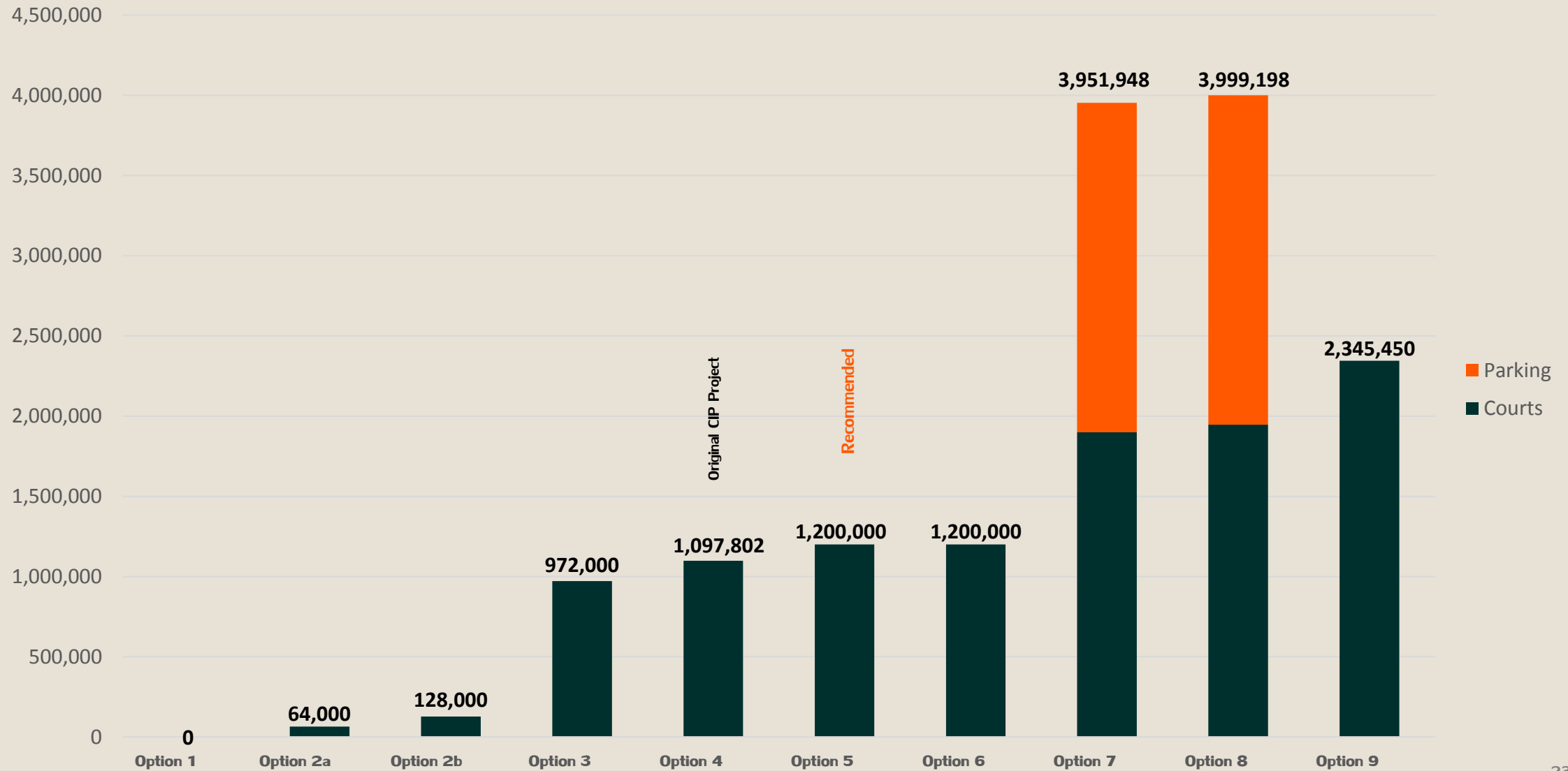
Net Tennis Courts (0)



New Options Summary

	Option 6	Option 7	Option 8	Option 9
	<p>a. Construct 12 new pickleball courts on El Cerrito Park tennis courts AND vacant parcel</p> <p>b. Convert Border Park back to 2 tennis courts; (option to retain 4 pickleball courts or convert back to basketball court)</p>	<p>a. Construct 12 new pickleball courts on El Cerrito Park tennis courts AND vacant parcel</p> <p>b. Relocate tennis courts to northwest corner of El Cerrito Park</p> <p>c. Construct more parking at El Cerrito Park</p>	<p>a. Construct 11 new pickleball courts on El Cerrito Park basketball courts AND vacant parcel</p> <p>b. Relocate basketball courts to northwest corner of El Cerrito Park</p> <p>c. Construct additional parking at El Cerrito Park</p>	<p>Construct 10 new pickleball courts at Butterfield Park</p>
Pros	<ul style="list-style-type: none"> Minimal cost to convert tennis courts vs. build new courts Preferred location by pickleball community Maintains current number of tennis courts in Corona Alleviates impacts from pickleball in Border Park neighborhoods 	<ul style="list-style-type: none"> Minimal cost to convert tennis courts vs. build new courts Preferred location by pickleball community Maintains current number of tennis courts in Corona Keeps tennis courts at El Cerrito Park 	<ul style="list-style-type: none"> Preferred location by pickleball community Maintains current number of tennis courts in Corona Keeps tennis courts at El Cerrito Park 	<ul style="list-style-type: none"> Does not impact other park uses Maintains current number of tennis courts in Corona Keeps tennis courts at El Cerrito Park Butterfield Park located far away from residential areas; no neighborhood impacts
Cons	<ul style="list-style-type: none"> Parking impacts at El Cerrito Park Removes tennis courts from El Cerrito Park 	<ul style="list-style-type: none"> Higher cost to construct parking and relocate tennis courts Adds additional uses to a high programmed park 	<ul style="list-style-type: none"> Higher cost to construct parking and relocate basketball courts Adds additional uses to a high programmed park 	<ul style="list-style-type: none"> Location not preferred by pickleball community
Net Courts	Pickleball (+2 to +6) Tennis (0)	Pickleball (+12) Tennis (0)	Pickleball (+11) Tennis (0)	Pickleball (+10) Tennis (0)
Cost	Total: \$1,200,000	a+b: \$1,899,750 c:	a+b: \$1,947,000 c:	Total: \$2,345,450

Cost Comparison



Per-Court Cost Comparison



*Note. Per Court cost for option 7 and 8 includes the cost for the new parking lot

Funding Gap for New Options

Pickleball Facility Budget Allocation

FY26 CIP = \$1,097,802

New Options

- **Option 6:**
 - Est. cost: \$1,200,000
 - **Funding gap: \$102,198**
- **Option 7:**
 - Est. cost: \$3,951,948
 - **Funding gap: \$2,854,146**
- **Option 8:**
 - Est. cost: \$3,999,198
 - **Funding gap: \$2,901,396**
- **Option 9:**
 - Est. cost: \$2,345,450
 - **Funding gap: \$1,247,648**

FY 26 Park CIP Projects

General Fund projects to cut to pay for additional costs of Options 7, 8, & 9:

- Auburndale Park Amenities Improvements - \$1,522,171
- Promenade Park Improvements - \$1,043,779
- Park Playground Replacements - \$850,000
- River Road Park Improvements - \$550,000
- Promenade Park Musco Lighting - \$475,000
- Park Shade Installations - \$400,000

The Ask

That the City Council provide direction on its preferred option for CIP FC-2026-05 (Pickleball Facility at El Cerrito Park)





Questions



951-739-4985



Donna.Finch@CoronaCA.gov



www.CoronaCA.gov