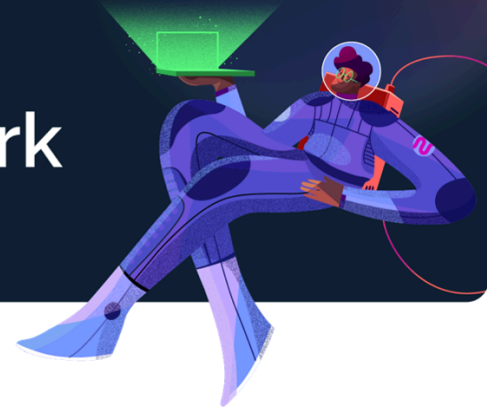




**Superside**

# Statement of Work



Prepared for

**City of Corona**

Client Contact

**Cindy Solis**

cindy.solis@coronaca.gov

Superside Client Development Manager

**Pablo Deniz**

pablo.deniz@superside.com

Plan and Level:	<b>End-to-End Creative Custom</b>
Start Date:	1 December 2025
Monthly Amount:	\$11 667,00
Agreement Term:	12 months
Agreement Term Amount:	\$140 004,00
Billing Frequency	Quarterly
Billing Email:	cindy.solis@coronaca.gov
Payment Terms:	issue date
Payment Method:	Bank transfer
Purchase Order Number:	

Client	<b>City of Corona</b>	400 S Vicentia Ave, Corona, California 92882 United States
Subscription Service Provider	<b>Konsus, Inc. (Superside)</b>	1201 North Market Street, Suite 111, Wilmington, DE, USA 19801

**List Prices for Additional Services  
(the "List Prices")**

In-Plan Overage:	+\$20/hr
In-Plan Fast Turnaround Overage:	+\$50/hr
Out-of-Plan Rate*:	+\$30/hr
Out-of-Plan Fast Turnaround Rate*:	+\$60/hr

Depending on if you need to go over your allotted Plan monthly hours, or need an Out-of-Plan service, these List Prices may apply to you. To determine your applicable List Price, you need to calculate your "In-Plan Hourly Rate" (as defined in Appendix 1) and add the appropriate additional per-hour amount listed here.

These List Prices are subject to change in accordance with Section 11 of the MSA.

**Other Considerations**

This Agreement shall not automatically renew. At the end of each Agreement Term, the Parties may elect to sign a new renewal agreement.

By signing this Statement of Work ("**SOW**") You agree to be bound by the Terms and Conditions of the Master Service Agreement ("**MSA**")

The details of the hours and capabilities offered for each Plan and Level are as set forth at [www.superside.com/legacy-pricing](http://www.superside.com/legacy-pricing) (the "**Pricing Schedule**").

Signed for and on behalf of the Client

Signed for and on behalf of Konsus, Inc.

\_\_\_\_\_

Signed by:  
*David Grenville*

18B3744AC4A842D...

Director of Legal

10/14/2025



Superside

Q&A

Frequently asked questions

**Q What is the difference between in-plan vs. out-of-plan hours?**

**A** In-plan products are the set of products that customers have access to using their monthly plan hours, while out-of-plan products are the set of products that are not covered by the plan hours. The in-plan products are determined by the capabilities and the skills included in a customer's solution e.g. . a Design Essentials customer has access to all Email Design products that require Design and Illustration, but not Campaign Concepting.

Customers will need to pay out-of-plan hourly rates to get access to out-of-plan products, as follows:

- Out-of-plan hourly rate = \$30 + in-plan hourly rate
- Out-of-plan fast-turnaround hourly rate = \$60 + in-plan hourly rate

In addition, customers also need to pay in-plan overage rates if they use more than their allocated plan hours as follows:

- In-plan overage hourly rate = \$20 + in-plan hourly rate
- In-plan overage FT hourly rate = \$50 + in-plan hourly rate

**Q What happens to unused hours?**

**A** We believe in creating value for you. So it just makes sense that any hours you haven't used should stay yours. Unused hours roll over for 3 months while your subscription is active and are used on a first-in first-out basis.



Superside

Q&A

Frequently asked questions

**Q What if I'm not happy with a project?**

**A** While we pride ourselves on being the best in our industry, ultimately, the quality of a creative project is purely subjective - only you can decide if you like it. What we can promise you is a dedicated and attentive team of global top 1% talent who will make every effort to turn your instructions into the best possible creative work product

**Q How long does it take to start/kick off a project?**

**A** Once you have submitted a project on our platform, you should receive a receipt confirmation from our system within minutes. Your Creative Project Manager will then be informed of the new project request and will review the project brief. Your CPM will then reach out to you ASAP to discuss the details and provide a quote and confirm the scope before promptly starting the project.

**Q How does Superside ensure security and confidentiality?**

**A** All data and files sent and stored via Superside.com are SSL encrypted, and we use Stripe for PCI DSS Compliant storing of credit cards. All communication and information is contained within the project team, and all Superside employees have signed NDAs and have completed confidentiality training.