

EXHIBIT "B"
PRIVATE ROAD EASEMENT

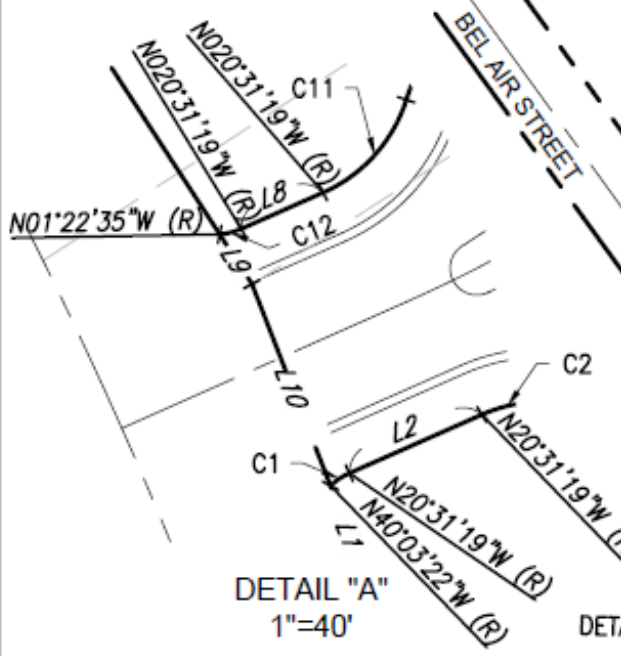
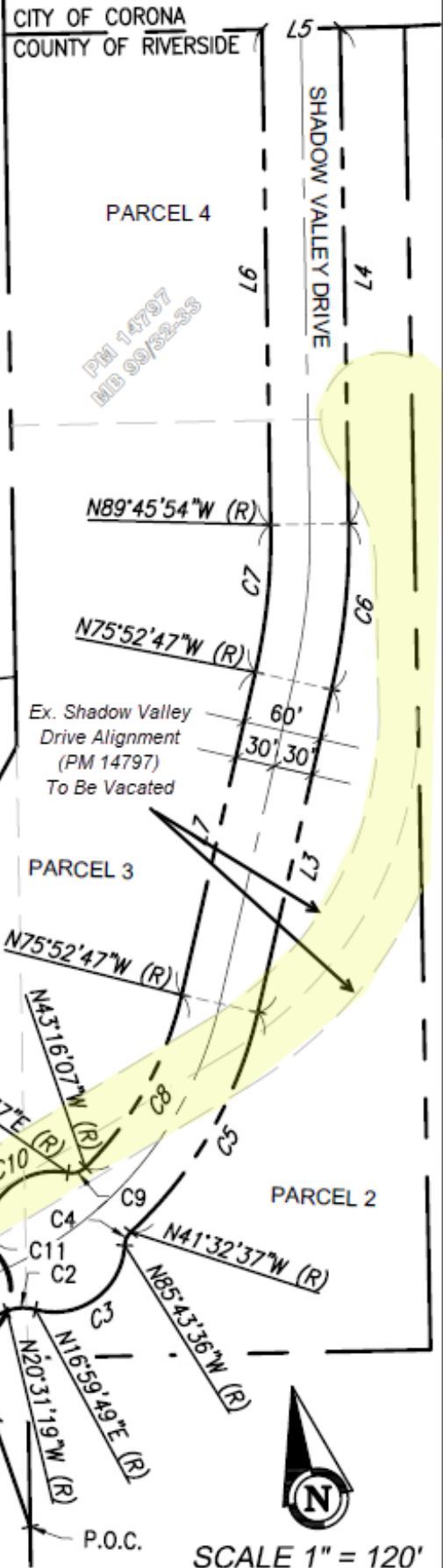
SHEET 4 OF 4 SHEETS

LINE DATA

NO.	LENGTH	BEARING
L1	159.93'	N17°55'14"W
L2	32.54'	N69°28'41"E
L3	254.10'	N14°07'13"E
L4	380.37'	N00°14'02"E
L5	60.00'	N89°50'38"W
L6	380.28'	N00°14'02"E
L7	254.10'	N14°07'13"E
L8	20.13'	N69°28'39"E
L9	13.31'	N29°38'36"W
L10	48.60'	N17°55'14"W

CURVE DATA

NO.	Δ	RADIUS	LENGTH
C1	19°32'03"	15.00'	5.11'
C2	37°31'08"	34.00'	22.26'
C3	102°43'25"	54.00'	96.81'
C4	44°10'59"	15.00'	11.57'
C5	34°20'10"	330.00'	197.76'
C6	13°53'11"	530.00'	128.45'
C7	13°53'11"	470.00'	113.91'
C8	32°36'40"	270.00'	153.68'
C9	55°38'42"	15.00'	14.57'
C10	81°29'33"	54.00'	76.81'
C11	48°35'37"	34.00'	28.84'
C12	19°08'44"	15.00'	5.01'



Armstrong & Brooks Consulting Engineers, Inc.
Civil Engineering - Water Resources - Surveying
1350 E. Chase Drive, Corona, CA 92881
Mail: P.O. Box 78088, Corona, CA 92887
Ph. (951) 372-8400, Fax (951) 372-8430

EXHIBIT 5