

# Appendices

## Appendix A: Area Maps

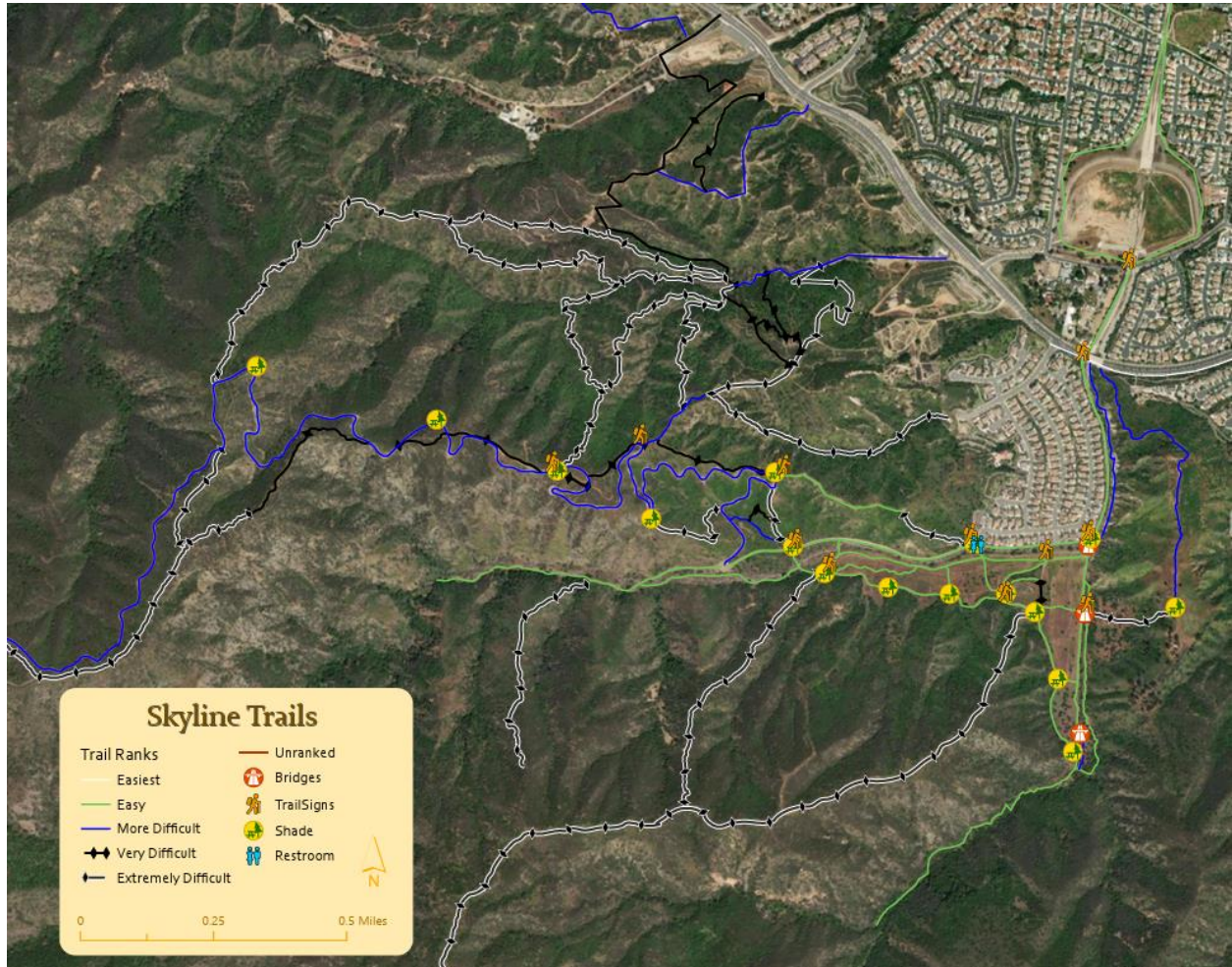


Figure A1. Map of Skyline Area Trails. This map is included in the masterplan as Figure 10.



Figure A2. Map of Skyline Meadow Area Trails. This map is included in the masterplan as Figure 11.



Figure A3. Proposed 'Big' Meadow Loop (approx. 2.25 miles length)



Figure A4. Proposed Meadow Loop (approx. 2.0 miles length)



Figure A5. Proposed West Meadow Loop (approx. 1.5 miles length)

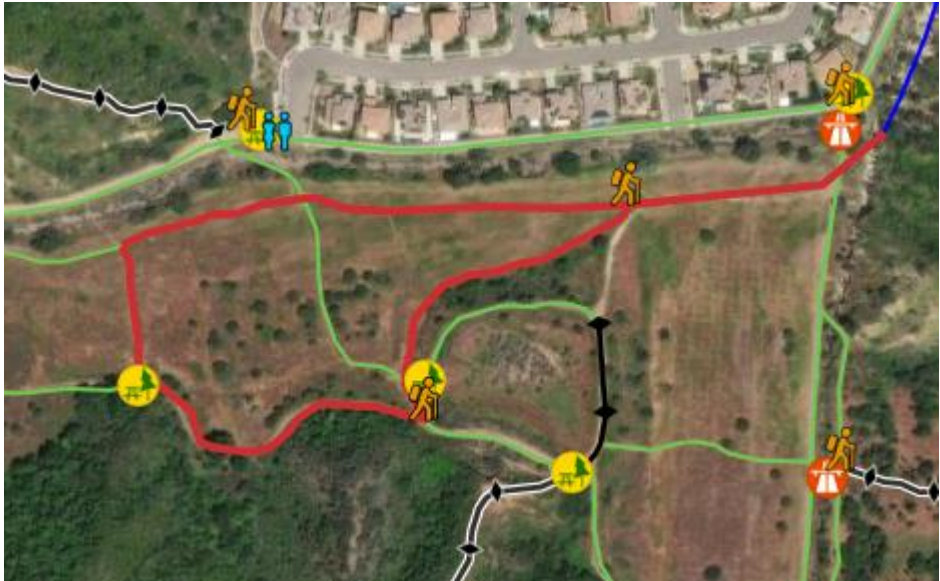


Figure A6. Proposed Center Meadow Loop (approx. 1.0 miles length)

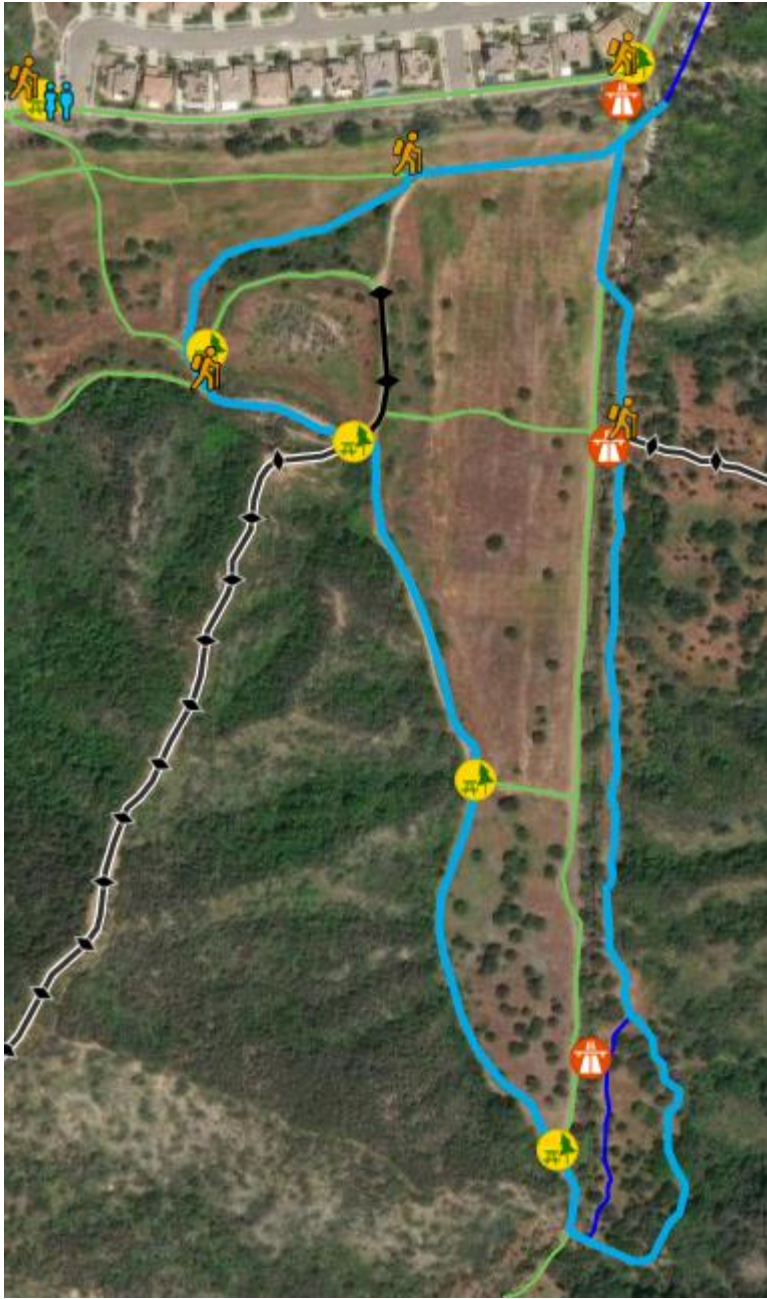


Figure A7. Proposed East Loop (approx. 1.25 miles length)

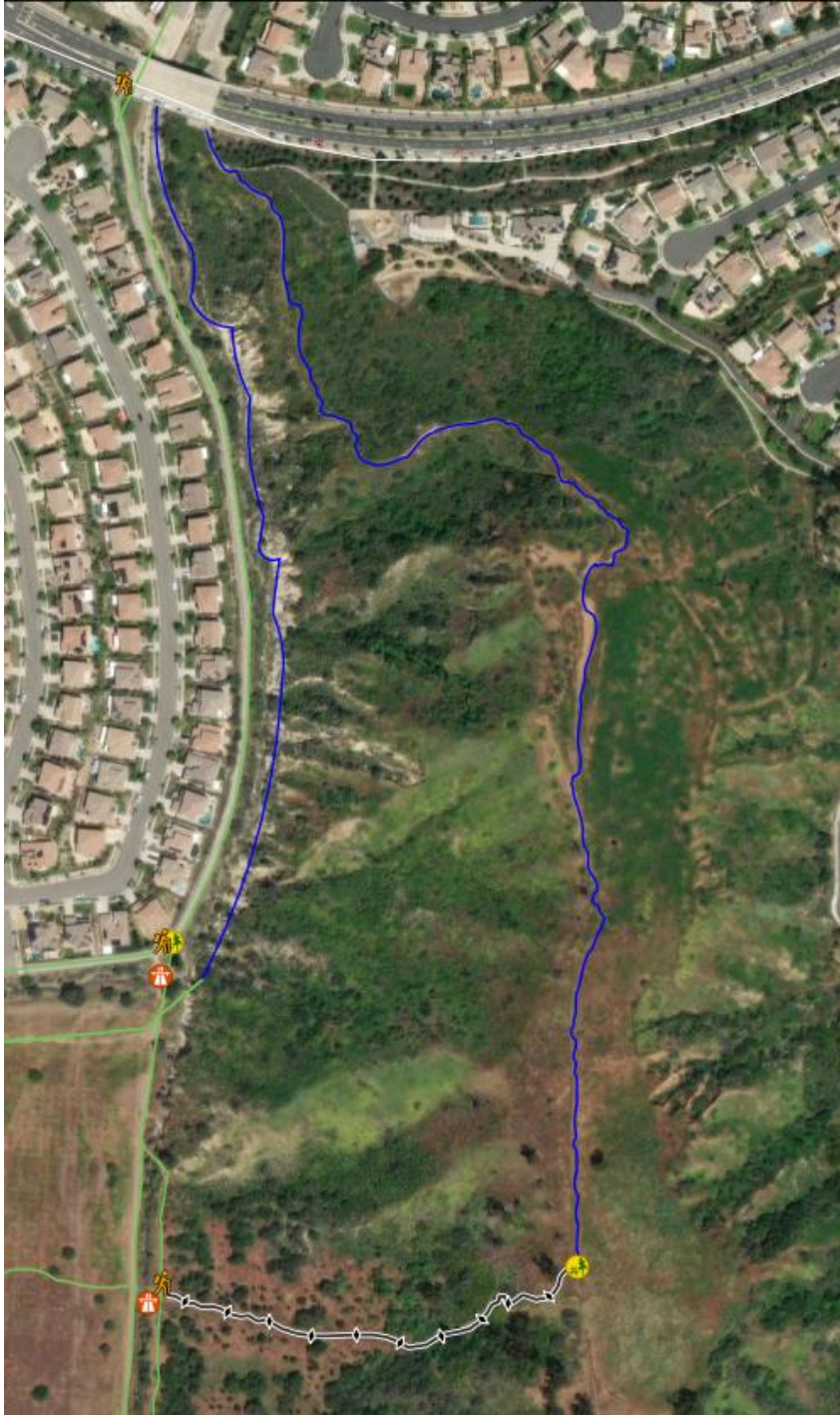


Figure A8. Map of Trails Accessing the 'Upper Meadow'



Figure A9. IMBA Trail Difficulty Rating System



Figure A10. Trail grades

## Appendix B: General Plan:

### **General Plan's Vision and Land Use Policies:**

General Plan Vision 7 : Surrounded by hillsides and etched with canyons, Corona is defined by its beautiful natural setting. Corona offers stunning views from multiple vantage points. Connections will be created between the built and natural environment to increase awareness of and opportunities for enjoyment by Corona's residents. Conservation practices to lessen the burden on the environment will be integrated into daily life.

#### Land Use Policies:

LU-5.5 Enhance Coronas system of parks, greenways, and open spaces by linking these and surrounding natural areas, including along the Temescal Creek, with pedestrian trails and greenways where feasible.

LU-10.6 Establish a multi-use trail system that connects the rural and estate neighborhoods adjoining open spaces and parklands. These may be developed for pedestrians, bicycles, and/or horseback riding where allowed by zoning.

LU-16.3 Protect Viewsheds by pro

prohibiting the placement of electrical transmission lines, substations, and other types of overhead or at grade heavy infrastructure into public open space or other sensitive areas.

LU16.7 Work with Corona Fire, CAL Fire and Forest Service with property owners in affected areas to reduce and minimize the hazards associated with wildfire in the hillsides and open spaces, consistent with the goals and policies of the safety element.

LU-22.14 Require that all proposed development in the very high fire severity zones provide appropriate protection against wildfires in accordance with state law, the California Building and Fire Codes, and regulations promulgated by the Board of Forestry and Fire Protection and CAL-FIRE

CD-4.1 Develop a plan and implement improvements that visually and physically interconnect the City's parklands and link these and residential neighborhoods with the Cleveland National Forest, and other open spaces. This may be accomplished by the installation of a continuous corridor of trees, plantings, informational signage, trails, and/or other defining elements along streets that connect the parks and open spaces or new corridors, where feasible.

CD-4.2 New development adjoining open spaces, washes or have the ability to provide pedestrian connections to off-site trails or pathways should be designed to ensure landscape transitions and compatibility with these resources. Such improvements should be designed to provide adequate flood protection for adjoining properties.

PR-6.1 Strive to identify and connect multipurpose trails to schools, local and regional parks, residential neighborhoods, open space areas, downtown, bikeways, and other community destinations in Corona.

PR-6.2 Require new developments to provide access opportunities to trails that exist in their area or to proposed trails linking parks, recreational areas, neighborhoods, and other areas of high public concentration with a trail design suitable to the area or contribute improvements, dedications, or fees to extend trails.

PR-6.3 Encourage creation of a multipurpose trail system for hiking, biking, and equestrian use in areas commonly used for these purposes, such as along washes, creeks, drainages, hillsides,

parks, and other public use areas. Trails created within the MSHCP conservation areas that are not identified as a covered activity in the Western Riverside County MSHCP are to avoid and minimize impacts on biological resources by following the Guidelines for the Siting and Design of Trails and Facilities [MSHCP Section 7.4.2].

PR-6.4 Cooperate with Riverside County in establishing and completing portions of the county's backbone trail system that crosses Corona.

PR-6.5 Ensure trails that navigate through residential neighborhoods are not obtrusive, invade the privacy of residents, or jeopardize the safety of neighborhoods.

PR-6.6 Locate, design, and regulate the use of multipurpose trails so that they reflect the character and environment where they are located and do not negatively impact natural habitat, wildlife, landforms, or cultural resources or MSHCP Conservation areas.

PR-6.7 Initiate and maintain dialogue with federal, state, and local governments to coordinate access and maintenance of trails that cross jurisdictional boundaries.

PR-6.8 Promote the safe use of trails and require infrastructure and other public rights-of-way to be designed and developed to accommodate trails in a manner that is safe and compatible with the intended primary use of the rights-of-way or easement, where feasible.

PR-6.9 Seek available funding for the maintenance and/or establishment of multi-use trails that accommodate bicycle and pedestrian users.

PR-6.10 Consider numerous outlets to make the city's Trails Master Inventory or Trails Master Plan and bicycle plan easily accessible to the public to increase public awareness.

PR-6.11 Promote the use of trails and bicycle routes through use of wayfinding signs or placards.

PR-6.12 Raise public awareness of the health benefits of walking and bicycling, the safe use of the streets and sidewalks, and the availability of trails, bicycle routes, and greenways.

PR-6.13 Encourage the establishment of various trail classifications in the City that are suited to the environmental context on which they are located and the intended purpose and use of the trail.

PR-6.14 Consider establishment of trail heads and/or staging areas with parking for newly created trails, to the extent feasible; and if the opportunity arises, incorporate trail heads and/or staging areas into existing trail areas



There were 64 requests for trail signs, identifying the different signs. There were 20 requests for nature interpretive signs, 8 request for signage stating to be aware of Mountain Bikers, 7 requests for directional signs on trails, and signs denoting the difficulty of the trails, 6 comments for interpretive signs detailing the area’s history. There were 30 comments requesting installation of mile markers along Skyline drive.

There were 63 comments regarding better maintenance of the trails, particularly cutting back the overgrowth. There were 23 comments regarding maintenance regarding cleaning the area, such as picking up trash.

There were 57 comments that no improvements are needed, and 7 stating that the Skyline area is perfect the way it is.

There were 27 requests for a bridge to connect Hagador trail to Skyline.

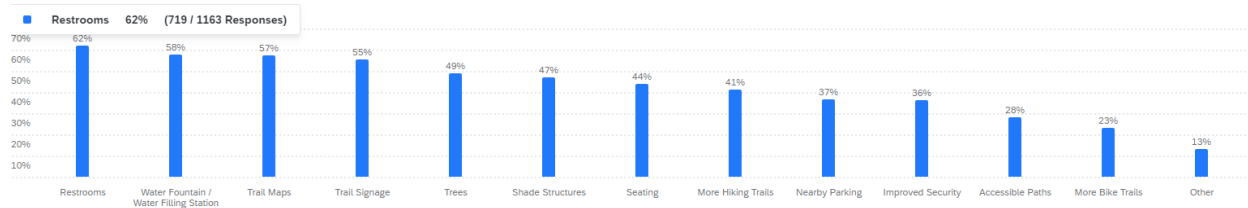
There were 18 requests for easier trails. The sentiment was that all of the single track Mountain Bike and Hiking trails are very steep and can only be utilized by experienced hikers and mountain bikers.

The random sample had the most comments at 12 for more parking, 8 for a restroom, 7 for safer parking, trash cans and seating.

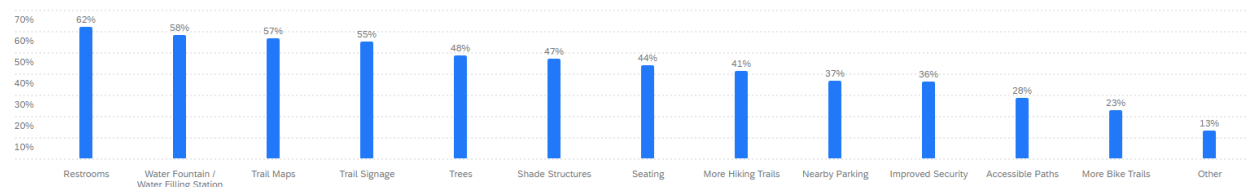
The Orchard Glen residents had the most comments at 3 for “Do Nothing, Leave it alone” and do not add a restroom. There were 2 comments for clean up the area, trail signage, a trail map, dog poop, and adding a water fountain.

### 3. What Amenities would help Skyline be even better?

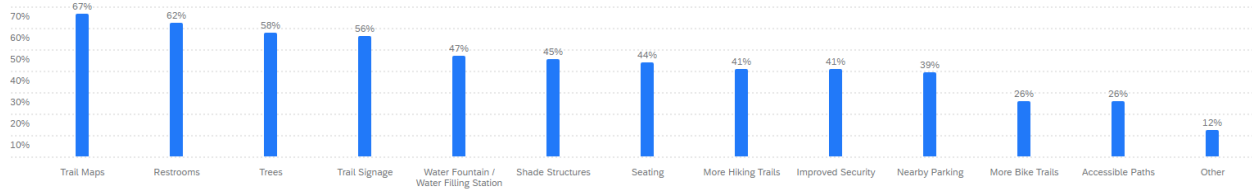
Q4 - What amenities would help Skyline be even better? - All Responses 1,163



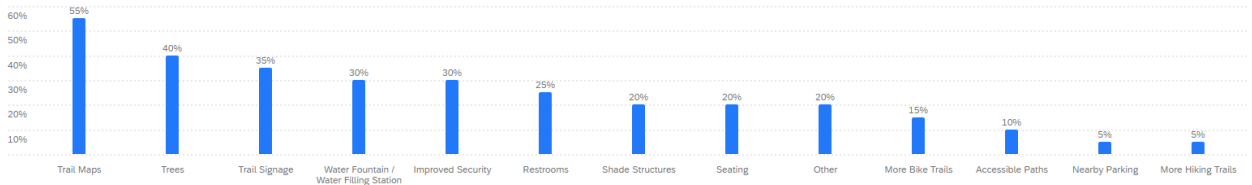
Q4 - What amenities would help Skyline be even better? - Anonymous Responses 1,097



Q4 - What amenities would help Skyline be even better? - Representative Sample 66 ▾



Q4 - What amenities would help Skyline be even better? - Orchard Glen Resident 20 ▾



Restrooms received a high level of interest overall with 62% of the open sample and 67% of the random sample. However only 25% of the Orchard Glen residents felt it was important.

Water fountains also saw strong interest from the open sample (58%) but slightly less from the random sample (47%) and even lower from Orchard Gen (30%).

Trail maps were highly valued across all groups but had a notable increase in interest from the random sample (67%).

Trail signage showed similar levels of interest across the open (55%) and random samples (56%) but only 35% of Orchard Glen residents indicated it would be beneficial.

Trees were also valued more by the open (49%) and random (45%) groups, with less interest from Orchard Glen residents (40%).

Shade Structures had nearly equal interest from the open (47%) and random (45%) groups but a much lower interest from Orchard Glen residents (20%).

Seating was valued equally by the open and random groups (both 44%) but again much lower by Orchard Glen residents (20%).

More hiking trails and nearby parking were of minimal interest among Orchard Glen residents (5% each) compared to the open and random groups, who both saw them as moderate priorities (41% and 39%).

Improved Security had moderate interest from all groups, with the Orchard Glen sample valuing it slightly more than the open group (30% compared to 36%).

Accessible paths and bike trails had relatively low interest across the board, with slight variations.

Other answers show a unique set of responses from Orchard Glen, suggesting they might have specific needs or considerations not captured by the other items.

Overall the data suggests that priorities for improvements differ among the three groups. The open and random samples have similar preferences, especially for restrooms, trail maps and trees. The Orchard Glen residents, however place less emphasis on many of these improvements, indicating that their needs or current satisfaction levels with these amenities may differ. Restrooms, water fountains and trail signage were highly valued by the open and random groups, suggesting these as priority areas if catering to a broad user base.

As detailed in the above bar graphs, the most popular amenities are restrooms, water fountain, trail maps, trail signage, trees, shade structures, seating, more trails, nearby parking and improved security.

#### **4. Is there anything else you would like to add?**

For All Responses to this section:

“leave it alone/do nothing” was mentioned 60 times.

“Safer parking/more security” was mentioned 58 times.

“keep it natural” was mentioned 39 times.

Parking was mentioned 33 times.

“Thank you” was mentioned 38 times.

The rest of the items that were mentioned between 10-20 times were; restroom (14), anti-restroom (13), trash (17), dog bags/dog poop (19), shade/trees (12), trail map (10), separate trails for hikers and bikers (12) trail signage (10), more trails (10), and more trails similar to Skyline (11).

The remaining comments with less than 10 mentions were: seating,(8) anti-seating (1), water fountain (9), clean maintenance (4), trail maintenance (9), fire prevention clearing (4), mile markers (6), historical signs (1), interpretive signage, (4) directional signs (1), beware of bikers/hikers signage (3), big “welcome to Skyline” sign (1), boundary markers (1), safety signs (5), trash/dog poop signage (7), trail etiquette signs (1), signs keep quiet (2), visual markers at lookouts (1), anti motorcycles, ticket them (4), anti-mountain bike (3), anti-ebike (9), pro e bike (1), foothill traffic is too fast, put in a light (4), provide a bridge for Hagador (9), close the trail on fire concern days (2), coffee and snack vending (2), unblock the trail under the bridge (1), anti-vehicles driving on the trails (3), allow more vehicles on the trail (9), easier mountain bike trails (1), ranger led events (2), make parking in the flood basin (3), add a water fall (2), keep people out of orchard glen (3), add a zip line (2), boot washing station (1), group rides (1), rent E bikes (1), cell reception (2), bike park/pump track (4), skate park (1), remove parking altogether (1), wave pool (1), shopping, brewery, coffee shops (1), cars block the fire hydrants (1), pond (1), limit parking (1), bikes are too fast (2), add parking meters (4), don't charge money (3), add an emergency box (2), more trail volunteer days (2), picnic area (1), its too crowded/keep people out (1), people are loud (1), separate trails for hikers and bikers (4), lighting (5), walking loop (1), 5K/Mountain Bike races (2), call box (3), pickleball (1), and easy trails (1).

For the random sample, the most comments were for safety/parking safety at 5, and fire prevention with 3. No bathrooms were mentioned twice, and “keep it natural” was mentioned

twice. The remainder of comments mentioned once each were; bikes are too fast, pump track, more easy mountain bike trails, trail signage, trail map, anti-lighting, anti-motorcycle, leave it alone, make more trails like skyline, keep people out of Oak Glen neighborhood, it is too crowded, parking, pick up dog poop, nature guides, parking in the flood basin, and trash cans.

The Orchard Glen Sample had two mentions of anti-restroom, and fire protection, and one comment each for keeping people out of Orchard Glen neighborhood, easier mountain bike trails, no lighting, keep it natural, anti-motorcycle, dog poop, fix the water fountain, add parking in the flood basin.

For both question 1 and 4 there were several comments that stood out, but were only mentioned once:

- Add trail running or bicycle events.
- Add trail etiquette signs, such as obey rules similar to traffic, don't fan out and block the road, make your presence known
- Signs that indicate where you are going and distance to get there "Weatherball 3.2 miles"
- Have an organized trail repair day
- Signs detailing trail difficulty so that bikers don't get in over their heads. There are IMBA standards black, blue, or green diamond.
- Signs saying Foothill is being monitored/signage for "of you see suspicious activities..."
- Self-guided nature routes for kids
- Parking on both sides of Foothill with a crosswalk
- Hay bales along the climb to rest
- It is difficult to get strollers through the gate
- A trail map that shows difficulty level
- Signage for what to do in case of rattlesnakes
- First aid kit in a bathroom
- Update the mine information plaque
- Be mindful of tree seedlings when mowing

On September 16, 2024 Staff met onsite with several trails enthusiasts and former Trails Working Group Members to review the site and gather their input. The main suggestions included adding a "Blue Level" bike trail designed for kids. The trail would cross the western side of the meadow, winding through the trees. Another popular suggestion was to locate a seat at a flat section of land on the southern side of the meadow, just west of the old pond area, at a flat section that could serve as a resting and viewing spot. There is currently a flat section of land adjacent to an existing trail that could be utilized for this. A seat in this area would provide an easy and accessible resting spot that provides a view of the meadow and the city of Corona.

There was also a suggestion for a seat along the western side of the circular trail that follows the ridge of the old pond, providing views of the meadow and mountains. This would provide another easily accessible viewpoint and resting spot. They requested that we carve a trail along the flat

western side of the meadow, that meanders through the trees and bushes, to create a circuit for the portion of Hagador trail that is within the City's property.

Other frequent requests included installing a restroom and an additional water fountain. There were requests for maintenance of the trails, such as trimming back the vegetation encroaching on the trails, and clearing a tree that is blocking a path. It was requested that when mowing the property, that the City make note to preserve the trails. There were requests to keep the old bridges that cross the ravine on the eastern side of the meadow, and refurbish them so that they can be safely crossed. Adding stairs to the steeper hill sections was suggested, and that the City should host Mountain Bike races or running events. Bike Bells were suggested to mitigate potential accidents between hikers and bikers on the steep single track trails.

In terms of signage, participants asked for trail identification signs, reminders for quiet hiking, pack-in pack-out trash policies, single-track trail rules (such as downhill only and awareness of other users), and caution signs for water. They also requested mileage markers along skyline.

## Appendix D. Sample Maintenance Schedule

The following maintenance standards are recommended for the City-owned areas to ensure a clean, safe, and enjoyable experience:

### Daily

1. Clean and maintain restrooms. Ensure that autolocking door features are functioning properly to prevent undesirable uses.
2. Empty trash cans and replace liners at trailheads.

### Weekly

1. Pick up litter at trailheads.
2. Remove graffiti.
3. Refill dog bag dispensers.

### Quarterly

1. Conduct weed abatement along Tin Mine Canyon creek between Burrero Way and Chase Drive, and along Hagador Canyon creek from the trailhead to Chase Drive.
2. Remove or treat poison oak and other nuisance plants along main trails.
3. Mow the meadow every spring, summer, and fall to reduce fire hazard.
4. Maintain proper right of way clearance and remove vegetation on the paved portion of Skyline drive from the Oak Street basin to the Skyline Drive gate at Burrero way.
5. Inspect seating, signage, and bridges for integrity and vandalism.
6. Inspect newly planted trees and stake positioning to ensure proper growth.

### Annually

1. Inspect, maintain, and repair erosion on hiking trails that cross washes (e.g. near Burrero Drive, and near the western most edge of the meadow).
2. Repair trail surfacing on meadow trails.
3. Cut back overgrown vegetation along trails.
4. Replace Best Management Practices Stormwater Protection to mitigate run off (Winter).
5. Follow approved SOPs for tree establishment, maintenance, and inspection.