

city of
corona

Skyline

AREA MASTERPLAN



Corona, CA

www.CoronaCA.gov

Acknowledgements

City Council

Jim Steiner, Mayor

Jacque Casillas, Vice Mayor

Tom Richins, Council Member

Tony Daddario, Council Member

Wes Speake, Council Member

Parks and Recreation Commission

Stacie Bass, Chair

Robert Boggs Ed.D., Vice Chair

Thomas Munoz, Commissioner

Matt Olsen, Commissioner

Justin McBride, Commissioner

City Staff

Jacob Ellis, City Manager

Justin Tucker, Assistant City Manager

Donna Finch, Community Services Director

Moses Cortez, Parks and Trails Manager

Brett Dawson, Trails Planner

Cindy Solis, Public Information Officer

Jonathan Vellanoweth, GIS Analyst

Table of Contents

- 1.0 Vision and Framework..... 4
- 2.0 Background and History 4
 - 2.1 Property Annexation 7
 - 2.2 Corona Strategic Plan..... 8
 - 2.3. 2020-2040 Corona General Plan 8
 - 2.4 Parks and Recreation Master Plan 9
 - 2.5 Trails Master Plan..... 10
 - 2.6 Skyline Resolution 10
- 3.0 Planning Process 11
 - 3.1 Skyline Trail Inventory..... 11
 - 3.2 Survey 12
 - 3.3 Outreach to User Groups..... 17
- 4.0 Recommendations 18
 - 4.1 Improvements..... 19
 - 4.2 Maintenance and Fire Prevention 22
 - 4.3 Policies and Practices..... 22
- 5.0 Implementation Plan 23

1.0 Vision and Framework

The Skyline Area Master Plan (“the Plan”) is a living document shaped by community input and shared values. **The Plan’s vision is to preserve the 292 acres of the Skyline area in its natural state for the benefit of current and future generations** while providing a few simple amenities to enhance public enjoyment, accessibility, and visitor experience.

The Plan also establishes a strategic approach for the upkeep and enhancement of the meadow, nearby trails, and connections to regional trail systems, including access to the Cleveland National Forest. The Plan is organized into five main sections:

1. **The Vision and Framework** section outlines the goals and structure of the plan.
2. **The Background and History** section details the acquisition and development of the Skyline area over time.
3. **The Planning Process** section discusses the procedures for developing the Plan and methods of obtaining information to form recommendations.
4. **The Recommendations** section outlines proposed improvements for the area, maintenance and fire prevention standards, and policies and procedures to ensure for the long-term care of the area.
5. **The Implementation Plan** section details the proposed projects for the Skyline area over the next three-year period.

2.0 Background and History

The Skyline Area is comprised of approximately 292 acres of land, situated on the southern-westerly border of Corona, California, between Foothill Pkwy. and the Cleveland National Forest (Figure 1.).

Skyline is the city’s most popular hiking destination and is readily accessible to the public. The area is surrounded by nature and is a gateway for hikers and mountain bikers to access the Cleveland National Forest.

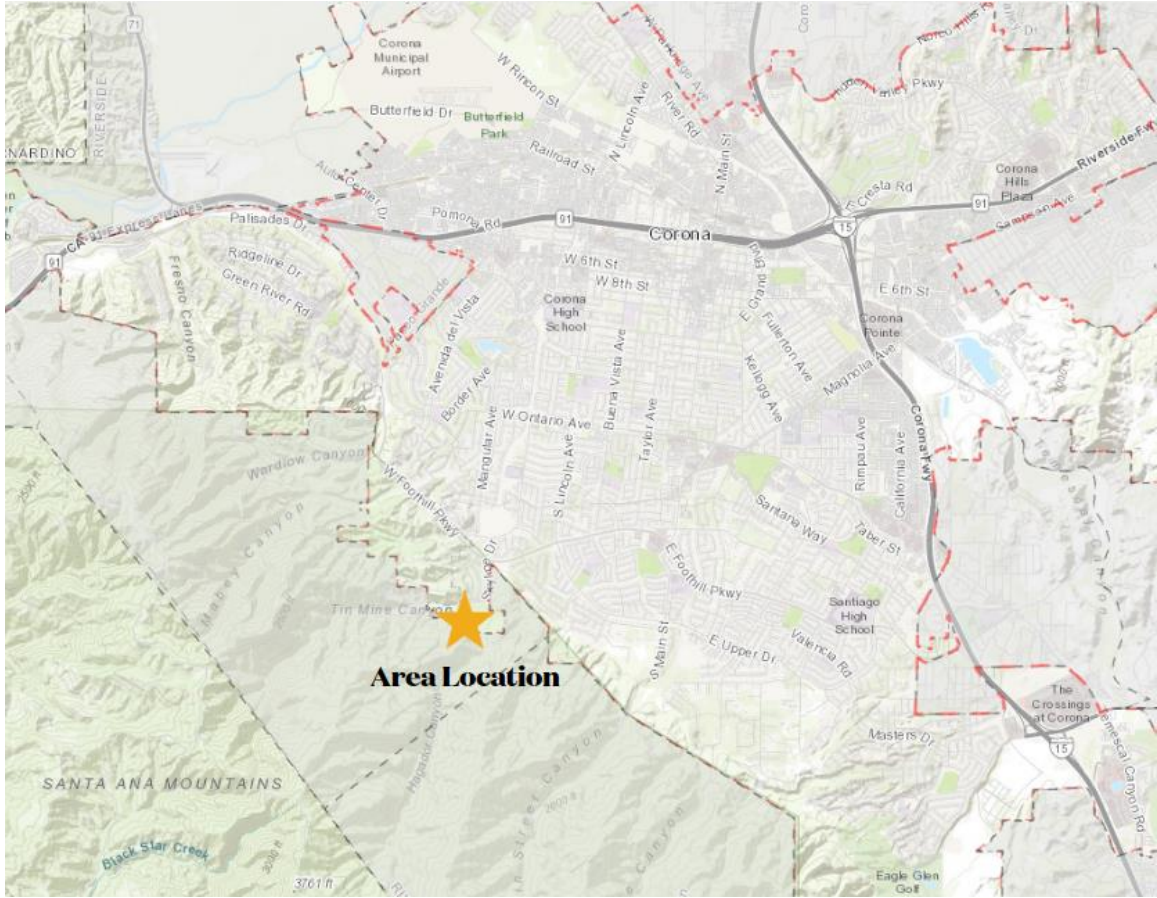


Figure 1. Area map

The Plan focuses on the land owned by the City of Corona, (Figures 2 and 3) which is comprised of the meadow south of Skyline Drive and the hillside area located between Skyline Drive and Foothill Parkway. Surrounded by hillsides and etched with canyons, this area provides stunning views from multiple vantage points and is celebrated for its natural beauty.

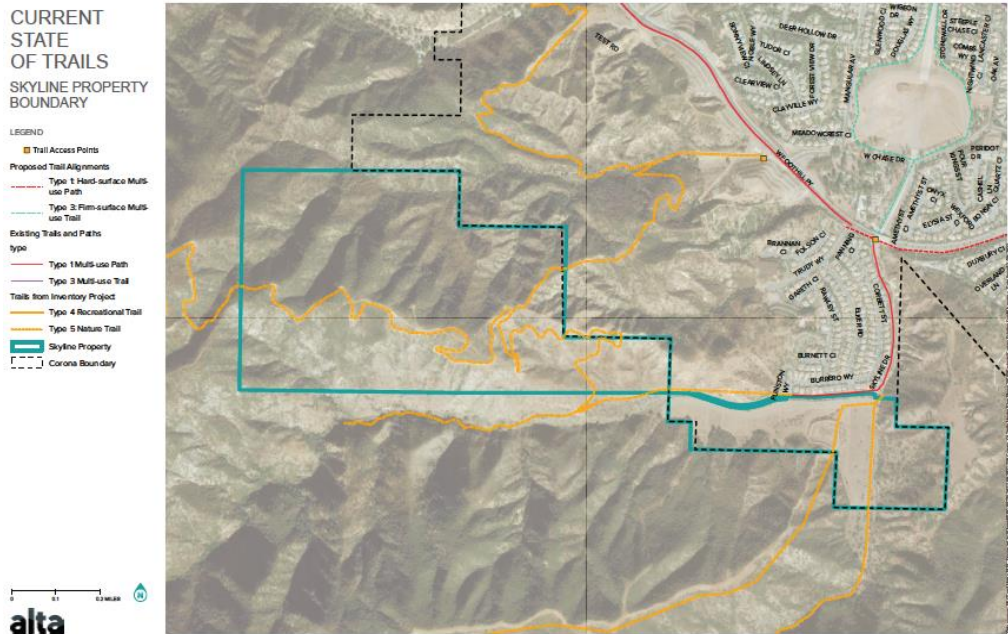


Figure 2. Subject Property



Figure 3. Skyline Meadow

2.1 Property Annexation

The Skyline area was historically designated as an agricultural preserve in the County of Riverside and contained two dwellings with an on-site earthen reservoir for agricultural irrigation purposes. Two natural drainage courses are situated through and adjacent to the site (Annexation 105). The zoning included Open Space on the easternmost 20.85 acres of the site, and Single Family Residential with minimum 9,600 square foot lots on the remaining 39.16 acres. The pre-zoning of the site was a prerequisite for LAFCO to consider the annexation to the City. At the same time, the property to the north of Skyline Drive, known as Orchard Glen, was being developed with single family homes on minimum 7,200 square foot lots.

In 2020, Knowlton Communities proposed a housing development on 39.16 acres of the Skyline meadow area that consisted of 63 single-family homes, with 20.85 acres of the meadow remaining as open space. This project caused concern in the community. It would have blocked public access to the trails that led to the Cleveland National Forest and generated a significant amount of vehicular traffic through the adjacent Orchard Glen neighborhood.

On December 2, 2020, the City Council announced the City's purchase of 292 acres in the Skyline area, which included the area proposed for development by Knowlton Communities. Per the City's Press Release, "With this once in a lifetime legacy project, Corona will nearly double its open space, adding to the current 391 acres of open land." The land acquisition was paid for with \$2.5 million in park development funds, and \$4.14 million from the General Fund and consisted of three parcels:

APN	Size (acres)
275-090-013	62.36
275-070-010	228
275-090-011	1.64 Skyline Dr. dedication

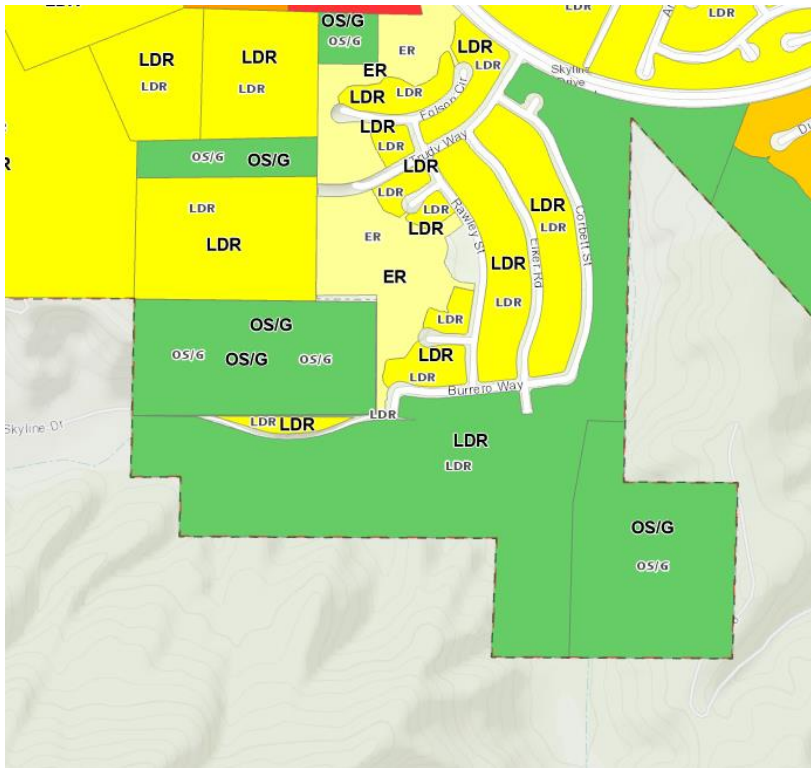
This acquisition helped raise the City's level of service from 2.5 acres of parkland per 1,000 residents to over 4 acres of parkland per 1,000 residents, surpassing the standard set in the 2020 Corona General Plan of 3 acres of parkland per 1000 residents. Furthermore, the acquisition improved resident access to parkland and amenities in this quadrant of the City, which has lower access to these services than other areas of the City.

While the City owns the meadow and adjacent land, access to and maintenance of the Skyline area involves coordination with other government agencies with their respective policies and procedures. The United States Forest Service (USFS) maintains the gate on Skyline Drive, Hagador Canyon Trail, Tin Mine Canyon Trail, and most of the land to the west and South of the City's property. The Riverside County Transportation Department (RCTD) is responsible for maintaining Skyline Drive (as a road) from the Corona boundary to the Orange County line. Most visitors to the Skyline area use Skyline drive for hiking and biking, but RCTD maintains it a limited-access road to be used by USFS maintenance vehicles and easement owners.

2.2 Corona Strategic Plan

The 2021-2026 City of Corona Strategic Plan sets forth a vision for Corona to be a safe, vibrant, and family-friendly community. The Strategic Plan contains two recommended actions for the Skyline area under the goal of Sound Infrastructure: 1) Develop a plan for the use of the newly acquired [Skyline] wilderness space that fosters outdoor recreation activities, in addition to creating formal trailheads; and 2) Create better parking facilities that provide security for vehicles left while residents hike or play. This Plan addresses both issues with recommendations based on community outreach and stakeholder input to improve the Skyline .

2.3. 2020-2040 Corona General Plan



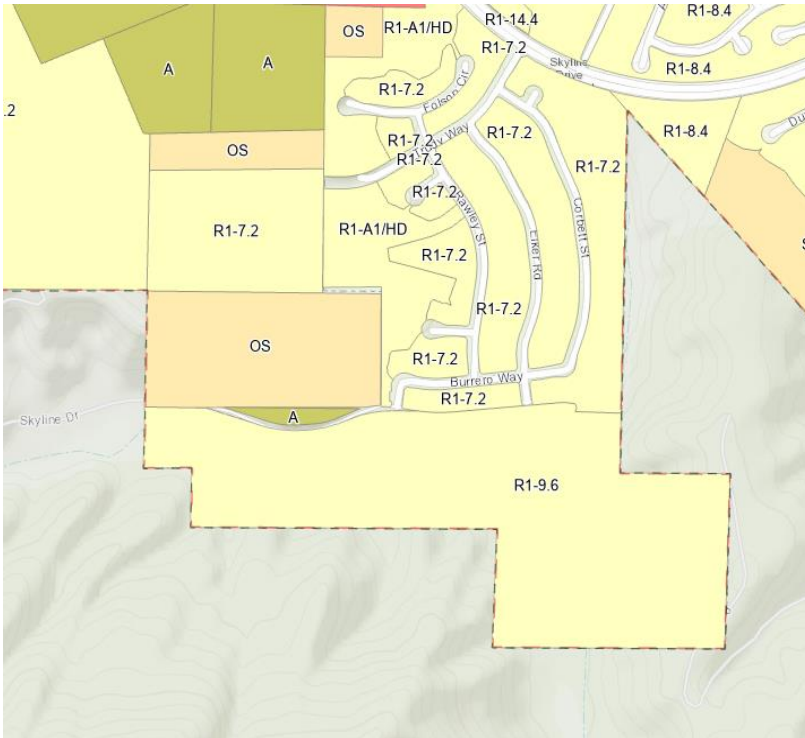


Figure 4. General Plan Zoning

The 2020-2040 Corona General Plan (General Plan) is a comprehensive planning and land use document for the City of Corona. The General Plan originally designated the Skyline area as part of Annexation 105, which annexed 60.01 acres from Riverside County to the City of Corona. In April 2006, a General Plan Amendment converted 39.16 acres of the land from a Rural Residential to Low Density Residential (LDR) land use designation, and the remaining 20.85 acres was converted to Open Space/General (OS/G). Along with the General Plan Amendment was a Change of Zone, which allowed for parkland use in this area.

The General Plan’s Vision and Land Use Policies that apply to this Plan are listed in Appendix A.

2.4 Parks and Recreation Master Plan

The Parks and Master Plan (PRMP), adopted in 2024, provides a guide for the provision, improvement, maintenance, and funding of parks, recreation facilities, and programs in the City of Corona. The PRMP divides Corona into four quadrants, with Ontario Ave. and Main Street primarily serving as the dividing lines between each quadrant. The Skyline area is located within Quadrant 4.

The Quimby Act encourages a minimum of 3 acres of parkland per 1,000 residents. Correspondingly, the 2020-2040 Corona General Plan establishes the same level of service (LOS) standard. Without the Skyline area, Corona’s LOS is 2.42. However, with the acquisition of the 292 acres of the Skyline area, along with other undeveloped parkland, Corona’s LOS exceeds the General Plan standard with 4.0 acres per 1,000 residents.

The PRMP discusses the Skyline Area and the need to “Create a plan that identifies the types of improvements and amenities to include at Skyline, while stewarding and protecting the site’s natural resources. The plan will be developed by city staff and include public engagement and surveying with Corona residents and the neighboring community. Specific features of the site and project costs will be dependent on the outcome of the planning process.”

2.5 Trails Master Plan

The Trails Master Plan (TMP), approved in February 2024, is a comprehensive planning document that creates a framework to guide the development and access to trails in the City of Corona. The TMP reviewed existing trails and identified new opportunities to build and incorporate off street active transportation connections throughout Corona. It provides policy recommendations, prioritized projects, and a 10-year implementation plan.

The development of the TMP included an origin and destination analysis for the Skyline area, which showed that, in 2023, 74% of total trips to/from the Skyline Drive trailhead occurred between Corona or neighboring cities such as Norco, Eastvale and Riverside. 61% of the total trips occurred within Corona, 2% to/from Norco, 4% to/from Eastvale, and 7% to/from Riverside. The Skyline Drive Trailhead had the highest percentage of activity (56%) during the winter season (January-March), and the majority of trail users (53%) accessed the trailhead during the weekends and in the morning between 6 am and 12 pm. Despite the regional draw of the Skyline Drive trailhead, the data showed that majority of the trail users are local residents who live in and around Corona and use the trail multiple times per week.

The TMP identified 5 high priority trail projects in Corona, with Skyline Drive listed as the #3 project in the implementation plan. The Skyline Drive project highlights the need for new standard trailhead amenities, including shade, benches, trashcans, water fountain, bike repair station and kiosk/signage.

During outreach for the TMP, many community members commented that the Skyline Trail tends to be the most crowded trail in Corona, and that parking is difficult in this area. Community members expressed a desire for designated parking for the trail and indicated they would like to see Skyline better maintained, with more trash facilities, regular clean-ups, and amenities such as restrooms at the trailhead.

The TMP also highlighted the opportunity for the Skyline area to formalize access to the Hagador Canyon and Tin Mine Canyon Trails, both of which branch off from the Skyline Trail. To support this, the TMP recommends improving the pedestrian bridge to Hagador from the trail entrance on Skyline Drive.

2.6 Skyline Resolution

On July 3, 2024, the City Council adopted Resolution 2024-076 to reaffirm the City’s original intent for the Skyline area. The Resolution declares the Council’s desire to preserve the 292 acres of the Skyline Trail Area in its natural state, with allowances for minor amenities to enhance public enjoyment and accessibility. It states that these minor amenities may include, but are not limited to, pedestrian bridges, seating, shade structures, trail markers, and signage.

3.0 Planning Process

The process to develop the Skyline Area Master Plan included conducting an inventory of existing trails in the Skyline area, administering a balanced citywide survey to identify desired amenities, and participating in several outreach events to discuss residents' priorities for the Skyline area. This approach helped ensure the Plan represents the interests of the entire city and is shaped by community input and shared values.

3.1 Skyline Trail Inventory

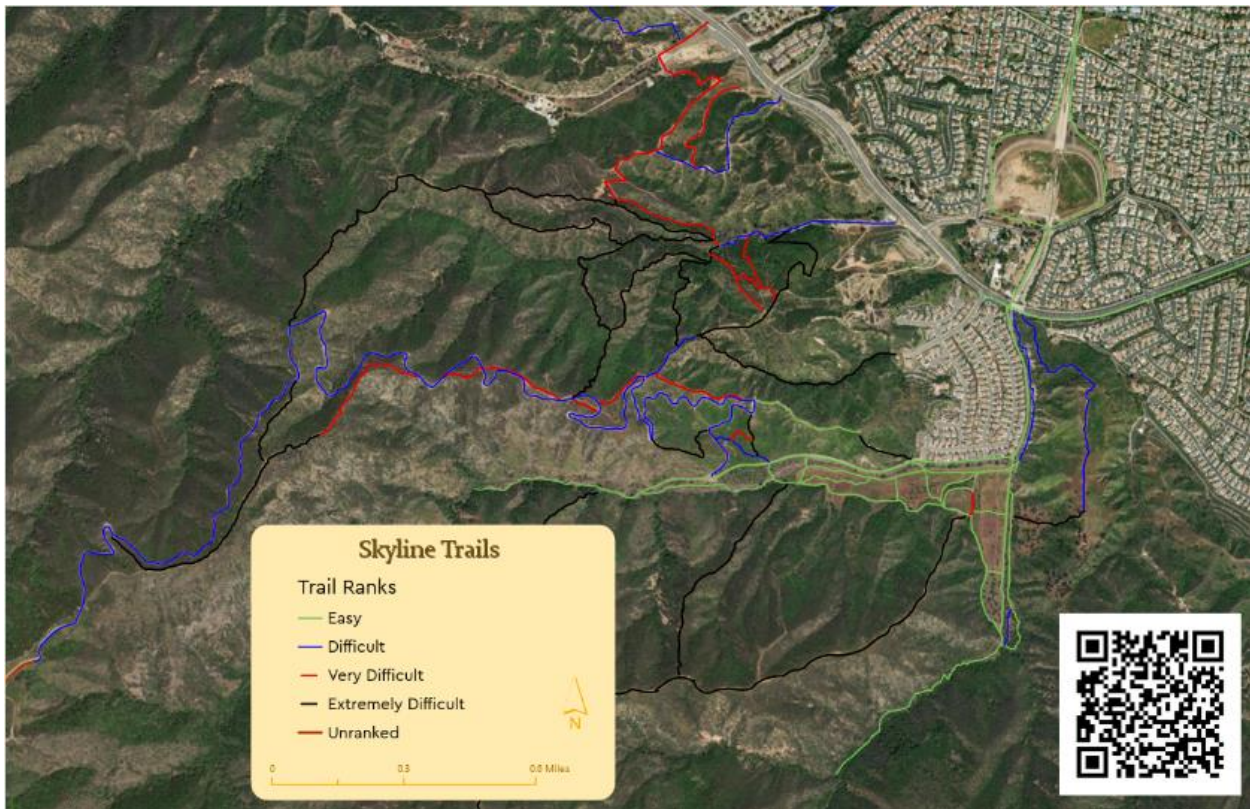


Figure 5. Major Trails in Skyline Area.

A comprehensive assessment and documentation process was conducted for all existing trails within the Skyline area. This included a review of the TMP and Trails Inventory, on-site visits, public outreach, collaboration with volunteers and trail enthusiasts, and a review of publicly available data from popular trail user platforms such as Strava, ESRI Survey 123, Ride with GPA, Avenza Maps, and AllTrails. This information was compiled into a detailed GIS map, which is shown in Figure 5. The map provides essential trail information, including trail locations and difficulty levels.

The Skyline area contains several trails of varying styles and uses. The primary and most popular route is Skyline Drive, which is a dirt road, maintained by Riverside County, that connects to the Cleveland National Forest (CNF) network. There are two official CNF hiking trails: Hagador

Canyon, and Tin Mine Canyon. The meadow area has a patchwork of trails through the center and a main trail that circumnavigates the perimeter. The majority of the trails throughout the hills were created from fire breaks (e.g. Skinsuit Trail) or by the mountain bike community (e.g. Block, Troy Lee).

Skyline Drive and the surrounding area is widely used but lacks standard amenities. The amenities that do exist are located primarily at access points, either along Foothill Parkway (water fountain, trashcans, wayfinding signage) or at Burrero way (bike repair station, informational kiosk, accessible parking, trashcan).

This area is very popular among the hiking and mountain biking communities because it is easily accessible and has a large number of trails. The best marked trails are Tin Mine and Hagador, which are primarily used for hiking. There are approximately 20 single-track trails that were developed over time and are well documented online (e.g., Strava) but do not have physical wayfinding markers. Many of them are very steep and have blind turns, which creates safety concerns and conflicts with hikers and mountain bikers. As displayed in Figure 5, most of the trails have the IMBA rating of double black diamond or “Extremely Difficult”. While the Skyline area is frequented by users for these difficult trails, easier trails are less well-known or developed.

There are various features in the area that are widely utilized but could be improved to increase accessibility while retaining the natural character of the area. For example, in order to get to the Hagador Canyon trailhead or the meadow, visitors must either cross a steep wash or cross a makeshift log bridge. Certain trails, such as the unnamed trail accessing the land directly to the east of the meadow, become exceedingly steep and require hikers to climb on all fours to reach the top. While easy walking circuits exist in the meadow area, none are marked with wayfinding signage for route distance or direction.

3.2 Survey

The City conducted an online survey from July 4 to August 30, 2024, to gauge residents’ perceptions of the Skyline area, understand their priorities, and identify opportunities for improvement. In order to balance the needs and feedback of all Corona residents, survey respondents were invited to participate in the survey in one of three ways:

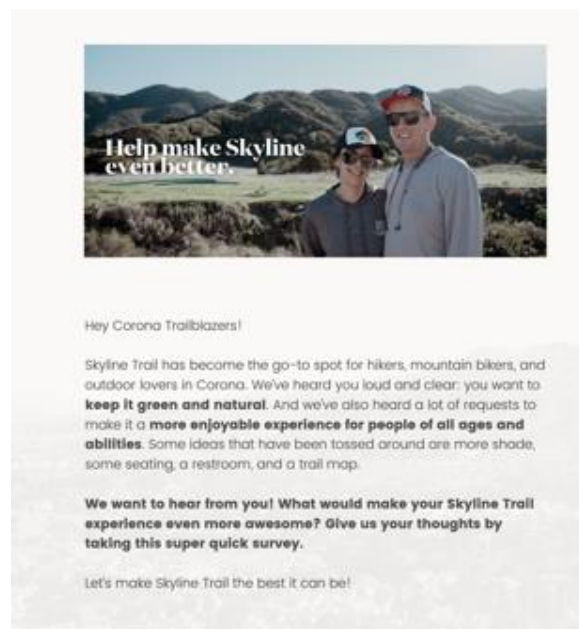
1. **Open Participation:** This survey method allowed any interested individual to participate by utilizing a http link and QR code that directed potential respondents to the survey site. To maximize engagement, the survey was advertised a variety of ways, including on the City’s website, through social media, in the *Community Services Insider* and *Corona Connection*, through flyers distributed at local stores, and at city events such as the Summer Concert Series and popup events at the Skyline Drive trailhead.
2. **Random Sample:** This method distributed the survey to a random sample of 1,000 Corona residents drawn from a list of citywide addresses of single-family and multi-family households with known email addresses. The survey was provided in an email invitation to each resident and was verified to be reasonably geographically distributed throughout the city prior to distribution.
3. **Orchard Glen Residents:** Due to their proximity to the Skyline area, the perceptions of the Orchard Glen residents were of particular interest as their neighborhood is directly

adjacent to the Skyline meadow. All 108 households from the Orchard Glen neighborhood were emailed an invitation to participate in the survey.

Figure 6. Skyline Area survey.

Respondents were provided a brief introduction to the survey (Figure 6.) and asked four questions about the Skyline Area:

1. What do you love about Skyline?



2. How would you improve Skyline?
3. What amenities would make Skyline better?
4. Is there anything else you would like to add?

A total of 1,195 participants completed the survey, of those 1,195 responses, 67 were from the random sample, and 20 from Orchard Glen completed the survey. A summary of the responses is provided below, and a more extensive breakdown of the survey results is provided in Appendix B.

What do you love about Skyline?

The first question on the survey was "What do you love about Skyline?" and included an open text box that allowed respondents to write in whatever response they wanted. Figure 7 (below) is a word cloud for the responses, with the larger font representing the most frequently used words.



Figure 7. Word cloud with most frequent words for “What do you love about Skyline?”

261 responses stated that *Nature* and *Open Space* were what they loved the most. The *variety of trails, hiking and bicycling* were the next most frequently mentioned responses, with 247 comments. The fact that it is *close by*, and you can *easily get access to nature from your home*, was third with 221 comments. The *great views, scenery and natural beauty* were mentioned fourth with 180 comments. Other items that were commonly mentioned were: *exercise and variety in skill levels* (70), *cleanliness* (34), *peace and quiet* (34), *easily accessible and easy for strollers* (28), *open to the public* (17), *please leave it natural* (19), and *easy access to the forest* (13).

When analyzed separately, the random sample of citizens throughout the city most frequently noted *nature* and *open spaces* (25), with being *close by* as second (10) most common response.

The respondents from Orchard Glen indicated *nature* and *open spaces* as what they love (9) with the *variety of trails, hiking, and biking* as second (3).

How would you improve Skyline?

The second question on the survey was “How would you improve Skyline?” Respondents were provided an open text box and allowed to write whatever response they wanted. Figure 8 (below) is the word cloud for all of the responses, with the larger font representing the most frequently used words.



Figure 8. Word cloud, most frequent words for “How would you improve Skyline?”

Safe parking and enhanced security measures, including patrols, signage, and cameras, were highlighted as concerns (137). *Additional parking* (118), *shade* (117), *seating* (93), and *water*

fountains (85) were widely requested. Community feedback also highlighted strong support for adding *restrooms* (185), though some opposed their inclusion (7), with opinions varying by location of the survey respondent. Issues with *litter* (74), *dog waste* (61), and *trail maintenance* (63) were also recurring themes, with calls for *improved cleaning* (23) and *trimming of overgrowth* (63). Many requested *more trail signage* (64), including *difficulty markers* (6), *interpretive signs* (26), and *mile markers* (30).

While the majority advocated for some improvement, a number of respondents expressed a desire to leave the area as it is (64). Other suggestions included *connecting trails with a bridge* (27) and *creating easier trails* (18) for less experienced users. Overall, the feedback between the three sample sizes were very similar, with the Orchard Glen residents skewing slightly more for minimal changes.

What amenities would help Skyline be even better?

The third question on the survey was “What amenities would help Skyline be even better?” Respondents were provided a list of 12 specific amenities and an “other” option with a text box for a write-in response. Participants were allowed to select as many options as they wanted.

The results are presented in Table 1 (below), arranged by the highest percentage of support from the largest respondent group, the open participation group. The survey revealed varying preferences for amenities across the three survey groups.

Restrooms were the most desired feature overall, with strong interest from the Open (62%) and Random (67%) samples, but lower support from Orchard Glen residents (25%). *Water fountain*, *trail maps*, and *trail signage* were all highly requested amenities (over 50%), following a similar trend of greater support by the Open and Random groups than the Orchard Glen group. Other amenities had varying levels of support and are represented in Table 1 (below).

Table 1. Desired amenities by respondent groups.

What Amenities would help Skyline be even better?	Open 1,108	Random 67	Orchard Glen 20
Restrooms	62%	67%	25%
Trail Maps	57%	67%	55%
Water Fountain	58%	47%	30%
Trail Signage	55%	56%	35%
Trees	49%	58%	40%
Shade Structures	47%	45%	20%
Seating	44%	44%	20%
More Hiking Trails	41%	41%	5%
Nearby Parking/More Parking	37%	39%	5%
Improved Security on Foothill	36%	41%	30%
Accessible Paths	28%	26%	10%
More Bike Trails	23%	26%	15%
Other	13%	12%	20%

Overall, *restrooms, trail maps, trees, trail signage, and a water fountain* ranked as the highest-priority improvements by the overall community.

Is there anything else you would like to add?

The last question on the survey was “Is there anything else you would like to add?” Respondents were provided an open text box and allowed to write whatever response they wanted. Figure 9 (below) is the word cloud for all responses, with the larger font representing the most frequently used words.



Figure 9. Word cloud, most frequent words for “Is there anything else you would like to add?”

The most frequent responses were variations or repeats of answers previously provided on the survey and highlighted a preference to *leave it alone/do nothing* (60), *improve parking safety and security* (58), *keep it natural* (39), and *more parking* (33). The remaining suggestions highlighted a wide range of ideas, with items like *restrooms* (14), *trash* (17), *dog bags/dog waste* (19), and *shade/trees* (12) among the most cited. Several suggestions addressed *trail improvements*, including *maps* (10), *signage* (10), *separate trails for hikers and bikers* (12), and *adding new trails* (10). Less frequent mentions included amenities like *adding a bridge at access Hagador Trail* (9), *water fountains* (9), *seating* (8), *mile markers* (6), and safety features such as *fire prevention clearing* (4), *safety signs* (6).

Unique ideas, mentioned only once or twice, ranged from *trail etiquette* and *level of difficulty signage* to *self-guided nature routes*, *vending machines*, *emergency boxes*, *bike parks*, and *a zip line*.

Overall, the feedback was consistent in prioritizing preservation along with a few select amenities: restrooms, water fountains, trail maps, and trail signage, trees, shade and seating, nearby parking, and improved security.

3.3 Outreach to User Groups

Staff participated in seven outreach activities at Skyline Drive and City events from July 18 through August 8. During these engagements, staff discussed the Skyline Area Plan and asked all respondents to include their comments in the online Skyline survey to capture all feedback in a single location.

During the outreach events, several residents expressed their desire for a bridge that would connect Skyline Drive to Hagador Trail. Currently, trail users step over a guard rail and cross this area on an improvised log bridge over the Tin Mine creek. There are two historical bridges that cross the drainage area on the eastern portion of the meadow. Many requested to keep these bridges and refurbish them to provide access to the eastern section of the property and keep a historic aesthetic feature for the area. There were also requests for the trail directly east of the meadow to be more accessible, and for circuit trails that residents could use to walk or run on.

Many respondents complained about the lack of parking and the break-ins on Foothill Pkwy. Mountain bikers stated a tree had fallen on the southernmost trail along the south side of the

meadow, which makes access to this area more difficult. Several inquiries were also made about why the well-used access through Skyline Drive was blocked underneath the Foothill Pkwy overpass.

On September 16, 2024, staff met with several trails enthusiasts and former Trails Working Group members at the Skyline area to review the site and gather their input. Because the majority of the trails are double black diamond or extremely difficult, the group proposed adding a kid friendly “Blue Level” bike trail on the western side of the meadow. They also suggested installing seating at two scenic, accessible spots; one near the old pond area overlooking the meadow and the city, and another along the ridge trail offering mountain views.

Additional requests from the Trails Working Group include incorporating a circuit trail on the meadow which would fulfill the need for a close walking circuit, and maintaining existing trails by trimming vegetation, preserving the old bridges with refurbishments, and adding stairs to steep sections. Restrooms, an extra water fountain, and bike bells were recommended for convenience and safety. For signage, they suggested trail identification markers, reminders for quiet hiking, pack-in pack-out trash rules, single-track guidelines, caution signs for water availability, and mileage markers along Skyline Drive. Hosting mountain bike races and running events was also proposed to boost community engagement. Designating certain trails for “Hiking only” and “Biking only” were discouraged by the users as it would limit the number of trails each group could use and would be difficult to enforce.

4.0 Recommendations

The following recommendations for the Skyline area are derived from recommendations included in the Trails Master Plan, comments received from the Skyline area survey, outreach events, and comments made by the trail user groups. Recommendations are divided into three sections: Improvements, Maintenance & Fire Prevention, and Policies & Procedures.

4.1 Improvements

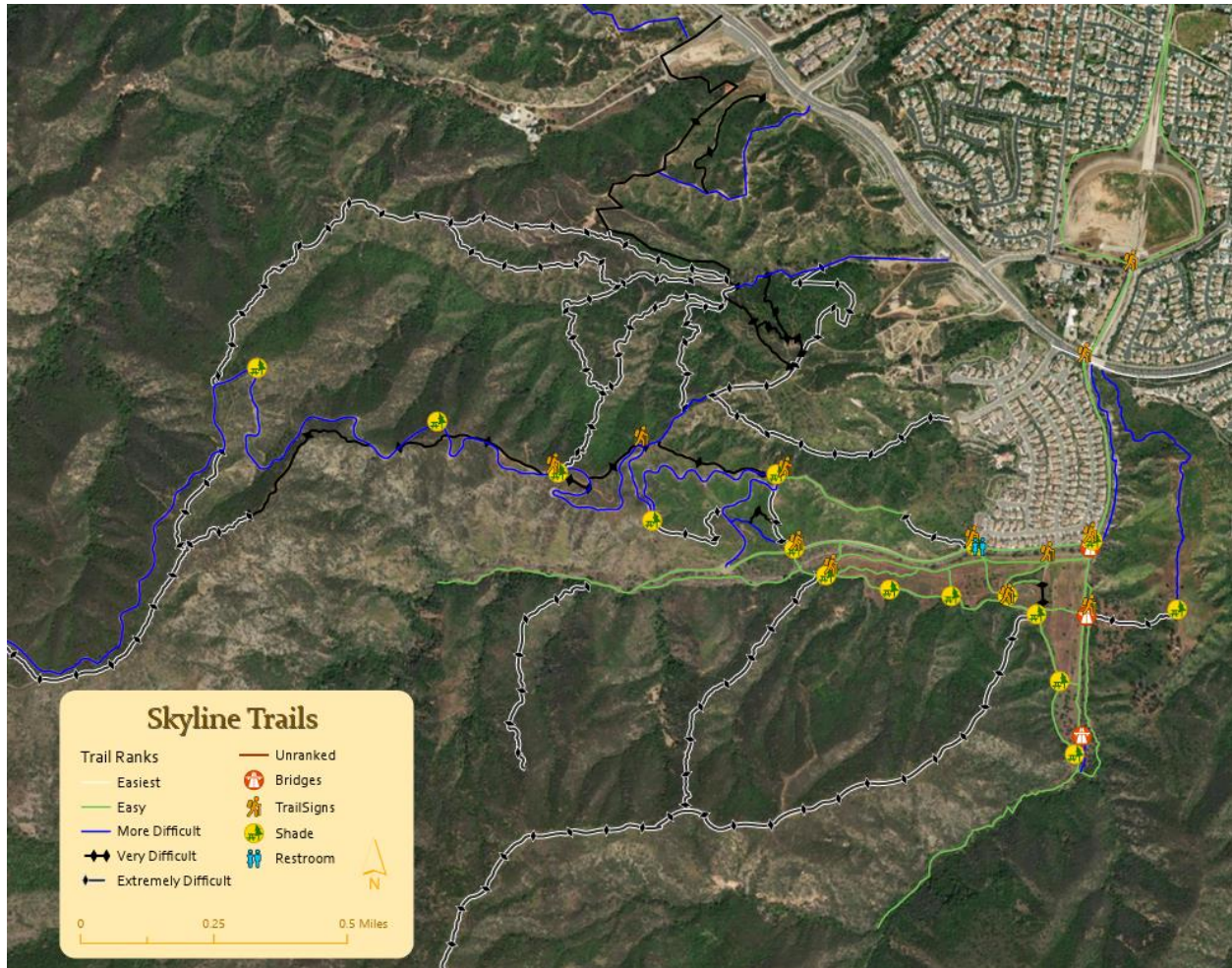


Figure 10. Map of Skyline Area Trails and Location of Proposed Improvements

Trailhead Amenities

1. Install a restroom at the trailhead on Skyline Drive and Burrero Way.
2. Add a water fountain with dog bowl and bottle filler at the trailhead of Burrero Way and Skyline Drive.
3. Install a large area map and informational signage at the trailheads at Foothill Parkway and Burrero Way.

Seating and Shade

4. Provide seating and shade including, but not limited to the following locations:
 - a. At the trailhead on Skyline Drive and Burrero Way.
 - b. Lookout areas at higher elevations along Skyline Drive.
 - c. At sites along the perimeter of the meadow.
 - d. Near the major trailheads and trail crossings.
 - e. Plant trees along the walking paths to create a canopy of shade at various locations throughout the meadow.



Figure 11. Map of Skyline Meadow Area Trails and location of proposed improvements

Trash Cans

5. Install trash cans with dog bag dispensers at trailheads.

Trails & Bridges

6. Label and publicize circuit routes in the meadow with known distances and trail markers. (Figures A3-A7 in the appendix identify proposed loops with approximate distances.)
7. Maintain and improve existing nature trails utilizing US Forest Service best practices for trail maintenance.
 - a. Widen trails in the meadow to a width of 6 feet (where possible) to create a fire break
 - b. Utilize durable natural materials (e.g. decomposed granite) for tread maintenance.
 - c. Utilize trail design features that minimize erosion and impact on the natural environment
8. Coordinate with volunteer groups and trail sponsors to maintain trails and surrounding areas.
9. Install a pedestrian/bike bridge connecting Hagador Trail and the lower meadow to Skyline Drive. (Figure 11)
10. Refurbish or replace the two bridges on the east side of the lower meadow that cross the drainage channel. (Figure 11)

11. Explore an alternative trail alignment from the eastern side of the meadow to the 'upper meadow' that could provide a safer and easier route than the existing steep, direct route. (Figure A8)
12. Explore improving the existing trail to the 'upper meadow' from Foothill Pkwy that is east of the wash and runs south, upslope, along the ridge of the wash. (Figure A8)
13. Improve or develop trails that have a 'blue' or easier mountain bike difficulty rating to increase the variety of mountain biking opportunities for various skill levels and user groups. (Figure 10)
14. Where possible, separate hikers and mountain bikers on joint use trails to minimize potential conflict.

Wayfinding & Signage

15. Install safety signage at the main trail entrances and the trailhead kiosk alerting individuals that trails can be dangerous, conditions can change, and to recreate at their own risk.
16. Install signage along major trails that provide the name of the trails, trail difficulty, and simplified illustrations alerting users of trail conditions. (Figures A10)
17. Create a color-coded trail map, per the IMBA Trail Difficulty System (Figures 10 & A9), to notify users of trail difficulty throughout the Skyline area.
 - a. Post this map at the trailheads.
 - b. Make the map available online and post a QR code so trail users can queue it up on their phone.
18. Update the trailhead kiosk to include information on:
 - a. Proper hydration and awareness of water supply
 - b. Rattlesnake safety information
 - c. Pack in and pack out
 - d. 'Good Neighbor' policies
 - e. Emergency information

Safety & Security

19. Install security cameras at trailheads with signage stating the area is under surveillance.
20. Improve lighting conditions near trailheads and parking areas.
21. Increase the presence of Park Rangers on trails and in the area.
22. Explore installing a 'bell station' for mountain bikers at major trailheads to lend bells that would help alert others when bikers are on the trail.

Parking & Accessibility

23. Pursue opportunities to expand parking.
24. Install a crosswalk on Foothill Pkwy at Trudy Way to improve safety for pedestrian crossings.
25. Re-open Skyline Dr. under Foothill Pkwy. to provide access to the area from the North.
26. Explore opportunities to improve access to the meadow area for individuals with mobility impairments.

Additional Open Space

27. Pursue land acquisition opportunities that would protect or enhance the natural environment of the Skyline area.

4.2 Maintenance and Fire Prevention

Routine Practices

1. Create and implement a routine maintenance schedule that includes tasks to be performed on a daily, weekly, quarterly, and annual basis. (Sample in Appendix D)
2. Establish routine coordination meetings with government agencies that have a shared interest in maintaining the area.
3. Establish a system for volunteers and trail users to report maintenance concerns to staff.

Fire Mitigation and Prevention

4. Ensure that routine maintenance and usage policies include fire prevention strategies such as weed abatement, fuel load reductions, and ignition source elimination.
5. Maintain existing trails to function as fire breaks, where feasible.
6. Coordinate with USFS on controlled burns in the area.

4.3 Policies and Practices

The Plan recommends several policies and practices to support the long-term sustainability of the Skyline area. Implementation of these policies and practices may require further action by the City through the adoption of administrative policies or amendments to the Corona Municipal Code.

1. Maintain the Skyline area in its natural state for the benefit of current and future generations, with allowances for minor amenities to enhance public enjoyment and accessibility.
2. Explore establishing a volunteer group to support routine maintenance and trail improvements.
3. Amenities and improvements should be designed to complement the natural environment.
4. Only native plants and trees will be used to supplement or revegetate the area.
5. The area will remain open for public use except for emergencies (e.g. floods, fires, etc.).
6. Users must follow 'good neighbor' guidelines including:
 - 6.1. No yelling or loud noise is allowed near the residential area.
 - 6.2. Open fires are prohibited.
 - 6.3. Overnight camping is prohibited onsite.
 - 6.4. Dogs must be on a leash at all times.
 - 6.5. Pet waste must be picked up and deposited in trash receptacles.
 - 6.6. Fireworks and other hazardous materials are prohibited.
 - 6.7. Smoking and vaping is not permitted on site (to reduce fire risk)
 - 6.8. Littering is strictly prohibited. Users must pack out all trash or deposit it in receptacles
 - 6.9. Alcohol, drugs, and intoxicating substances are prohibited onsite.
 - 6.10. Do not block entrances, exits or emergency access routes.
 - 6.11. Do not feed or disturb wildlife.
 - 6.12. Collecting rocks, plants or other natural materials is prohibited.
 - 6.13. Weapons are prohibited onsite.
7. Users must practice good trail etiquette including:
 - 7.1. Staying on designated trails to protect vegetation and prevent erosion.
 - 7.2. Hikers yield to equestrians
 - 7.3. Bikers yield to hikers and equestrians

5.0 Implementation Plan

For the purpose of this Plan, 29 projects, summarized in Table 2 below, are proposed to be completed within a three-year time period. The projects are prioritized based on feasibility of construction, cost, and increasing safety for the area. Projects that require additional design and review will be vetted further during the budget processes prior to implementation.

Table 2. Implementation Plan

#	Project Name	Project Description	Project Timeline	Est. Cost
1	Establish Trail Volunteers	Establish a group of volunteers to support area maintenance and notify staff of trail conditions.	FY26	Staff Time, Volunteers
2	Area Map	Create an area trail map to be posted at trailheads with a QR code that links to an online version map.	FY26	Staff Time, \$500 for map prints
3	Safety Patrols	Coordinate with Park Rangers to increase patrols on trails and along Foothill Pkwy.	FY26	Staff Time
4	Meadow Seating	Add seating throughout meadow	FY26	\$12,500
5	Trash Cans and Dog Bag Stations	Install 6 branded metal trashcans with sleeves and dog waste bag dispensers.	FY26	\$12,200
5	Trails Day	Host annual Trails Day event.	Ongoing	Staff Time, Volunteers
7	Skyline Bridge	Construct bridge between Skyline Drive and the meadow to improve pedestrian access to Hagador Canyon and the meadow trail circuits.	FY26	\$650,000
8	Trailhead signage	Install signage at the Foothill Pkwy. and Burrero Way trailheads	FY26	Staff Time, \$1000
9	Maintenance Plan	Create and implement maintenance plan	FY26	Staff Time, Volunteers
10	Shade Trees	Host events to plant shade trees along the meadow trails	FY26-27	Staff Time, Volunteers,

				\$36,000 for 100 trees
11	Trail circuits	Install trail signage for the circuit trails in the meadow. Remove brush and cut trails to 6' width.	FY26-27	Staff Time, Volunteers, \$1500 for trail signs
12	Trail Signage	Add signage at major biking trails detailing the name of the trails and the difficulty, as well as the language instructing users to be aware of hikers/bikers	FY26-27	Staff time, Volunteers, \$1500 for trail signs
13	Improved Security on Foothill	Install camera system and implement signage along Foothill Pkwy.	FY27	TBD
14	Restroom and Water Fountain	Install an ADA all-gender single concrete block restroom with a security camera and autolocking doors, a water fountain with dog bowl, and bottle filler at trailhead at Burrero and Skyline drive.	FY27	\$300,000- Restroom \$25,000- Water Fountain
15	Shade Trees at trailhead	Add shade trees for the existing benches at the Burrero trailhead.	FY27	\$1,200
16	Skyline seating	Install seating at select resting and elevated viewpoints adjacent to Skyline Drive	FY27	\$2,500
17	Refurbish bridges	Refurbish the existing bridges to provide a safe pedestrian access across the Hagador wash.	FY27	\$25,000
18	Blue trails	Explore creating or improving "Blue" difficulty level trails to provide a beginner level alternative to the existing "Black" level trails.	FY27	Staff time, Volunteers, Cost TBD
19	Crosswalk at Trudy	Install a crosswalk with flashing lights and an ADA ramp on Foothill Pkwy at Trudy way.	FY28	\$100,000
20	Upper Meadow trail	Explore an alternate trail alignment to provide easier access to the 'upper meadow'	FY28	Staff time, Volunteers, Cost TBD