



# Skyline Area Master Plan

Moses Cortez

Parks and Trails Manager

# Ask

---

That the City Council adopt the Skyline Area Master Plan.

# Skyline Area Master Plan

---

- The Vision of the Skyline Area Master Plan ("The Plan") is to preserve the 292 acres of the Skyline area in a natural state for the benefit of current and future generations.
- The Plan is organized into five main sections:
  1. Vision and Framework
  2. Background and History
  3. Planning Process
  4. Recommendations
  5. Implementation Plan



# Background & History

---

- Comprised of 292 acres of land on the south-west border of Corona
- Most popular hiking destination in Corona and a gateway into the Cleveland National Forest
- Area originally planned for housing:
  - 63 single-family homes proposed
  - Blocked public access to trails
- The City purchased the land in 2020 to protect access and open space
- City Council adopted a Resolution on July 3, 2024, to reaffirm the City's intent to preserve Skyline in its natural state with minor amenities





# Planning Process

---

- The Plan development process included:
  - Inventory of existing trails
  - Citywide survey on desired amenities
  - Outreach events and meetings to discuss residents' priorities for Skyline
- Ensures The Plan represents the interests of the entire city and is shaped by community input and shared values

# Planning Process (cont.)

## Online Survey

- Conducted July 4 – August 30, 2024
- Survey available in one of three ways:
  1. Open Participation
  2. Random Sample
  3. Orchard Glen Residents
- **1,195 total participants** completed the survey.
- **Restrooms** were the most desired feature, followed by **trail maps**, **water fountain**, and **trail signage**.

What Amenities would help Skyline be even better?	Open	Random	Orchard Glen
	<b>1,108</b>	<b>67</b>	<b>20</b>
Restrooms	<b>62%</b>	67%	25%
Trail Maps	<b>57%</b>	67%	55%
Water Fountain	<b>58%</b>	47%	30%
Trail Signage	<b>55%</b>	56%	35%
Trees	<b>49%</b>	58%	40%
Shade Structures	<b>47%</b>	45%	20%
Seating	<b>44%</b>	44%	20%
More Hiking Trails	<b>41%</b>	41%	5%
Nearby Parking/More Parking	<b>37%</b>	39%	5%
Improved Security on Foothill	<b>36%</b>	41%	30%
Accessible Paths	<b>28%</b>	26%	10%
More Bike Trails	<b>23%</b>	26%	15%
Other	<b>13%</b>	12%	20%



## Recommendations

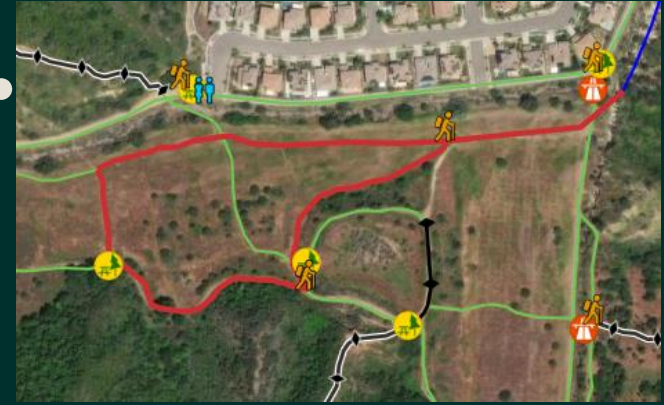
# Proposed Walking Circuits

- Convenient and easily accessible walking circuits
- Remain in natural state
- Serve as fire breaks

1.



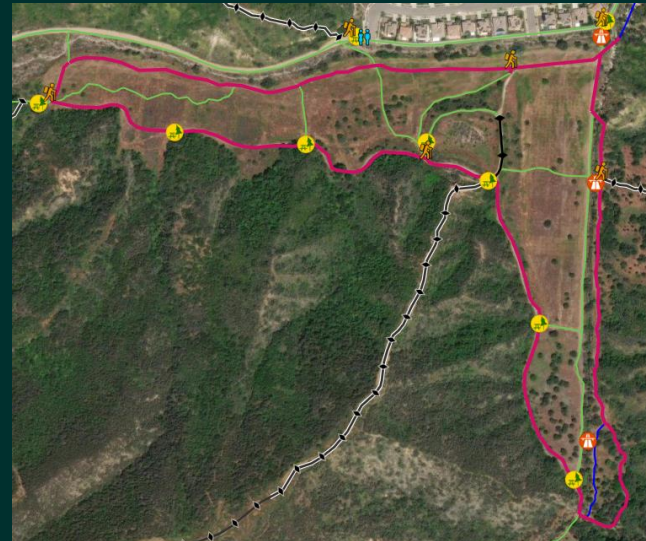
2.



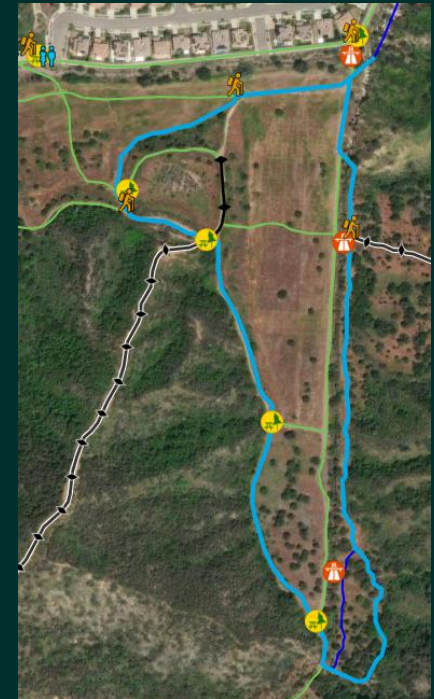
3.



4.



5.





## Recommendations (cont.)

# Kiosks

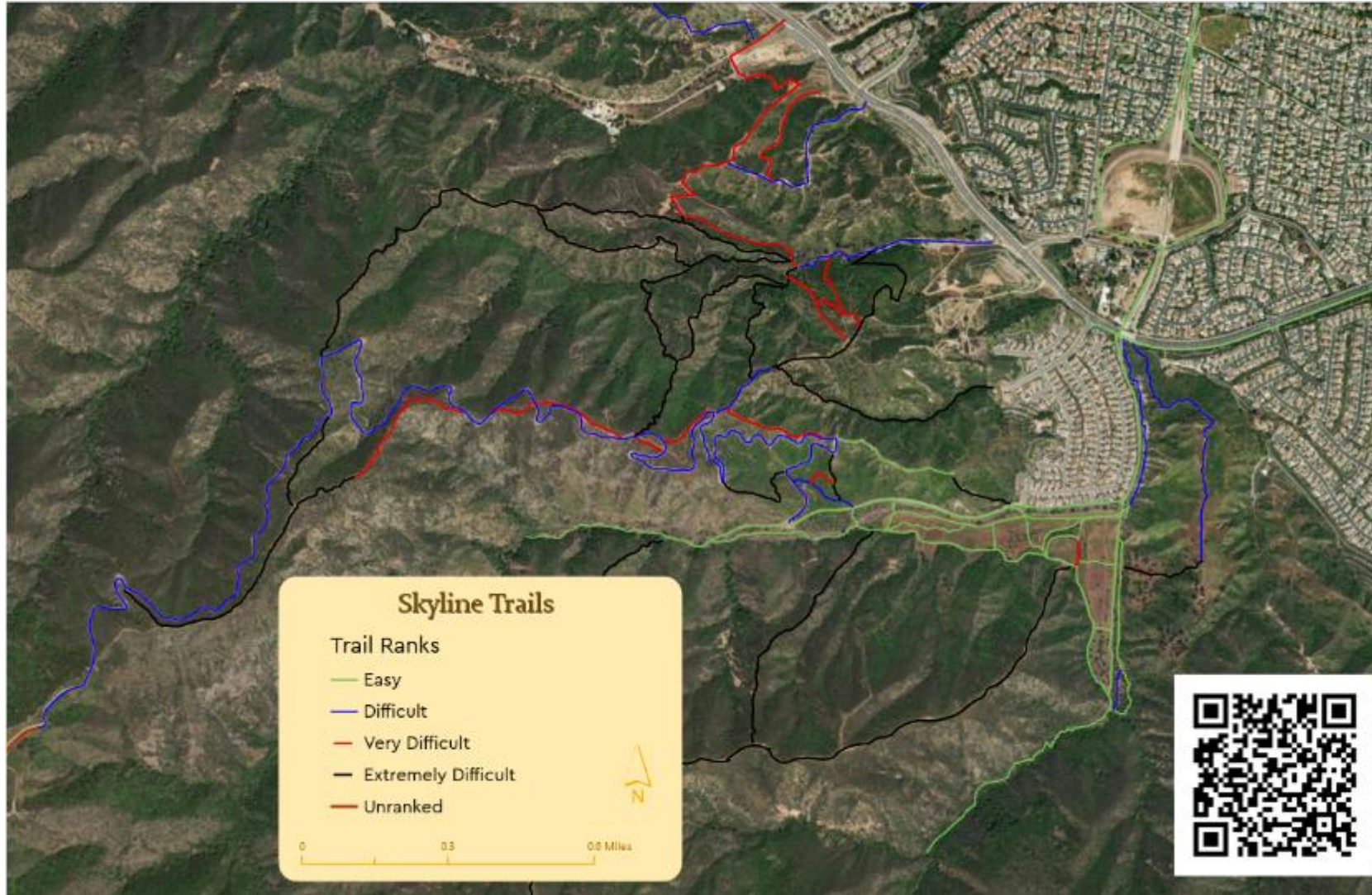
- Water awareness/hydration
- Rattlesnake safety
- Pack in/Pack out
- No Radios
- Dog waste
- Emergency Info

# Trail Signage

- Trail name
- Trail difficulty
- What is/not permitted
- Be aware of hikers/bikers



# Trail Map with IMBA Difficulty Ratings



- Will be available on all Trailhead Kiosks for a consistent trail user experience
  - QR Code displays this map on mobile devices

# Recommendations (cont.)

## Maintenance Standards

- Outlines ongoing maintenance functions throughout the year.

## Policies and Practices

- Provides objective guidelines for trail and open space uses.

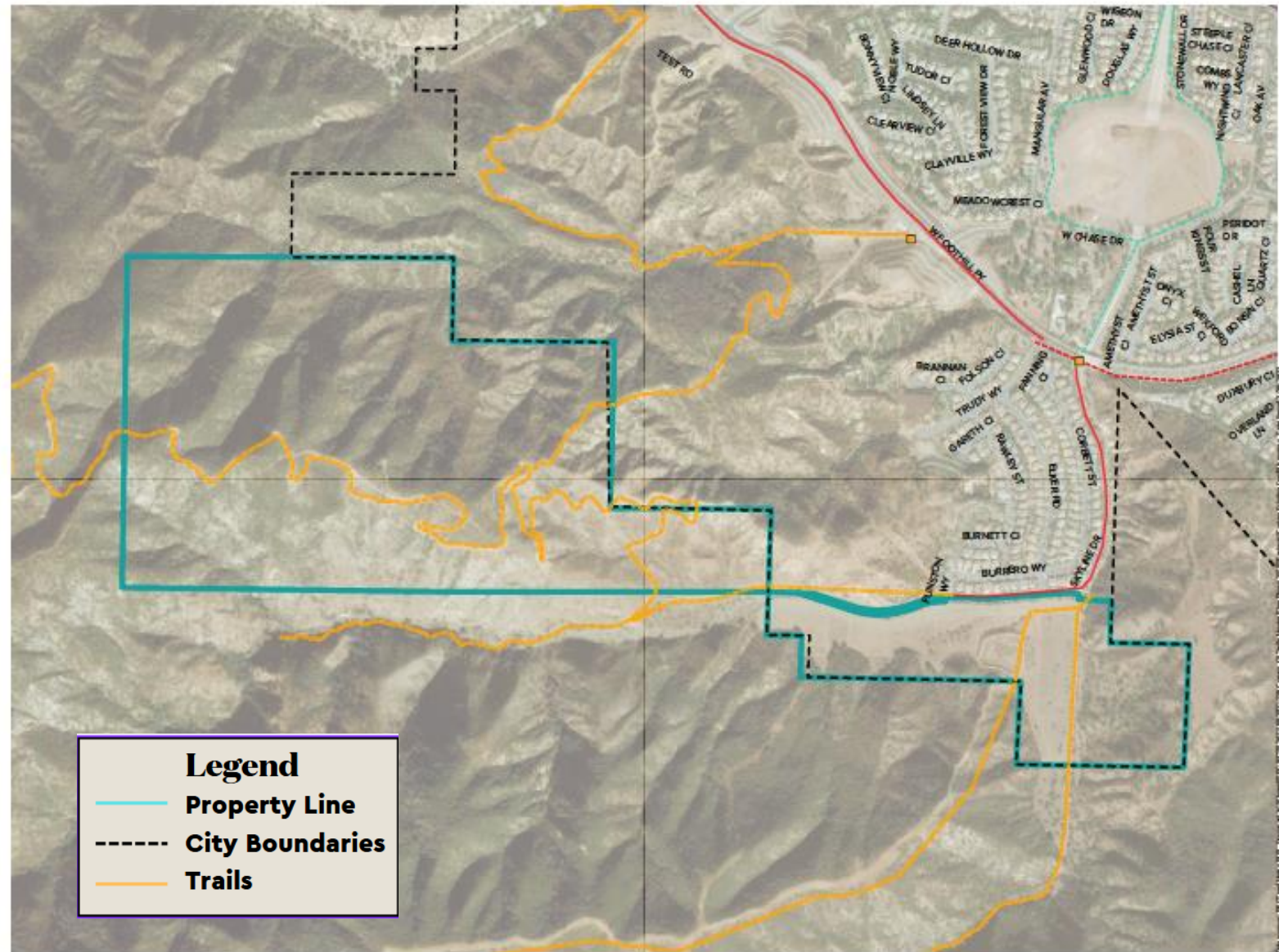
## Fire Prevention

- Ensures maintenance is performed in accordance with best practices and safety.

## Volunteer Opportunities:

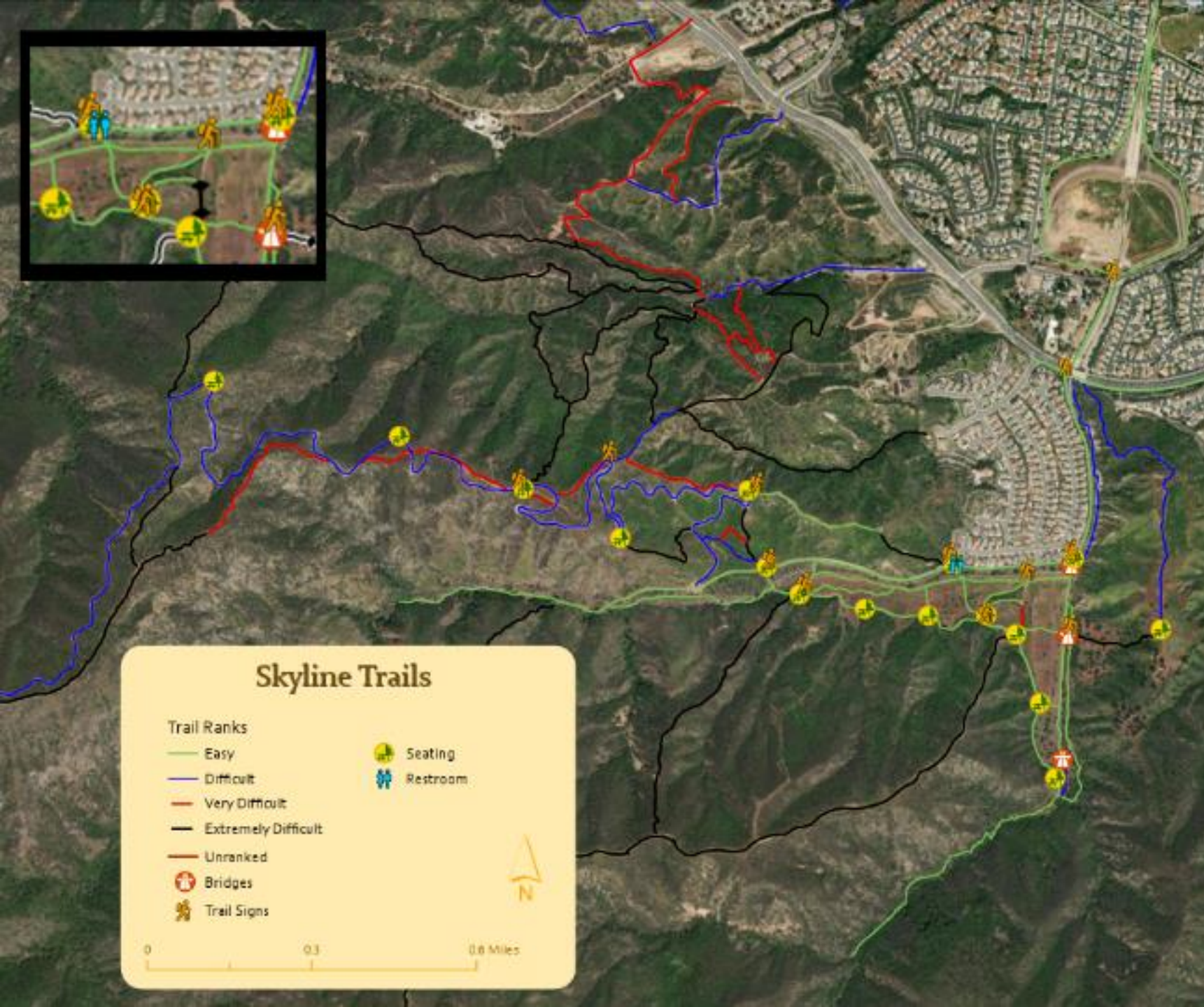
- Outlines opportunities for residents to give back to the Skyline Open space and to connect with staff and other trail users.

❖ Note: The Skyline Plan aligns with City's General Plan



# Implementation Plan

- Establish Trail Volunteers
- Area Map
- Safety Patrols
- Meadow Seating
- Trash Cans and Dog Bag Station
- Trails Day
- Skyline Bridge
- Trailhead Signage
- Maintenance Plan
- Shade Trees
- Trail Circuits
- Trail Signage
- Improved Security on Foothill
- Restroom and Water Fountain
- Seating
- Refurbish Bridges
- Easier Trails
- Crosswalk at Trudy



# Next Steps – 3 Year Timeline



1. Explore Volunteer Opportunities
2. Plan Projects for Future Fiscal Years
3. Pursue Grant Opportunities

# Ask

---

That the Council adopt the Skyline Area Master Plan.