

ISSUE STATUS

REV.	DATE	DESCRIPTION	BY
0	02/28/2023	90% ZD REVIEW	RL
1	06/02/2023	90% ZD DRM COMMENTS	RL
2	06/26/2023	100% ZD	RL
3	11/06/2023	ENCL. SIZE INCREASE	RL
4	12/18/2023	REVISED 90% ZD	RL
5	01/10/2024	100% ZD	RL
6	08/16/2024	CITY STAFF COMMENTS	RL
7	10/21/2024	COMBINED PERM & TEMP	RL

PLANCOM
TELECOMMUNICATIONS PROJECT MANAGEMENT

16776 BERNARDO CENTER DRIVE, UNIT 203
SAN DIEGO, CA 92128

PROPRIETARY INFORMATION

THE INFORMATION CONTAINED IN THIS SET OF DRAWINGS IS PROPRIETARY & CONFIDENTIAL TO VERIZON

verizon
15505 SAND CANYON AVENUE
BUILDING C
IRVINE, CA 92618

TEMESCANYON

PROJECT I.D. : 17276944
1660 LEESON LANE
CORONA, CA 92879

SHEET TITLE:
PERMANENT
SITE PLAN

A-0

KEYED NOTES:

- 1 REMOVE (E) VERIZON EQUIPMENT BUILDING INCLUDING ALL INTERIOR EQUIPMENT, CONCRETE FOUNDATIONS, PADS & LANDINGS (SHOWN DASHED)
- 2 REMOVE (E) VERIZON 62'-0" HIGH WOOD POLE WITH ANTENNAS, RRUS, MOUNTING BRACKETS & CABLES (SHOWN DASHED)
- 3 REMOVE (E) VERIZON CHAIN LINK FENCE ENCLOSURE AROUND WOOD POLE AND PARTIAL CHAIN LINK FENCE ON SOUTHEAST CORNER OF PROPERTY (SHOWN DASHED)
- 4 REROUTE (E) OVERHEAD VERIZON ELECTRICAL SERVICE FROM (E) UTILITY POLE UNDERGROUND TO PROPOSED TEMP LOCATION & TO (N) EQUIPMENT ENCLOSURE
- 5 REROUTE (E) OVERHEAD VERIZON FIBER SERVICE FROM (E) UTILITY POLE UNDERGROUND TO PROPOSED TEMP LOCATION & (N) EQUIPMENT ENCLOSURE
- 6 (E) OVERHEAD UTILITY LINES
- 7 (E) UTILITY POLE (TYPICAL)
- 8 (E) UTILITY POLE WITH TRANSFORMER
- 9 (E) WROUGHT IRON FENCE
- 10 (E) WROUGHT IRON ROLLING GATE
- 11 (E) CONCRETE DRIVEWAY
- 12 (E) CONCRETE CURB & GUTTER
- 13 (E) BUILDING
- 14 (E) 39'-4" TALL FACTORY TOWER (NOT TELECOM)
- 15 (E) ASPHALT PARKING LOT
- 16 (E) CONTOUR LINES @1'-0" INTERVALS
- 17 (E) CHAIN LINK FENCE & GATES WITH BARBED WIRE
- 18 (E) 26'-0" PRIVATE & LESSER RIGHTS STREET EASEMENT
- 19 (E) 10'-0" SCE UTILITIES EASEMENT
- 20 (E) CITY, SCE & SCGC UTILITIES EASEMENT
- 21 (E) WATER, SEWER, PUBLIC UTILITIES, INGRESS & EGRESS ACCESS AND DRAINAGE EASEMENT
- 22 (E) 20'-0" COVENANT AND AGREEMENT NON-BUILDABLE AREA/EASEMENT
- 23 (E) 6'-0" SCE UTILITIES EASEMENT
- 24 (E) SCE UTILITIES EASEMENT
- 25 (E) ASPHALT PAVING
- 26 (E) CONCRETE PAD
- 27 (E) UNPAVED COMPACTED EARTH (SHOWN SHADED)
- 28 (E) CONCRETE DRAINAGE SWALE
- 29 (E) GRAVEL & COMPACTED EARTH AROUND (E) VERIZON SHELTER & POLE
- 30 (E) DRAINAGE PATTERN
- 31 PROPERTY LINE, TYPICAL

NOTE: 15'-0" FRONT YARD SETBACK

NOTE: THERE IS NO SIDE YARD SETBACK

NOTE: THERE IS NO SIDE YARD SETBACK

NOTE: THERE IS NO REAR YARD SETBACK

APN: 107-320-015

SEE (PERMANENT) ENLARGED SITE PLAN SHEET A-1

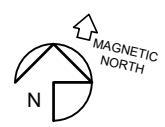
PERMANENT SITE
(N) VERIZON ANTENNAS & RRU RADIO UNITS MOUNTED ON A (N) 67'-0" HIGH TRI-TRUNK-EUCALYPTUS. SEE SHEETS A0 - A5.

PERMANENT SITE
(N) VERIZON 8'-0" TALL CONCRETE BLOCK EQUIPMENT ENCLOSURE WITH 6 GAUGE INDUSTRIAL COMMERCIAL CHAIN LINK LID WITH 2" MESH OPENING. SEE SHEETS A0 - A5.

TEMPORARY SITE
PROPOSED TEMPORARY VERIZON EQUIPMENT ON A CONCRETE BALLASTED BASE WITH A 62'-0" MONOPOLE. SEE SHEETS A6 - A12.

PERMANENT SITE PLAN

SCALE: 1" = 50'-0"
0' 25' 50' 100'



BETA SECTOR AZIMUTH 240°

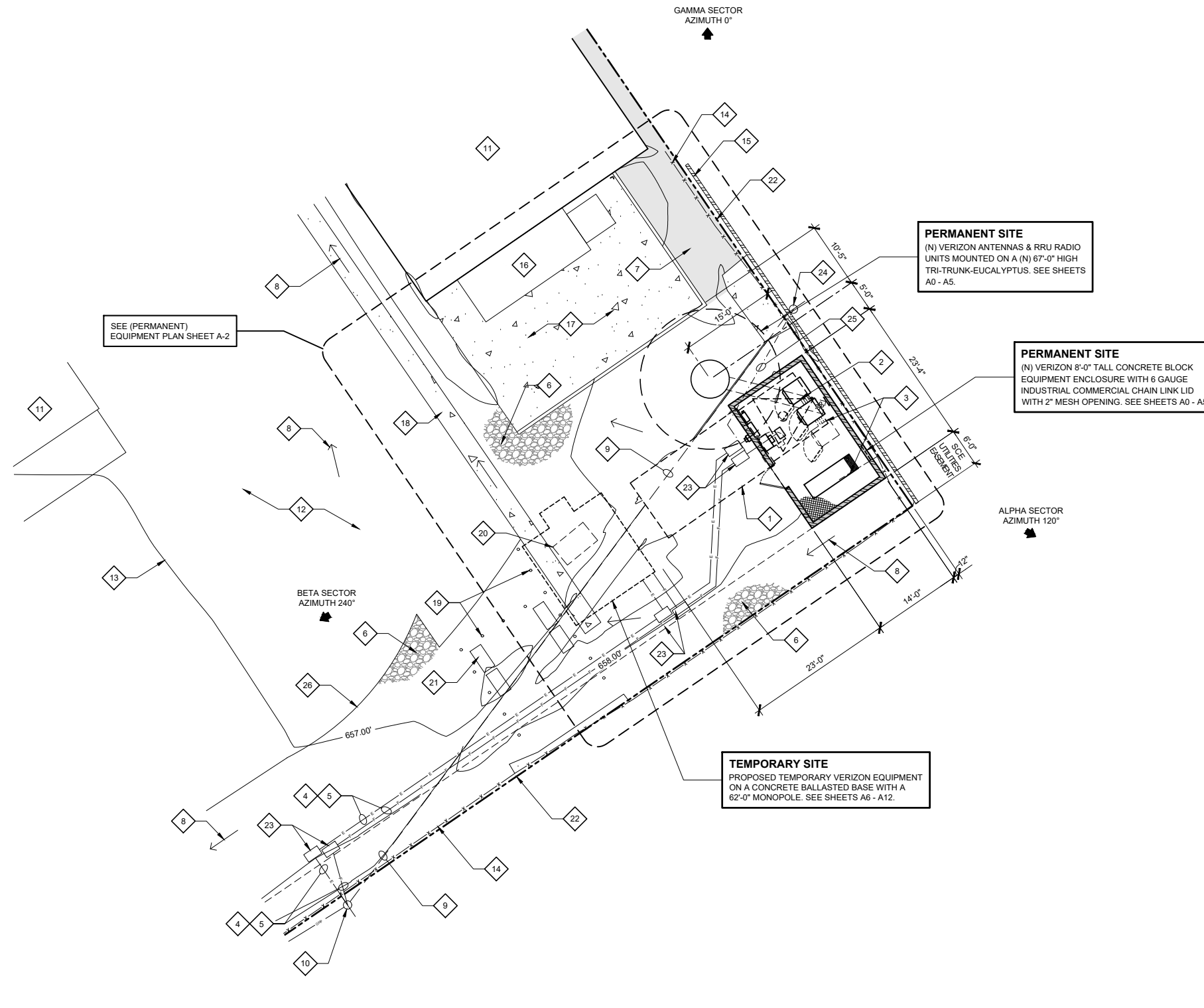
GAMMA SECTOR AZIMUTH 0°

ALPHA SECTOR AZIMUTH 120°

LEESON LN

EXHIBIT 2

BOUNDARY NOTE:
THE PROJECT BOUNDARY SHOWN ON THIS DRAWING IS APPROXIMATE AND IS SHOWN FOR REFERENCE ONLY. A COMPLETE BOUNDARY SURVEY WAS NOT PERFORMED.



PERMANENT ENLARGED SITE PLAN

SCALE: 1" = 10'-0"
 0" 5' 10' 20'



KEYED NOTES:

- 1 REMOVE (E) VERIZON EQUIPMENT BUILDING INCLUDING ALL INTERIOR EQUIPMENT, CONCRETE FOUNDATIONS, PADS & LANDINGS (SHOWN DASHED)
- 2 REMOVE (E) VERIZON 62'-0" HIGH WOOD POLE WITH ANTENNAS, RRUS, MOUNTING BRACKETS & CABLES (SHOWN DASHED)
- 3 REMOVE (E) VERIZON CHAIN LINK FENCE ENCLOSURE AROUND WOOD POLE AND PARTIAL CHAIN LINK FENCE ON SOUTHEAST CORNER OF PROPERTY (SHOWN DASHED)
- 4 REROUTE (E) OVERHEAD VERIZON ELECTRICAL SERVICE FROM (E) UTILITY POLE UNDERGROUND TO PROPOSED TEMP LOCATION & TO (N) EQUIPMENT ENCLOSURE
- 5 REROUTE (E) OVERHEAD VERIZON FIBER SERVICE FROM (E) UTILITY POLE UNDERGROUND TO PROPOSED TEMP LOCATION & (N) EQUIPMENT ENCLOSURE
- 6 (E) GRAVEL & COMPACTED EARTH AROUND (E) VERIZON SHELTER & POLE
- 7 (E) UNPAVED COMPACTED EARTH (SHOWN SHADED)
- 8 (E) DRAINAGE PATTERN
- 9 (E) OVERHEAD UTILITY LINES TO BE RELOCATED UNDERGROUND
- 10 P.O.C. FOR BOTH POWER & FIBER AT (E) UTILITY POLE #1822301E. VERTICAL CONDUIT DROP DOWN POLE TO JOINT TRENCH.
- 11 (E) BUILDING
- 12 (E) ASPHALT DRIVEWAY "NO PARKING" FIRE LANE STRIPES
- 13 (E) CONTOUR LINES @1'-0" INTERVALS
- 14 (E) CHAIN LINK FENCE WITH BARBED WIRE TO REMAIN
- 15 (E) CONCRETE BLOCK WALL TO REMAIN
- 16 (E) COMMERCIAL TRASH COMPACTOR
- 17 (E) CONCRETE LOADING PAD
- 18 (E) CONCRETE DRAINAGE SWALE
- 19 (E) CONCRETE FILLED BOLLARDS TO REMAIN (TYPICAL)
- 20 (E) ABANDONED FUEL TANK TO BE REMOVED BY OWNER (SHOWN DASHED)
- 21 (E) PROPANE TANKS INSIDE METAL STORAGE CAGES TO REMAIN
- 22 PROPERTY LINE, TYPICAL
- 23 (N) 17" x 30" HANDHOLES WITH CONCRETE COVER (3) FOR FIBER, (3) FOR POWER, (6) TOTAL
- 24 (E) LIGHT STANDARD TO REMAIN
- 25 (N) CONDUIT & CONDUCTORS IN TRENCH TO (E) LIGHT STANDARD < 24
- 26 EDGE OF ASPHALT PAVING

ISSUE STATUS

REV.	DATE	DESCRIPTION	BY
0	02/28/2023	90% ZD REVIEW	RL
1	06/02/2023	90% ZD DRM COMMENTS	RL
2	06/26/2023	100% ZD	RL
3	11/06/2032	ENCL. SIZE INCREASE	RL
4	12/18/2023	REVISED 90% ZD	RL
5	01/10/2024	100% ZD	RL
6	08/16/2024	CITY STAFF COMMENTS	RL
7	10/21/2024	COMBINED PERM & TEMP	RL

PLANCOM

TELECOMMUNICATIONS PROJECT MANAGEMENT

16776 BERNARDO CENTER DRIVE, UNIT 203
 SAN DIEGO, CA 92128

PROPRIETARY INFORMATION

THE INFORMATION CONTAINED IN THIS SET OF DRAWINGS IS PROPRIETARY & CONFIDENTIAL TO VERIZON

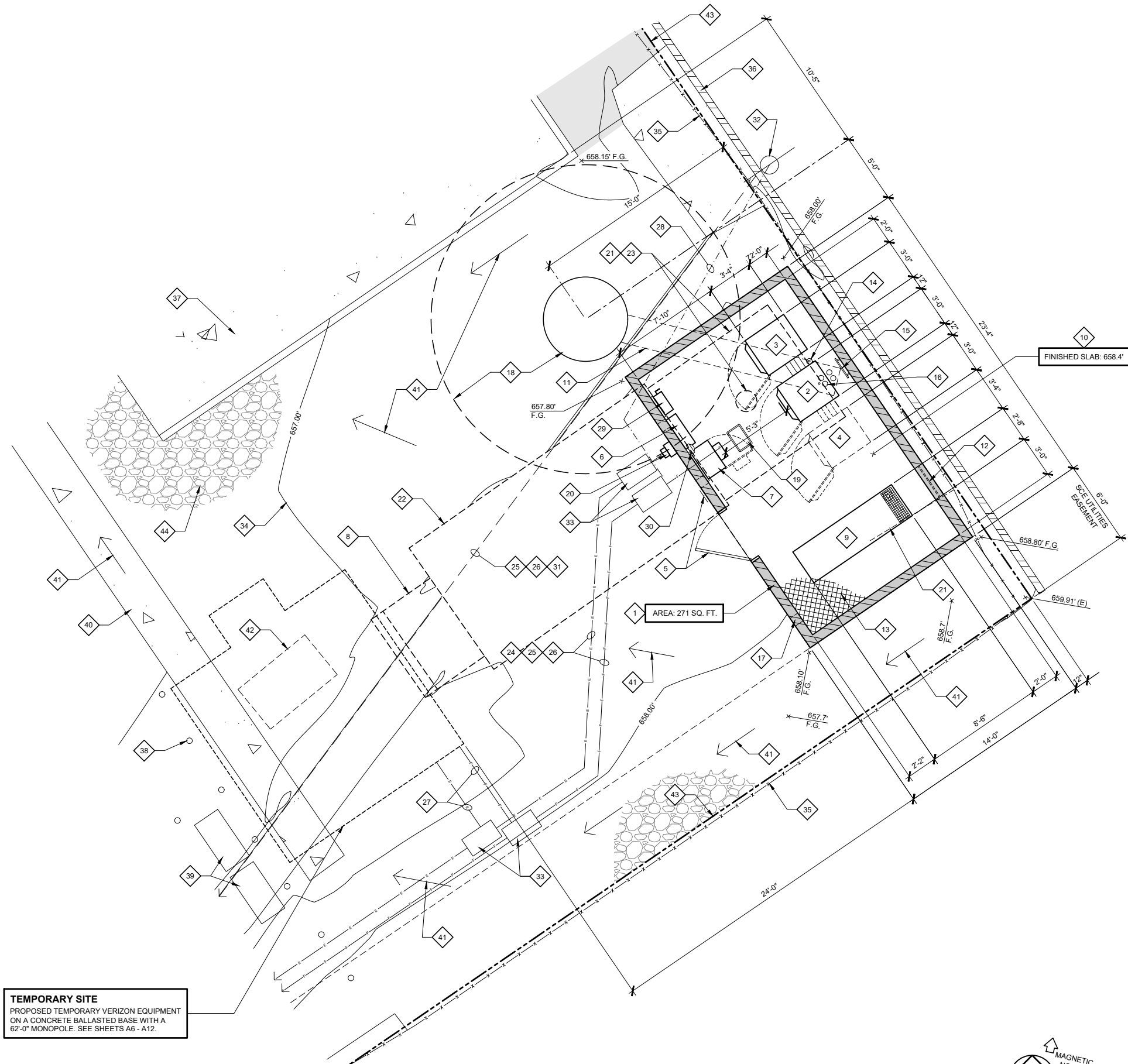
verizon
 15505 SAND CANYON AVENUE
 BUILDING C
 IRVINE, CA 92618

TEMESCANYON

PROJECT I.D. : 17276944
 1660 LEESON LANE
 CORONA, CA 92879

SHEET TITLE:
 PERMANENT ENLARGED SITE PLAN

A-1



TEMPORARY SITE
 PROPOSED TEMPORARY VERIZON EQUIPMENT
 ON A CONCRETE BALLASTED BASE WITH A
 62'-0" MONOPOLE. SEE SHEETS A6 - A12.

PERMANENT EQUIPMENT PLAN

SCALE: 1/4" = 1'-0"
 0" 2' 4' 8'



KEYED NOTES:

- 1 (N) PERMANENT VERIZON 8'-0" TALL CONCRETE BLOCK EQUIPMENT ENCLOSURE
- 2 (N) VERIZON BATTERY CABINET. CABINET SHALL BE "HARDENED" WITH STAINLESS STEEL PROTECTION ASSEMBLY WITH MASTER KEYED HIDDEN SHACKLE PADLOCK WITH HIGH SECURITY HASP PER NETWORK ASSURANCE
- 3 (N) VERIZON POWER PLANT / EQUIPMENT CABINET WITH BATTERIES IN THE BOTTOM. CABINET SHALL BE "HARDENED" WITH STAINLESS STEEL PROTECTION ASSEMBLY WITH MASTER KEYED HIDDEN SHACKLE PADLOCK WITH HIGH SECURITY HASP PER NETWORK ASSURANCE
- 4 FUTURE VERIZON CABINET (SHOWN DASHED)
- 5 (N) 4'-0" WIDE x 8'-0" HIGH STEEL PICKET GATE WITH VERIZON SIGNAGE ON ADJACENT WALL. SEE DETAILS
- 6 (N) VERIZON WALL MOUNTED INTEGRATED LOAD CENTER (ILC)
- 7 (N) VERIZON WALL MOUNTED FIBER CABINET
- 8 REMOVE (E) CONCRETE LANDING & STEPS
- 9 (N) VERIZON 30KW AC STAND-BY GENERATOR WITH 221 GALLON SEISMIC DOUBLE WALL DIESEL FUEL TANK
- 10 (N) CONCRETE SLAB
- 11 (N) VERIZON CABLE TRENCH TO TRI-TRUNK-EUCALYPTUS (SHOWN DASHED)
- 12 2'-8" WIDE x 4'-0" HIGH VENTILATION OPENING WITH STEEL FRAME & PICKETS @ 4" O.C.
- 13 (N) 6 GAUGE INDUSTRIAL COMMERCIAL CHAIN LINK LID WITH 2" MESH OPENING
- 14 (N) E911 GPS ANTENNA MOUNTED TO (N) EQUIPMENT CABINET EXTEND MINIMUM 12" ABOVE TOP OF WALL
- 15 (N) MAIN GROUND BUS BAR MOUNTED TO INSIDE FACE OF CONCRETE BLOCK ENCLOSURE WALL
- 16 (N) (4) 4" Ø CABLE CONDUIT & (1) 1-1/2" Ø CONDUIT FOR GROUND
- 17 PROVIDE 4" x 8" OPENING AT BASE OF WALL FOR DRAINAGE (TYPICAL OF 3)
- 18 (N) PERMANENT VERIZON 67'-0" HIGH TRI-TRUNK-EUCALYPTUS & FOOTING. SEE SHEET A-3 FOR ANTENNA PLAN & TRI-TRUNK-EUCALYPTUS ELEVATION
- 19 (N) 17" x 30" FIBER HAND HOLE WITH BOLT-DOWN CONCRETE COVER
- 20 RELOCATED SCE ELECTRICAL METER
- 21 REMOVE (E) VERIZON CHAIN LINK FENCE ENCLOSURE AROUND WOOD POLE AND PARTIAL CHAIN LINK FENCE ON SOUTHEAST CORNER OF PROPERTY (SHOWN DASHED)
- 22 REMOVE (E) VERIZON EQUIPMENT BUILDING INCLUDING ALL INTERIOR EQUIPMENT, CONCRETE FOUNDATIONS, PADS & LANDINGS (SHOWN DASHED)
- 23 REMOVE (E) VERIZON 62'-0" HIGH WOOD POLE WITH ANTENNAS, RRUS, MOUNTING BRACKETS & CABLES (SHOWN DASHED)
- 24 (N) TRENCH FOR POWER & FIBER
- 25 REROUTE (E) OVERHEAD VERIZON ELECTRICAL SERVICE FROM (E) UTILITY POLE UNDERGROUND TO (TEMP) & TO (N) EQUIPMENT ENCLOSURE
- 26 REROUTE (E) OVERHEAD VERIZON FIBER SERVICE FROM (E) UTILITY POLE UNDERGROUND TO (TEMP) & (N) EQUIPMENT ENCLOSURE
- 27 UTILITY CONDUIT IN TRENCH FOR TEMP SITE
- 28 (N) CONDUIT & CONDUCTORS IN TRENCH TO (E) LIGHT STANDARD
- 29 (N) VERIZON WALL MOUNTED FUSED DISCONNECT SWITCH
- 30 (N) SERVICE LIGHT FIXTURE
- 31 (E) OVERHEAD UTILITY LINES
- 32 (E) LIGHT STANDARD TO REMAIN
- 33 (N) 17" x 30" HANDHOLES WITH CONCRETE COVER (3) FOR FIBER, (3) FOR POWER, (6) TOTAL
- 34 (E) CONTOUR LINES @1'-0" INTERVALS
- 35 (E) CHAIN LINK FENCE WITH BARBED WIRE TO REMAIN
- 36 (E) CONCRETE BLOCK WALL TO REMAIN
- 37 (E) CONCRETE LOADING PAD TO REMAIN
- 38 (E) CONCRETE FILLED BOLLARDS TO REMAIN (TYPICAL)
- 39 (E) PROPANE TANKS INSIDE METAL STORAGE CAGES TO REMAIN
- 40 (E) CONCRETE DRAINAGE SWALE
- 41 (E) DRAINAGE PATTERN
- 42 (E) ABANDONED FUEL TANK TO BE REMOVED BY OWNER (SHOWN DASHED)
- 43 PROPERTY LINE, TYPICAL
- 44 (E) GRAVEL & COMPACTED EARTH AROUND (E) VERIZON SHELTER & POLE

ISSUE STATUS

REV.	DATE	DESCRIPTION	BY
0	02/28/2023	90% ZD REVIEW	RL
1	06/02/2023	90% ZD DRM COMMENTS	RL
2	06/26/2023	100% ZD	RL
3	11/06/2023	ENCL. SIZE INCREASE	RL
4	12/18/2023	REVISED 90% ZD	RL
5	01/10/2024	100% ZD	RL
6	08/16/2024	CITY STAFF COMMENTS	RL
7	10/21/2024	COMBINED PERM & TEMP	RL

PLANCOM

TELECOMMUNICATIONS PROJECT MANAGEMENT

16776 BERNARDO CENTER DRIVE, UNIT 203
 SAN DIEGO, CA 92128

PROPRIETARY INFORMATION

THE INFORMATION CONTAINED IN THIS SET OF DRAWINGS IS PROPRIETARY & CONFIDENTIAL TO VERIZON

verizon
 15505 SAND CANYON AVENUE
 BUILDING C
 IRVINE, CA 92618

TEMESCANYON

PROJECT I.D. : 17276944
 1660 LEESON LANE
 CORONA, CA 92879

SHEET TITLE:
 PERMANENT
 EQUIPMENT PLAN

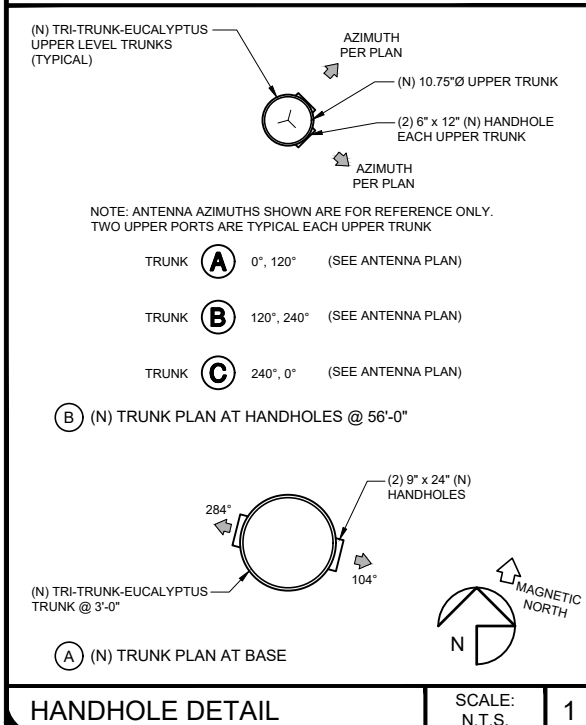
A-2

RFDS T.B.D.

SECTOR	DIRECTION	AZMUTH	MODEL	SIZE	RAD CENTER	RADIO TYPE	NUMBER OF CABLES PER SECTOR	COAX. CABLE LENGTH (+/- 5)	SURGE SUPPRESSOR	JUMPER LENGTH (+/- 3)
ALPHA1	SOUTHEAST	120°	ERICSSON: KRE105281/1	8.4" L x 7.9" W x 4.9" D	61'-6"	INTEGRAL WITH ANTENNA	(1) 6 X 12 HYBRID CABLE	85'-0"	(1)	6'-0"
ALPHA2			COMMSCOPE: NHH-65C-R2B	96.0" L X 11.9" W X 7.1" D	58'-0"	(1) RRU 4890				
ALPHA3			COMMSCOPE: NHH-65C-R2B	96.0" L X 11.9" W X 7.1" D	58'-0"	(1) RRU 4490				
ALPHA4			ERICSSON: AIR6419	31.3" L x 16.1" W x 9.8" D	60'-8"	INTEGRAL WITH ANTENNA				
BETA1	SOUTHWEST	240°	ERICSSON: KRE105281/1	8.4" L x 7.9" W x 4.9" D	61'-6"	INTEGRAL WITH ANTENNA	(1) 6 X 12 HYBRID CABLE	85'-0"	(1)	6'-0"
BETA2			COMMSCOPE: NHH-65C-R2B	96.0" L X 11.9" W X 7.1" D	58'-0"	(1) RRU 4890				
BETA3			COMMSCOPE: NHH-65C-R2B	96.0" L X 11.9" W X 7.1" D	58'-0"	(1) RRU 4490				
BETA4			ERICSSON: AIR6419	31.3" L x 16.1" W x 9.8" D	60'-8"	INTEGRAL WITH ANTENNA				
GAMMA1	NORTH	0°	ERICSSON: KRE105281/1	8.4" L x 7.9" W x 4.9" D	61'-6"	INTEGRAL WITH ANTENNA	(1) 6 X 12 HYBRID CABLE	85'-0"	(1)	6'-0"
GAMMA2			COMMSCOPE: NHH-65C-R2B	96.0" L X 11.9" W X 7.1" D	58'-0"	(1) RRU 4890				
GAMMA3			COMMSCOPE: NHH-65C-R2B	96.0" L X 11.9" W X 7.1" D	58'-0"	(1) RRU 4490				
GAMMA4			ERICSSON: AIR6419	31.3" L x 16.1" W x 9.8" D	60'-8"	INTEGRAL WITH ANTENNA				
MICROWAVE	TBD	TBD	TBD	4'-0"Ø	48'-0"					32'-0"

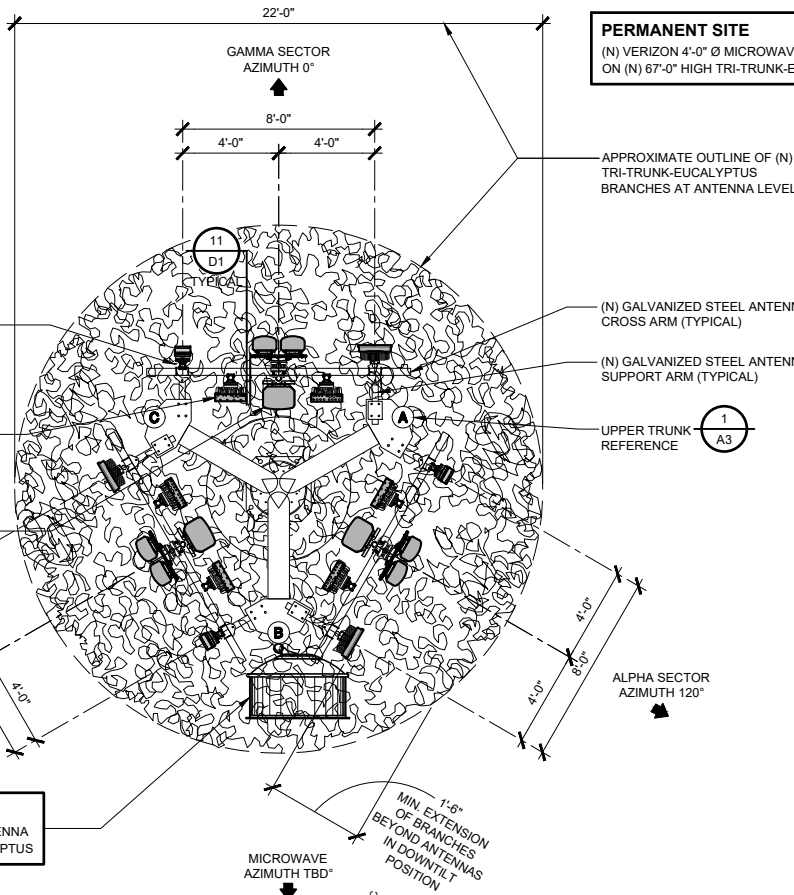
NOTES:

- 1 INSTALL (16) ANTENNAS: (3) ERICSSON KRE105281/1: 8.4" LENGTH X 7.9" WIDE X 4.9" DEEP, WEIGHT: 11.0 LBS (6) COMMSCOPE NHH-65C-R2B: 96.0" LENGTH X 11.9" WIDE X 7.1" DEEP, WEIGHT: 51.6 LBS (3) ERICSSON AIR6419: 31.3" LENGTH X 16.1" WIDE X 9.8" DEEP, WEIGHT: 71.0 LBS
- 2 INSTALL (1) 6 x 12 HYBRID FIBER POWER CABLE FOR EACH SECTOR (TOTAL OF 3)
- 3 INSTALL (1) DEMARCATION JUNCTION BOX (RAYCAP SURGE SUPPRESSOR) FOR EACH SECTOR (TOTAL OF 3) SEE DETAIL
- 4 INSTALL (2) RRU UNITS FOR EACH SECTOR, (TOTAL OF 6). SEE DETAILS
- 5 4408-B48 RRU UNITS ARE INTEGRAL WITH KRE105281/1 ANTENNAS
- 6 RRU UNITS AT ERICSSON AIR6419 ARE INTEGRAL WITH ANTENNAS

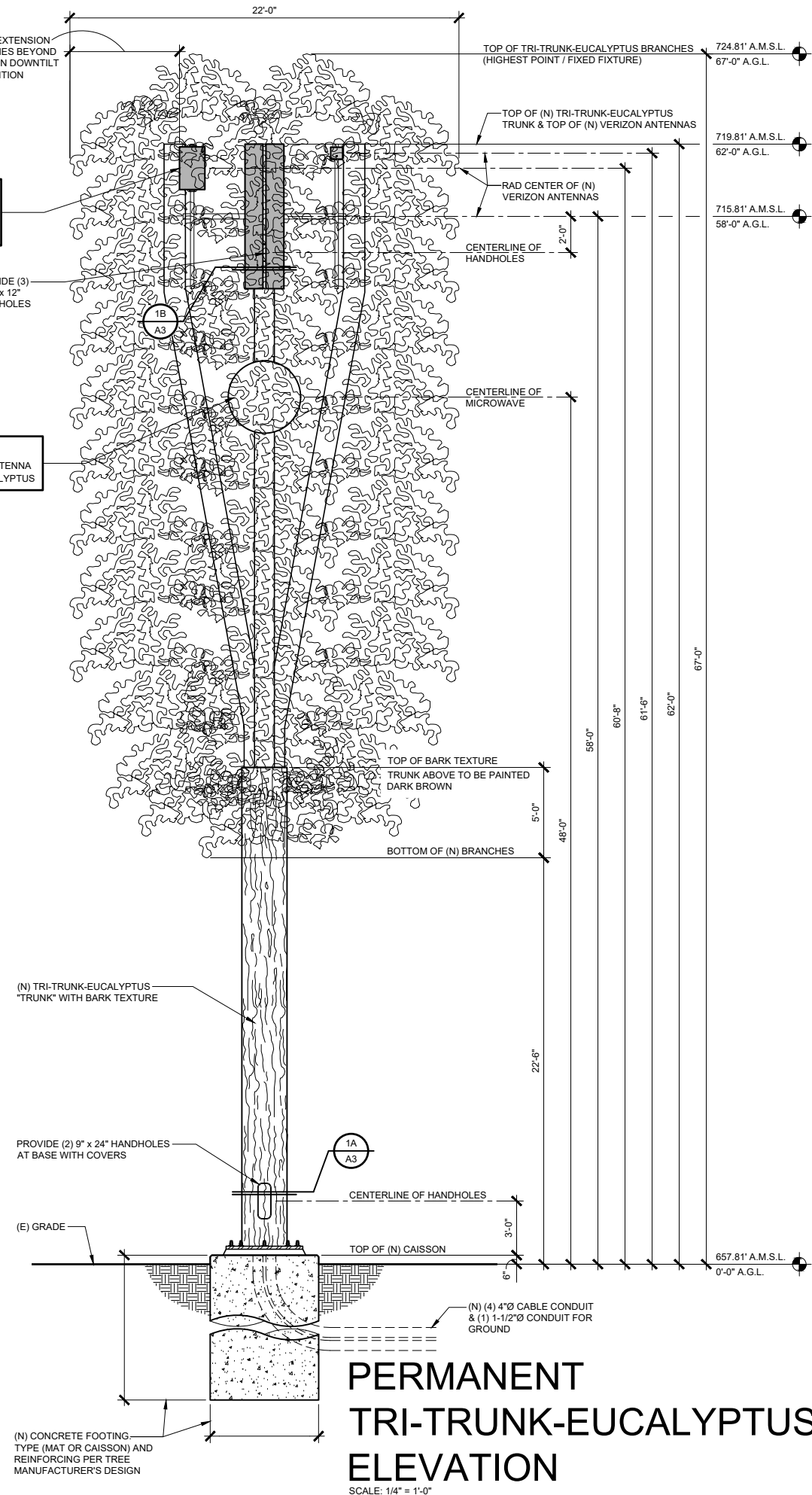


PERMANENT ANTENNA PLAN

SCALE: 1/4" = 1'-0"



- ANTENNA & EQUIPMENT CAMOUFLAGE NOTES:**
- COMMSCOPE NHH-65C-R2B AND ERICSSON KRE 105281/1 ANTENNAS MAY BE COVERED BY RF TRANSPARENT NEEDLE SOCKS.
 - RRU 4449 & 8843 UNITS MAY BE COVERED BY RF TRANSPARENT NEEDLE SOCKS. BUT, MAY NOT BE PAINTED.
 - RAYCAP SURGE SUPPRESSORS MAY BE PAINTED TO MATCH DOMINANT COLOR OF TREE FOLIAGE.
 - ERICSSON AIR6449 ANTENNAS MAY ONLY BE COVERED WITH 3M FILM IN A COLOR THAT MATCHES THE DOMINANT TREE COLOR. ONLY THE FACE AND SIDES MAY RECEIVE FILM. THE BACK OF THESE ANTENNAS MAY NOT BE COVERED, FILMED OR PAINTED.
 - ALL EXPOSED CABLES, BRACKETS & SUPPORTS SHALL BE PAINTED TO MATCH FAUX TREE FOLIAGE.



ISSUE STATUS

REV.	DATE	DESCRIPTION	BY
0	02/28/2023	90% ZD REVIEW	RL
1	06/02/2023	90% ZD DRM COMMENTS	RL
2	06/26/2023	100% ZD	RL
3	11/06/2023	ENCL. SIZE INCREASE	RL
4	12/18/2023	REVISED 90% ZD	RL
5	01/10/2024	100% ZD	RL
6	08/16/2024	CITY STAFF COMMENTS	RL
7	10/21/2024	COMBINED PERM & TEMP	RL

PLANCOM
TELECOMMUNICATIONS PROJECT MANAGEMENT

16776 BERNARDO CENTER DRIVE, UNIT 203
SAN DIEGO, CA 92128

PROPRIETARY INFORMATION

THE INFORMATION CONTAINED IN THIS SET OF DRAWINGS IS PROPRIETARY & CONFIDENTIAL TO VERIZON

verizon

15505 SAND CANYON AVENUE
BUILDING C
IRVINE, CA 92618

TEMESCANYON

PROJECT I.D. : 17276944
1660 LEESON LANE
CORONA, CA 92879

SHEET TITLE:
PERMANENT TRI-TRUNK-EUCALYPTUS ELEVATION & ANTENNA PLAN

A-3

ISSUE STATUS

REV.	DATE	DESCRIPTION	BY
0	02/28/2023	90% ZD REVIEW	RL
1	06/02/2023	90% ZD DRM COMMENTS	RL
2	06/26/2023	100% ZD	RL
3	11/06/2023	ENCL. SIZE INCREASE	RL
4	12/18/2023	REVISED 90% ZD	RL
5	01/10/2024	100% ZD	RL
6	08/16/2024	CITY STAFF COMMENTS	RL
7	10/21/2024	COMBINED PERM & TEMP	RL

PLANCOM

TELECOMMUNICATIONS PROJECT MANAGEMENT

16776 BERNARDO CENTER DRIVE, UNIT 203
SAN DIEGO, CA 92128

PROPRIETARY INFORMATION

THE INFORMATION CONTAINED IN THIS SET OF DRAWINGS IS PROPRIETARY & CONFIDENTIAL TO VERIZON

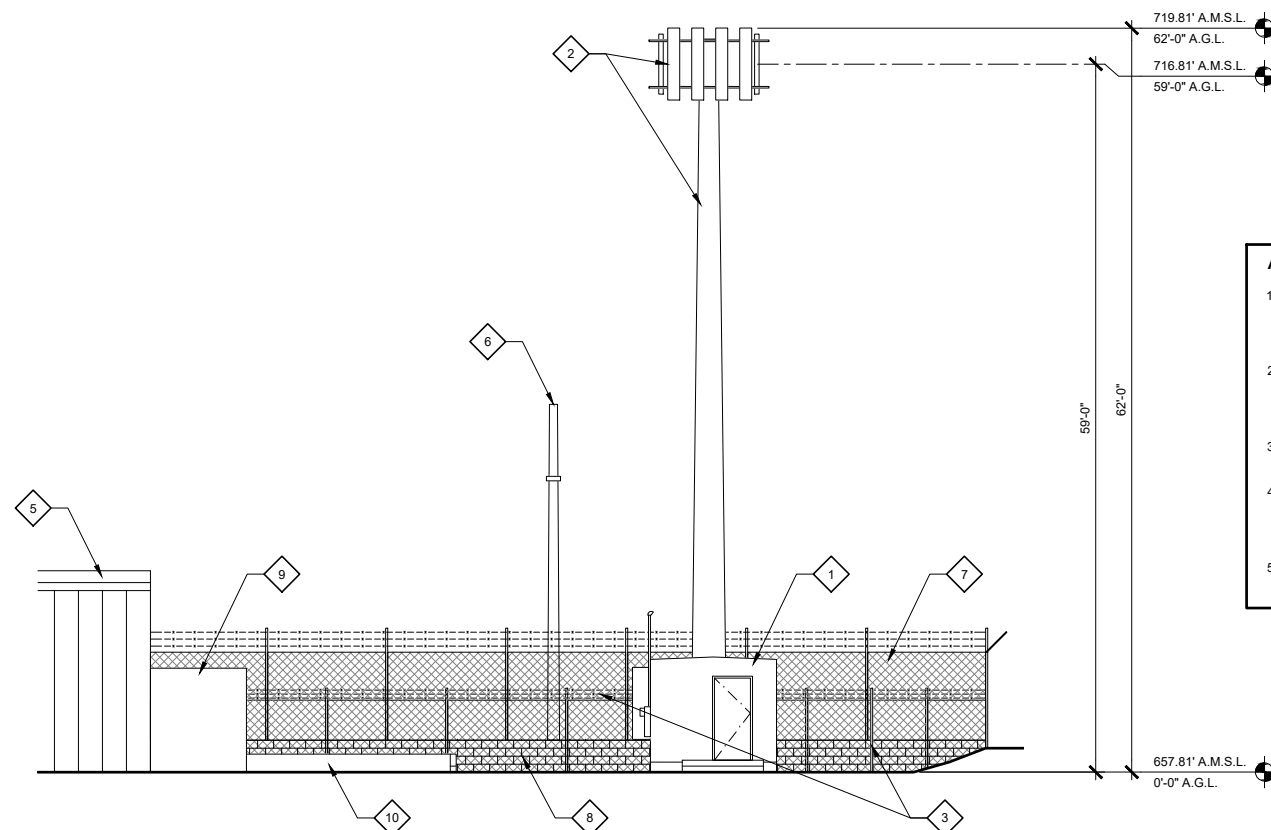
verizon
15505 SAND CANYON AVENUE
BUILDING C
IRVINE, CA 92618

TEMESCANYON

PROJECT I.D. : 17276944
1660 LEESON LANE
CORONA, CA 92879

SHEET TITLE:
PERMANENT
EXTERIOR ELEVATIONS

A-4



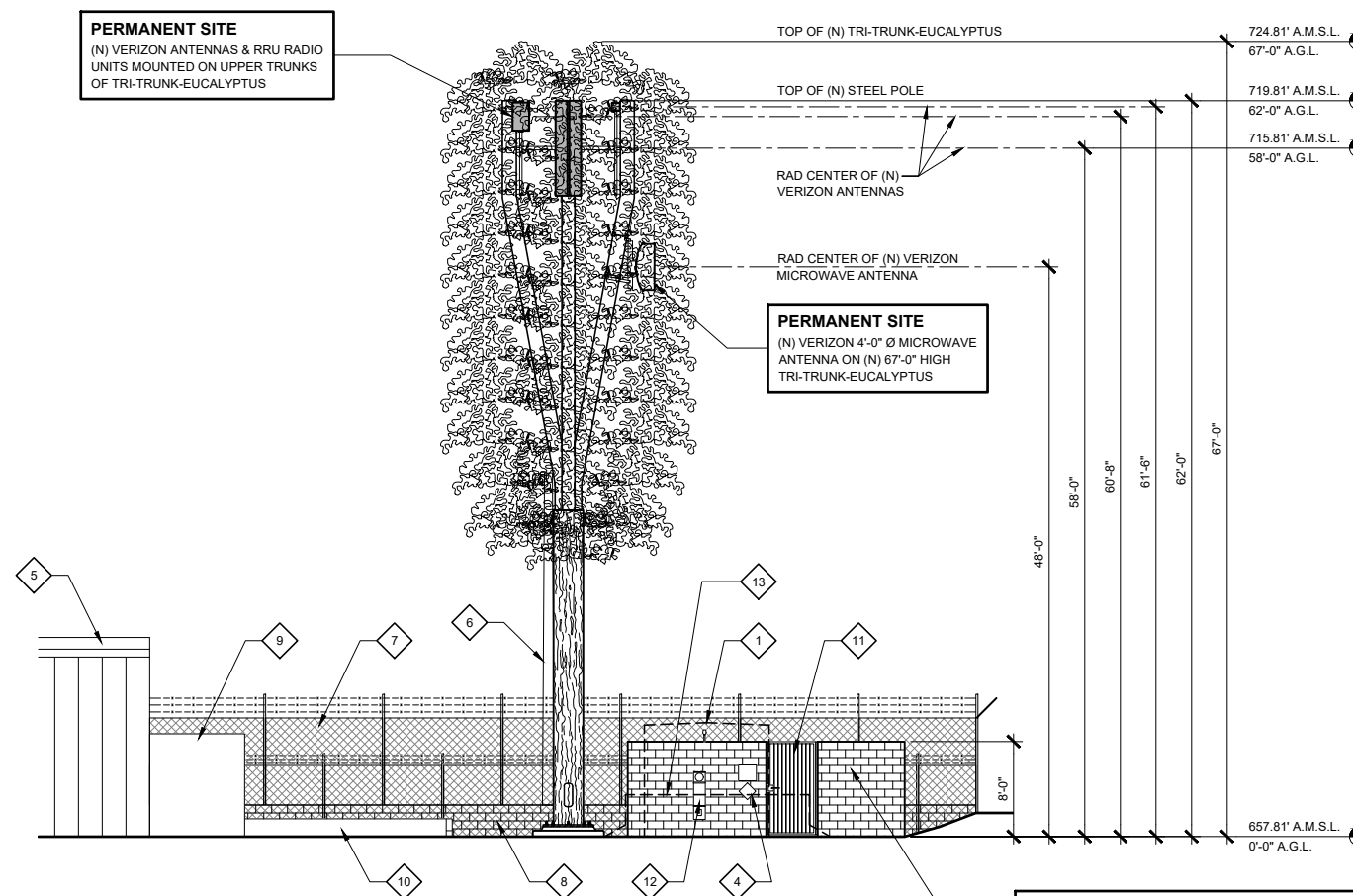
(E) WEST ELEVATION

SCALE: 1/8" = 1'-0"

- ANTENNA & EQUIPMENT CAMOUFLAGE NOTES:**
- COMMSCOPE NHH-65C-R2B AND ERICSSON KRE 105281/1 ANTENNAS MAY BE COVERED BY RF TRANSPARENT NEEDLE SOCKS.
 - RRU 4449 & 8843 UNITS MAY BE COVERED BY RF TRANSPARENT NEEDLE SOCKS. BUT, MAY NOT BE PAINTED.
 - RAYCAP SURGE SUPPRESSORS MAY BE PAINTED TO MATCH DOMINANT COLOR OF TREE FOLIAGE.
 - ERICSSON AIR6449 ANTENNAS MAY ONLY BE COVERED WITH 3M FILM IN A COLOR THAT MATCHES THE DOMINANT TREE COLOR. ONLY THE FACE AND SIDES MAY RECEIVE FILM. THE BACK OF THESE ANTENNAS MAY NOT BE COVERED, FILMED OR PAINTED.
 - ALL EXPOSED CABLES, BRACKETS & SUPPORTS SHALL BE PAINTED TO MATCH FAUX TREE FOLIAGE.

KEYED NOTES:

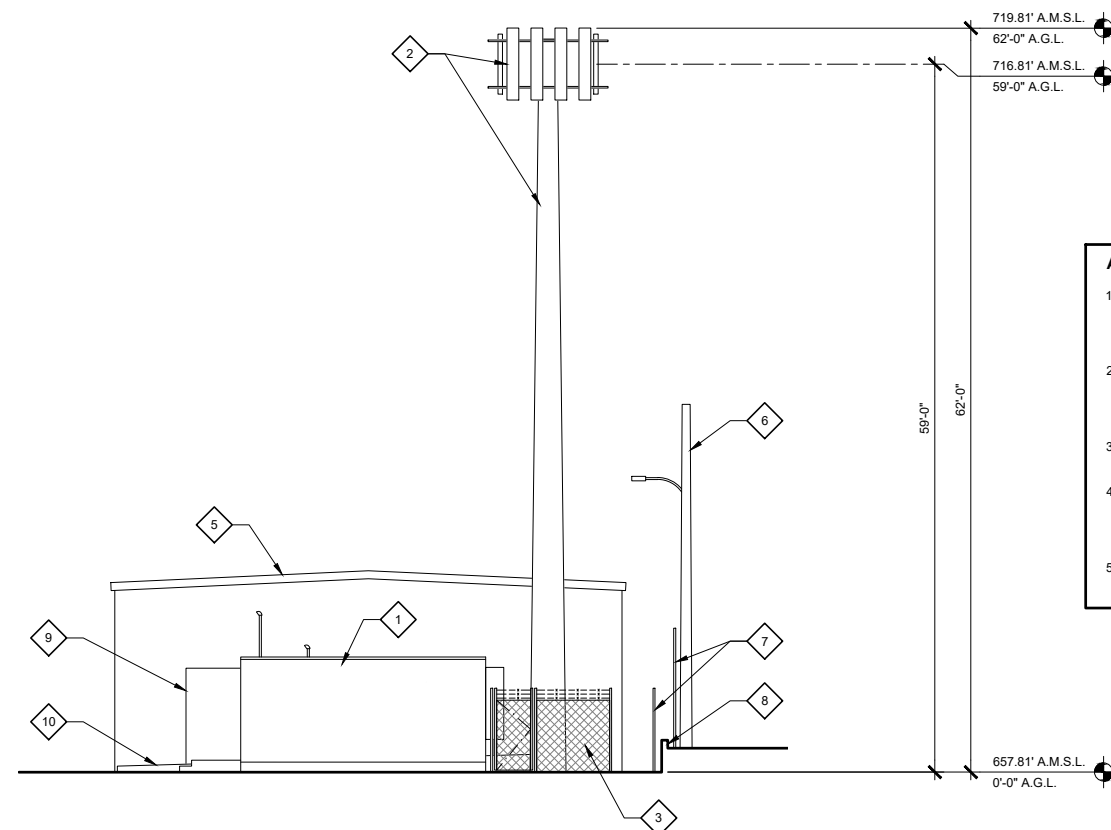
- REMOVE (E) VERIZON EQUIPMENT BUILDING INCLUDING ALL INTERIOR EQUIPMENT, CONCRETE FOUNDATIONS, PADS & LANDINGS
- REMOVE (E) VERIZON 62'-0" HIGH WOOD POLE WITH ANTENNAS, RRUS, MOUNTING BRACKETS & CABLES
- REMOVE (E) VERIZON CHAIN LINK FENCE ENCLOSURE AROUND WOOD POLE AND PARTIAL CHAIN LINK FENCE ON SOUTHEAST CORNER OF PROPERTY
- (N) VERIZON SIGNAGE
- (E) BUILDING
- (E) LIGHT STANDARD TO REMAIN
- (E) CHAIN LINK FENCE WITH BARBED WIRE BEYOND (TO REMAIN)
- (E) CONCRETE BLOCK WALL TO REMAIN
- (E) COMMERCIAL TRASH COMPACTOR
- (E) CONCRETE LOADING PAD AND WALL
- (N) 4'-0" WIDE x 8'-0" HIGH STEEL PICKET GATE
- (N) LOCATION FOR ELECTRICAL METER
- PROPOSED TEMPORARY VERIZON EQUIPMENT ON A CONCRETE BASE WITH A 62'-0" MONOPOLE (NOT SHOWN). SEE SHEETS A6 - A12.



(N) PERMANENT WEST ELEVATION

SCALE: 1/8" = 1'-0"

PERMANENT SITE
(N) VERIZON 8'-0" TALL CONCRETE BLOCK EQUIPMENT ENCLOSURE WITH 6 GAUGE INDUSTRIAL COMMERCIAL CHAIN LINK LID WITH 2" MESH OPENING



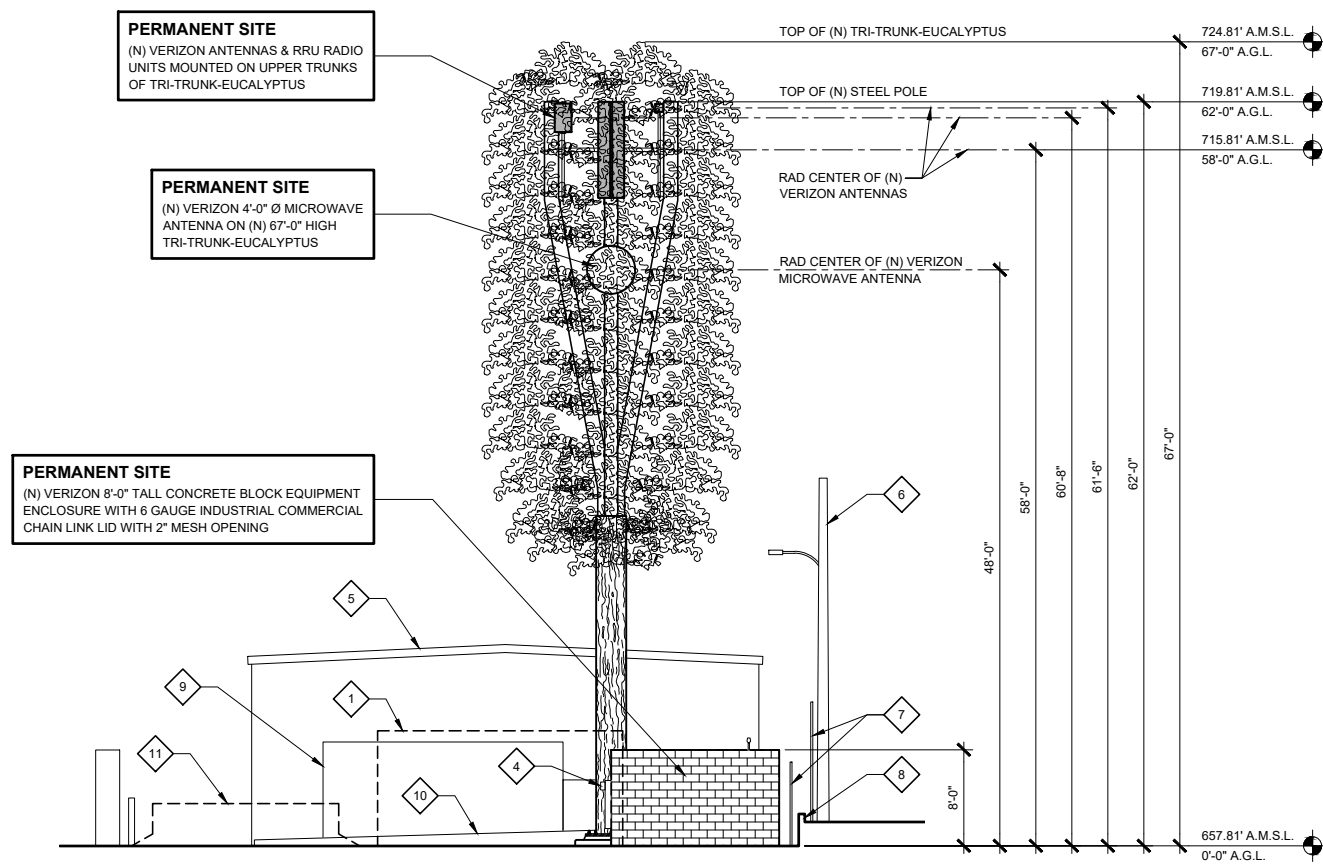
(E) SOUTH ELEVATION
SCALE: 1/8" = 1'-0"

ANTENNA & EQUIPMENT CAMOUFLAGE NOTES:

1. COMMSCOPE NHH-65C-R2B AND ERICSSON KRE 105281/1 ANTENNAS MAY BE COVERED BY RF TRANSPARENT NEEDLE SOCKS. 11
D1
2. RRU 4449 & 8843 UNITS MAY BE COVERED BY RF TRANSPARENT NEEDLE SOCKS. BUT, MAY NOT BE PAINTED. 11
D1
3. RAYCAP SURGE SUPPRESSORS MAY BE PAINTED TO MATCH DOMINANT COLOR OF TREE FOLIAGE.
4. ERICSSON AIR6449 ANTENNAS MAY ONLY BE COVERED WITH 3M FILM IN A COLOR THAT MATCHES THE DOMINANT TREE COLOR. ONLY THE FACE AND SIDES MAY RECEIVE FILM. THE BACK OF THESE ANTENNAS MAY NOT BE COVERED, FILMED OR PAINTED.
5. ALL EXPOSED CABLES, BRACKETS & SUPPORTS SHALL BE PAINTED TO MATCH FAUX TREE FOLIAGE.

KEYED NOTES:

- 1 REMOVE (E) VERIZON EQUIPMENT BUILDING INCLUDING ALL INTERIOR EQUIPMENT, CONCRETE FOUNDATIONS, PADS & LANDINGS
- 2 REMOVE (E) VERIZON 62'-0" HIGH WOOD POLE WITH ANTENNAS, RRUS, MOUNTING BRACKETS & CABLES
- 3 REMOVE (E) VERIZON CHAIN LINK FENCE ENCLOSURE AROUND WOOD POLE AND PARTIAL CHAIN LINK FENCE ON SOUTHEAST CORNER OF PROPERTY
- 4 (N) LOCATION FOR PERMANENT ELECTRICAL METER
- 5 (E) BUILDING
- 6 (E) LIGHT STANDARD TO REMAIN
- 7 (E) CHAIN LINK FENCE WITH BARBED WIRE TO REMAIN
- 8 (E) CONCRETE BLOCK WALL
- 9 (E) COMMERCIAL TRASH COMPACTOR
- 10 (E) CONCRETE LOADING PAD AND WALL
- 11 PROPOSED TEMPORARY VERIZON EQUIPMENT ON A CONCRETE BALLASTED BASE WITH A 62'-0" MONOPOLE (NOT SHOWN). SEE SHEETS A6 - A12.



(N) PERMANENT SOUTH ELEVATION
SCALE: 1/8" = 1'-0"

ISSUE STATUS

REV.	DATE	DESCRIPTION	BY
0	02/28/2023	90% ZD REVIEW	RL
1	06/02/2023	90% ZD DRM COMMENTS	RL
2	06/26/2023	100% ZD	RL
3	11/06/2032	ENCL. SIZE INCREASE	RL
4	12/18/2023	REVISED 90% ZD	RL
5	01/10/2024	100% ZD	RL
6	08/16/2024	CITY STAFF COMMENTS	RL
7	10/21/2024	COMBINED PERM & TEMP	RL

PLANCOM
TELECOMMUNICATIONS PROJECT MANAGEMENT

16776 BERNARDO CENTER DRIVE, UNIT 203
SAN DIEGO, CA 92128

PROPRIETARY INFORMATION

THE INFORMATION CONTAINED IN THIS SET OF DRAWINGS IS PROPRIETARY & CONFIDENTIAL TO VERIZON

verizon
15505 SAND CANYON AVENUE
BUILDING C
IRVINE, CA 92618

TEMESCANYON

PROJECT I.D. : 17276944
1660 LEESON LANE
CORONA, CA 92879

SHEET TITLE:
PERMANENT
EXTERIOR ELEVATIONS

A-5

COMMSCOPE NHH-65C-R2B
 DIMENSIONS, HxWxD: 96" x 11.9" x 7.1"
 WEIGHT: 51.6 lbs
 RF CONNECTORS: (6) 7-16 DIN FEMALE / BOTTOM

NOTE: SEE CAMOUFLAGE NOTES ON DETAIL "11/D-1"

FRONT VIEW SIDE VIEW BOTTOM VIEW

KRE105281/1 ANTENNA WITH INTEGRAL 4408 B48 DC RRU RADIO UNIT
 CAPACITY AND SPECIFICATIONS
 - 4TX / 4RX - 6 LTE CARRIERS
 - UP TO 4x5W - 2x 10.1Gbps CPRI
 - 120MHz IBW

OTHER SPECIFICATIONS
 - AC or -48 VDC - 2 external alarm
 - Integrated or external antenna - IP 65, -40 to +55°C

HEIGHT	WIDTH	DEPTH	WEIGHT
8.38 in. (213 mm)	7.87 in. (200 mm)	4.92 in. (125 mm)	11.02 lbs. (5 Kg)

NOTE: SEE CAMOUFLAGE NOTES ON DETAIL "11/D-1"

FRONT VIEW SIDE VIEW BOTTOM VIEW

CAUTION BATTERIES IN CABINETS

BATTERY ELECTROLYTE SOLUTIONS ARE CORROSIVE LIQUIDS
 THIS AREA CONTAINS:
 ENERGIZED BATTERY SYSTEMS AND
 ENERGIZED ELECTRICAL CIRCUITS

MICARTA SIGN RED BACKGROUND WITH WHITE LETTERS
 1" HELVETICA LETTERING
 1/2" HELVETICA LETTERING
 MOUNTING SCREWS

NOTE: GENERAL CONTRACTOR SHALL CONFIRM SPECIFIC SIGNAGE AND LOCATION WITH THE RFE / EME STUDY AND THE VERIZON WIRELESS CONSTRUCTION MANAGER

NFPA 704 PLACARDS

FOR GENERATOR
 1 (HEALTH HAZARD) 2 (FLAMMABILITY) 0 (REACTIVITY)
 BLUE (HEALTH HAZARD) WHITE (SPECIAL) NUMBERS & LETTERS SHALL BE REFLECTIVE

FOR BATTERIES
 3 (HEALTH HAZARD) 0 (FLAMMABILITY) 2 (REACTIVITY)
 BLUE (HEALTH HAZARD) WHITE (SPECIAL) NUMBERS & LETTERS SHALL BE REFLECTIVE

NOTE: GENERAL CONTRACTOR SHALL CONFIRM SPECIFIC SIGNAGE AND LOCATION WITH THE RFE / EME STUDY AND THE VERIZON WIRELESS CONSTRUCTION MANAGER

ANTENNA SPECIFICATIONS SCALE: N.T.S. 1

ANTENNA WITH 4408 RRU RADIO UNIT SCALE: N.T.S. 2

BATTERY CAUTION SIGN SCALE: N.T.S. 3

NFPA 704 PLACARDS SCALE: N.T.S. 4

ERICSSON AIR 6419
 DIMENSIONS, HxWxD: 31.3" x 16.1" x 9.8"
 WEIGHT: 63.05 lbs

NOTE: SEE CAMOUFLAGE NOTES ON DETAIL "11/D-1"

PLAN VIEW FRONT VIEW SIDE VIEW

SURGE SUPPRESSOR MOUNTING

(N) 2"Ø x 3'-0" LONG SCHEDULE 40 GALVANIZED STANDARD (ASTM 53 GRADE B) STEEL PIPE MOUNT
 (N) SURGE SUPPRESSOR DISTRIBUTION BOX SEE DETAIL
 (N) 3/8" GALVANIZED STEEL MOUNTING PLATE WITH (2) 1/2"Ø A36 GALVANIZED U-BOLTS
 (N) TRI-TRUNK-EUCALYPTUS SUPPORT ARM
 (N) (4) 3/8"Ø GALVANIZED FASTENERS FOR MOUNTING FRAME TO DISTRIBUTION BOX
 (N) UNISTRUT P1000T x 16" LONG (TYPICAL) W/ (2) 3/8"Ø A-36 GALVANIZED U-BOLTS TO 2"Ø PIPE MOUNT
 (N) STAINLESS STEEL MOUNTING FRAME PROVIDED WITH UNIT INSTALLED PER MANUFACTURERS SPECIFICATIONS
 (N) (2) 3/8"Ø GALVANIZED UNISTRUT BOLTS & SPRING NUTS

SIDE VIEW

ANTENNA & EQUIPMENT CAMOUFLAGE NOTES:

- COMMSCOPE NHH-65C-R2B AND ERICSSON KRE 105281/1 ANTENNAS MAY BE COVERED BY RF TRANSPARENT NEEDLE SOCKS.
- RRU 4449 & 8843 UNITS MAY BE COVERED BY RF TRANSPARENT NEEDLE SOCKS. BUT, MAY NOT BE PAINTED.
- RAYCAP SURGE SUPPRESSORS MAY BE PAINTED TO MATCH DOMINANT COLOR OF TREE FOLIAGE.
- ERICSSON AIR6449 ANTENNAS MAY ONLY BE COVERED WITH 3M FILM IN A COLOR THAT MATCHES THE DOMINANT TREE COLOR. ONLY THE FACE AND SIDES MAY RECEIVE FILM. THE BACK OF THESE ANTENNAS MAY NOT BE COVERED, FILMED OR PAINTED.
- ALL EXPOSED CABLES, BRACKETS & SUPPORTS SHALL BE PAINTED TO MATCH FAUX TREE FOLIAGE.

RADIO 4490
 4 COMMON RF PORTS (C)
 B5: 4X60W, B13: 4X60W
 480 W TOTAL RF OUTPUT POWER
 L, NR, NB-IoT
 2x 2.5/4.9/9.8/10.1/24.3 Gbps CPRI/eCPRI

HEIGHT	WIDTH	DEPTH	WEIGHT
20.6 in. (522 mm)	15.7 in. (397 mm)	7.0 in. (178 mm)	68.4 lbs. (31.0 Kg)

-48 VDC 2-WIRE (ONE DC CONNECTOR INPUT)
 AISG V3.0 TMA & RET SUPPORT VIA RS-485 OR RF CONNECTORS
 TYPE 4.3-10 RF + CONNECTORS
 2 EXTERNAL ALARMS
 CONVECTIONAL COOLING
 OPTIONAL FAN FOR INCREASED SITE FLEXIBILITY
 IP 65, -40 TO +55 °C

TOP VIEW FRONT VIEW SIDE VIEW

ANTENNA SPECIFICATIONS SCALE: NONE 5

SURGE SUPPRESSOR MOUNTING SCALE: N.T.S. 6

ANTENNA & RRU MOUNTING SCALE: N.T.S. 11

RRU 4490 SPECIFICATIONS SCALE: N.T.S. 8

RAYCAP SURGE SUPPRESSOR
 RAYCAP RCMDC-4750-PF-48
 WEIGHT: 21.5 LBS.

RAYCAP RCMDC-3315-PF-48 WITH SURGE SUPPRESSOR
 WEIGHT: 26.9 LBS.

NOTE: SEE CAMOUFLAGE NOTES ON DETAIL "11/D-1"

FRONT VIEW SIDE VIEW BOTTOM VIEW

SERVICE LIGHT

LIGHT FIXTURE FULLY SHIELDED
 4 1/4" x 2 5/8" x 2 3/4"
 1 3/16" x 4 11/16"
 KNUCKLE MOUNT TO 4" x 4" x 2" JUNCTION BOX ANCHORED TO WALL
 CONDUIT

RAB LIGHTING: X34-16L/120 LED FLOOD LAMP 1632 LUMENS

NOTE: LIGHT FIXTURES SHALL BE ADJUSTED SO THAT ALL LIGHTING IS CONTAINED WITHIN THE BOUNDARIES OF THE SITE

ANTENNA & RRU MOUNTING

(N) ANTENNA. SEE DETAIL (1, 2, 5) (D1, D1, D1)
 (N) 2"Ø SCHEDULE 40 GALVANIZED STANDARD (ASTM 53 GRADE B) STEEL ANTENNA PIPE MOUNT
 (N) ANTENNA BRACKET
 (N) SURGE SUPPRESSOR DISTRIBUTION BOX SEE DETAIL (9) (D1)
 (N) (4) 3/8"Ø GALVANIZED FASTENERS FOR MOUNTING FRAME TO DISTRIBUTION BOX
 (N) STAINLESS STEEL MOUNTING FRAME PROVIDED WITH UNIT INSTALLED PER MANUFACTURERS SPECIFICATIONS
 (N) (2) 3/8"Ø GALVANIZED UNISTRUT BOLTS & SPRING NUTS
 (N) TRI-TRUNK-EUCALYPTUS SUPPORT ARM
 (N) 3/8" THICK STEEL PLATE & 1/2"Ø U-BOLTS
 (N) TRI-TRUNK-EUCALYPTUS CROSS & SUPPORT ARM ASSEMBLY
 (N) RRU UNITS MOUNTED TO SEPERATE PIPE MOUNTS. SEE DETAIL (8, 12) (D1, D1)
 (N) COMMSCOPE ANTENNA BRACKET
 (N) COAXIAL CABLE JUMPER
 (N) FAUX FOLIAGE SOCK COVER AROUND ALL ANTENNAS & RRU UNITS
 (2) RRU PER SECTOR

RADIO 4890
 8 RF PORTS, 4T8R PER BAND (5 FOR TX)
 B2: 4X60W
 B66: 4X60W
 UP TO 480W IN TOTAL RF POWER
 L, NR, NB-IoT
 2x 2.5/4.9/9.8/10.1/24.3 Gbps CPRI/eCPRI

HEIGHT	WIDTH	DEPTH	WEIGHT
20.6 in. (522 mm)	15.7 in. (397 mm)	7.2 in. (182 mm)	69.5 lbs. (31.5 Kg)

-48 VDC 2-WIRE (SINGLE DC-CONNECTOR),
 AISG V3.0 TMA & RET SUPPORT VIA RS-485 OR RF CONNECTORS
 TYPE 4.3-10 RF + CONNECTORS
 2 EXTERNAL ALARMS
 CONVECTIONAL COOLING
 OPTIONAL FAN FOR INCREASED SITE FLEXIBILITY
 IP 65, -40 TO +55 °C

TOP VIEW FRONT VIEW SIDE VIEW

SURGE SUPPRESSOR SPECIFICATIONS SCALE: N.T.S. 9

SERVICE LIGHT SCALE: N.T.S. 10

ANTENNA & RRU MOUNTING SCALE: N.T.S. 11

RADIO 4890 SPECIFICATIONS SCALE: N.T.S. 12

ISSUE STATUS

REV.	DATE	DESCRIPTION	BY
0	02/28/2023	90% ZD REVIEW	RL
1	06/02/2023	90% ZD DRM COMMENTS	RL
2	06/26/2023	100% ZD	RL
3	11/06/2023	ENCL. SIZE INCREASE	RL
4	12/18/2023	REVISED 90% ZD	RL
5	01/10/2024	100% ZD	RL
6	08/16/2024	CITY STAFF COMMENTS	RL
7	10/21/2024	COMBINED PERM & TEMP	RL

PLANCOM
 TELECOMMUNICATIONS PROJECT MANAGEMENT
 16776 BERNARDO CENTER DRIVE, UNIT 203
 SAN DIEGO, CA 92128

PROPRIETARY INFORMATION
 THE INFORMATION CONTAINED IN THIS SET OF DRAWINGS IS PROPRIETARY & CONFIDENTIAL TO VERIZON

verizon
 15505 SAND CANYON AVENUE
 BUILDING C
 IRVINE, CA 92618

TEMESCANYON
 PROJECT I.D. : 17276944
 1660 LEESON LANE
 CORONA, CA 92879

SHEET TITLE:
 DETAILS
D-1