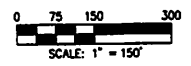


NUMBERED LOTS: 45
LETTERED LOTS: 32
ACREAGE IN NUMBERED LOTS: 34.498 AC.
ACREAGE IN LETTERED LOTS: 16.635 AC.
TOTAL ACREAGE: 51.133 AC.

IN THE CITY OF CORONA, COUNTY OF RIVERSIDE, STATE OF CALIFORNIA
TRACT NO. 37644

BEING A SUBDIVISION OF LOTS 9 AND V OF TRACT MAP NO. 36294, FILED IN BOOK 456, PAGES 23 THROUGH 38, INCLUSIVE, OF MAPS, RECORDS OF RIVERSIDE COUNTY, STATE OF CALIFORNIA

HUNSAKER AND ASSOCIATES, INC. AUGUST, SEPTEMBER & NOVEMBER, 2015.
FOR CONDOMINIUM PURPOSES



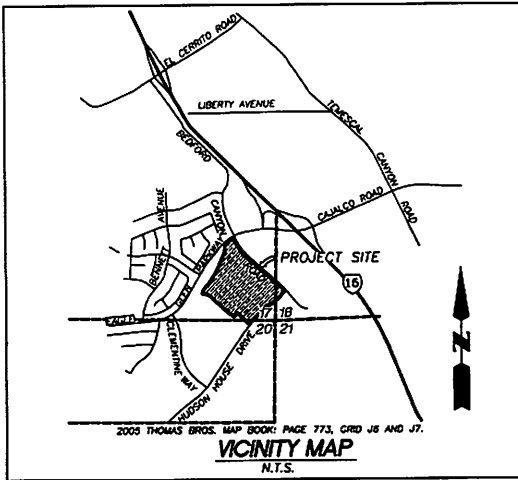
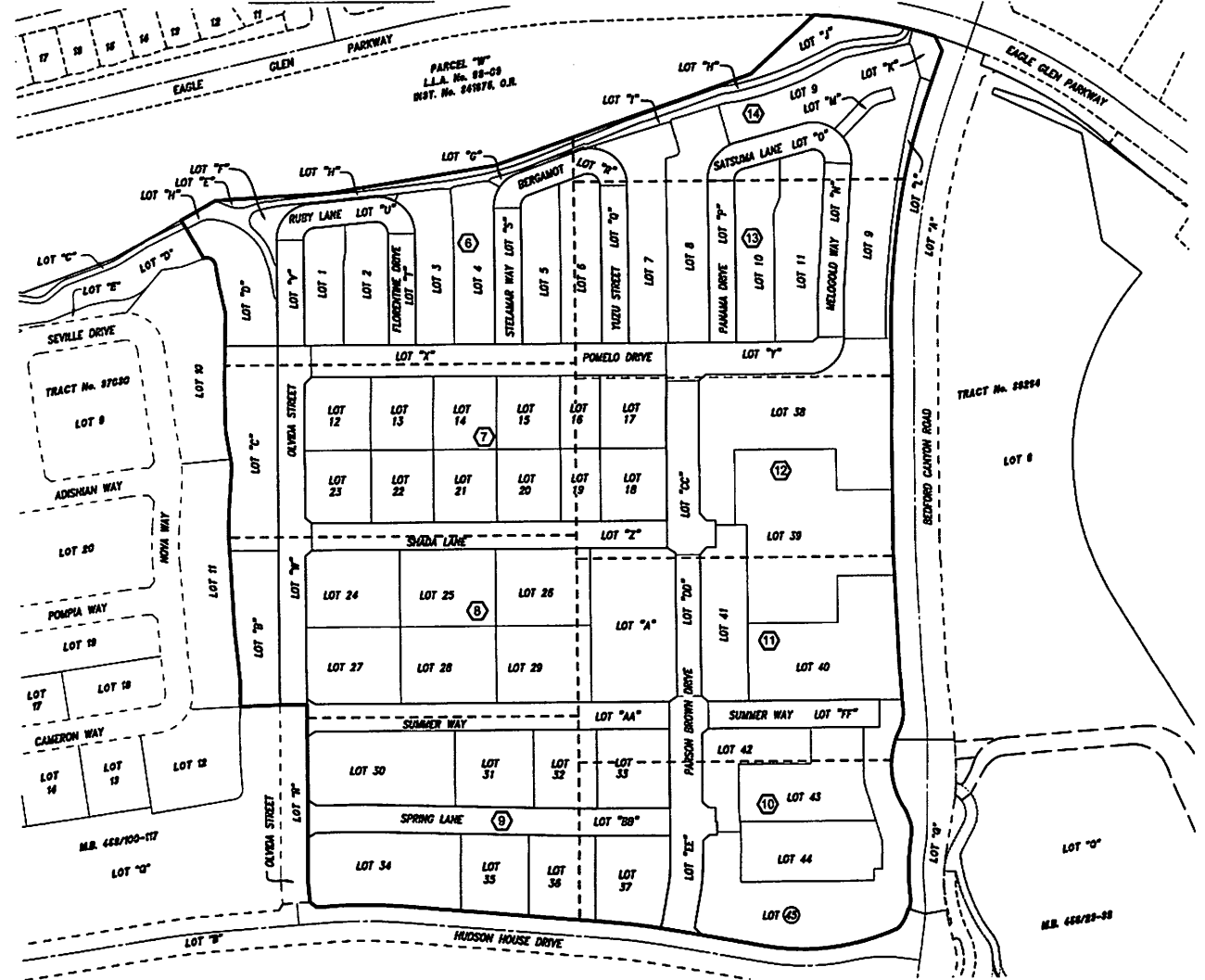
SHEET INDEX

- ① INDICATES SHEET NUMBER
- INDICATES SHEET BOUNDARY

EASEMENT NOTES

- ① A STORM DRAIN EASEMENT AS SHOWN AND DEDICATED ON TRACT 36294, RECORDED JULY 13, 2017, IN MAP BOOKS 456 PAGES 23 - 38, VACATED HEREON.
- ② A DRAINAGE EASEMENT AS SHOWN AND DEDICATED ON TRACT 36294, RECORDED JULY 13, 2017, IN MAP BOOKS 456 PAGES 23 - 38, VACATED HEREON.
- ③ AN EASEMENT IN FAVOR OF SOUTHERN CALIFORNIA EDISON RECORDED JANUARY 17, 2016, AS INSTRUMENT NO. 2016-0018491 OF OFFICIAL RECORDS OF RIVERSIDE COUNTY.
- ④ AN EASEMENT FOR PUBLIC WATER, RECLAIMED WATER, SEWER, STREET LIGHT, DRAINAGE, AND PUBLIC UTILITY PURPOSES TOGETHER WITH THE RIGHT OF INGRESS AND EGRESS FOR SERVICE AND EMERGENCY VEHICLES AS SHOWN AND DEDICATED HEREON.
- ⑤ AN EASEMENT FOR PUBLIC UTILITY PURPOSES AS SHOWN AND DEDICATED HEREON.
- ⑥ A DRAINAGE EASEMENT, AS SHOWN AND DEDICATED TO THE PUBLIC HEREON.
- ⑦ A TRAIL EASEMENT FOR PUBLIC USE, AS SHOWN AND DEDICATED HEREON.
- ⑧ AN EASEMENT FOR PUBLIC SEWER PURPOSES AS SHOWN AND DEDICATED HEREON.
- ⑨ A STORM DRAIN EASEMENT, AS SHOWN AND DEDICATED TO THE PUBLIC HEREON.
- ⑩ AN EASEMENT FOR PUBLIC WATER PURPOSES SHOWN AND DEDICATED HEREON.

SHEET INDEX MAP



NOTES:

- SEE SHEET 2 FOR NOTARY ACKNOWLEDGMENTS.
- SEE SHEET 3 FOR BOUNDARY INFORMATION AND SURVEYOR'S NOTES.
- SEE SHEET 4 FOR ADDITIONAL BOUNDARY DETAIL, INFORMATION, BASIS OF BEARING AND DATUM STATEMENT.
- SEE SHEET 6 THROUGH 14, INCLUSIVE, FOR LOT MAPS.